

# **The Best Damn Linux Presentation Ever !!!**

Do you want the truth ???

Can you handle the truth ???

**Steve Winfield**

**National Technology Strategist**

Partner Technology Team (a.k.a. Delta Force)

US Partner Group, Microsoft

**Plaintiff's Exhibit**

**9346**

**Comes V. Microsoft**

1

## Why Customers Choose Linux

- They were already a Unix shop
- It was recommended to them
  - By another vendor
  - By someone on team fresh out of college
- Can't afford to upgrade their hardware
- It's Cheaper (not necessarily)
- They run a very narrow list of applications
- It's more secure
- Apps are easier to pirate
- It's not Microsoft

**“I love Linux !!!”**

Uhhh, what exactly do you mean by “Linux”?

## Major Players

- RedHat
- Suse
- Lindows

## Minor Players

2-Disk Xwindow Linux    Alphalinux    ALT Linux    Arch Linux    Ark Linux  
Armed Linux    ASPLinux    Astaro Security Linux    BasicLinux  
BearOps Linux    Beehive Linux    Blue Linux    BluePoint Linux  
Bootable Business Card    BRD    ByzantineOS    CAEN Linux    CCLinux  
ChainSaw Linux    ClarkConnect    CLE (Chinese Linux Extensions)  
cLleNux    CollegeLinux    Compledge Sentinel    Conectiva Linux  
Coollinux    Core Linux    Corel Linux    Coyote Linux    CRUX    Emblin  
Damn Small Linux    Debian    GNU/Linux    deepGNU/Linux    DemoLinux  
Dettu[Xx] Linux    Devil-Linux    DLX    Linux    DragonLinux    easyLinux  
Eiffstone Linux    ELInOS    ELKS    Eix Linux    EnGarde Secure Linux

## Minor Players ... 198 total

ESWare Etlinux Eurielec Linux Finnix FireCast Software Suite for Kiosks Firegate Server  
 FI4L floppyfw FrazierWall Linux Freesco GamelinuX GCL- Grey Cat Linux  
 Gelecek Linux Gentoo Linux Gibraltar glotto GNU Brutalware Linux GNU Dualix GNU/Linux  
 UTUTO hai91 Floppy Linux Haydar Linux HlspeFuentes Honung Linux HRID HVLinux  
 Icepack Linux Immunix OS Independence IPCop Firewall Ivrix JAILBAIT JB Linux  
 Jurix Linux K12LTSP Kaladix Linux Keeper Linux KNOPPIX Kondara MNU/Linux  
 KRUD (Kevin's RedHat Über Distribution) KSI Linux L13Plus Lanthan Linux Laser5 Leka  
 Rescue Floppy LindowsOS LinEx Linpus Linux Linux Antarctica Linux by Libranet Linux Pro  
 LinuxInstall.org LinuxOne LinuxROM (aka PizzaBox distro) LinuxWare LOAF (Linux on a floppy)  
 LoopLinux Lunatix GNU/Linux LuteLinux Lycoris Madeinlinux MandrakeLinux Maragda  
 Mastodon Linux MaxOS MCC Miracle Linux MNIS/RTLlinux and MNIS/SXLinux  
 Monkey Linux Morphix muLinux Netule Modules NFSRoot-Linux NoMad Linux  
 Nuclinux O-Net Peanut Linux PeeWeeLinux Phat Linux PKLinux Plamo Linux  
 PLD Linux Pocket Linux Probatas Spectra Linux Progeny Debian PROSA Debian Puppy  
 Pygmy Linux Rabid Squirrel Linux Red Flag Linux RedHat Linux Relax Linux Rock Linux  
 Root Linux Routerlinux RT-Linux SCO/Caldera OpenLinux ScrudgeWare Security-Enhanced Linux  
 SharkLinux Slackware Linux Small Linux SME Server smoothwall Server Optimized Linux  
 Sol-diaq Sorcerer Linux SOT Linux Source Mage GNU/Linux SPB-Linux Spink spyLinux  
 Stampede Linux Storm Linux SuSE Linux TelemetryBox The LNX System TINY Linux  
 tomsrtbt Tomukas TopologLinux Trinux Trustix Secure Linux Trustix/Merdeka Linux  
 ttylinux TurboLinux University Linux Ute-Linux VectorLinux Vine Linux Virtual-Linux  
 White Glove Linux WholeLinux WinLinux 2001 Xandros Xbox Linux Xdenu Xteam  
 Linux YES Server Yggdrasil Linux Yoper YuO-GNU-Linux ZIF Linux ZipHam ZipSpeak

Which Linux? 198 different versions according to [www.linux.org](http://www.linux.org), of course, only 166 of these are still maintained!!! This is for Intel platform only!!!

But what if I only plan to use Red Hat? Only 25 different varieties based on Red Hat!!!

## What about mail? ... 70 choices

aliasman.pl    Bluetail Mail Robustifier    Checklocalpwd  
 CommuniGate Pro    Courier    Courier-IMAP    cucipop  
 Cyrus IMAP server    cyrus-imapd-sql    cyrus-sasl-mysql patch  
 DixieMail    dkimap    eSquire    Exim    Ezmlm    ezmlm-idx    getpg/  
 UW-IMAP    GNU Anubis    GNU pop3d with NIS    InfinyMail    Inflex  
 IntraStore Server 98    JAMS    JergoBlatz!    Mail-Gear  
 maildir-bulletin    Mailman    MailOne    MasqMail    Minimalist  
 Minordomo    MXM    Netscape Messaging Server    nullmailer  
 ODBCmap OMTA    pam\_cucipop    perdition    popa3d    poplister  
 Postfix pwcheck\_mysql    pwcheck\_pgsql    qmailHdap    qmail\_regex  
 qmfilt Qpopper    qpopper-mysql    RMTTP    SAUCE    Sendmail  
 Sendmail PostgreSQL map patch    sendmail-tls    smunge    Solid POP3  
 Squirrel Mail    teapop    trlm    Transparent compression for Qmail  
 UW Imap Server    UW-IMAP/Linuxconf VDM    vmail-sql  
 virtual domains support for GNU pop3d    vmailmgr    VoidPOP3  
 vpopmail    Webinterface for Unix    Listproc    XMail    ZMailer

Mail server? Choose between 70!!!

## And Office? ... 48 choices

Abacus    AbiWord    BlackBook    Bynari    TradeMail  
Chinese Lyx    Patch Conflux Lite    CyberScheduler  
envi.con    R. Heuberger    Form Maker    GCTB  
GMCAL    Gstalker    IndeoCRM    jpilot    KFlowChart  
Lexi Word Processor    LinuDent    logger    LyX  
MagicPoint    MagicPoint Gallery    ManStyle    Maxwell  
Muller English-Russian Dictionary Kit    OmniChex  
OpenOffice.org    Passepartout    PSSlides    QtGantt  
QuickList    Share360 by Cybozu    Siag Office  
Slidemaker    SohoVoice    SoL-desktop    sqlDESKTOP  
StarOffice    Storageement    Ted    Uniplex    UBS  
VetTux    XC Connect    XC Vault    XESS    xmemo  
XNotesPlus    xrolo    XRolyPoly

Want Office? Only 48 different options.

## So which Linux solution ?

- 665,280 different possible combinations just looking at three of the most basic parts of IT !!!
  
- And we have not even looked at the following:
  - 131 different Firewalls
  - 55 different DNS servers
  - 15 different Collaboration offerings
  
- 14,092,426,656,000 ... That is 14 trillion options !!!
  
- Not my data...searches on [www.linux.org](http://www.linux.org) on 9/7/03

E-mail client? 196 versions.

Firewalls? 131 versions.

DNS? 55 versions.

Collaboration? 15 versions



**“Linux is free.”**

Yep, just like a puppy.

## Red Hat

- **Red Hat Linux Enterprise AS**
  - **\$1499 Standard Edition**
  - **\$2499 Premium Edition**
- **Red Hat Linux ES**
  - **\$349 Basic**
  - **\$799 Standard**
- **Red Hat Linux Enterprise WS**
  - **\$179 Basic Edition**
  - **\$299 Standard Edition**

## SuSE Linux Enterprise Server

- SuSE Enterprise Server = \$749
  - 1 year of on-line/e-mail support = included
  - 1 year of phone support = \$2250
  - About 5 years of patch support
- Desktop = \$79.95
  - 90 days install support
  - About 2 years of patch support
- Office = \$129
  - Allows use of Office 97/2000

## SCO

- SCO pricing
  - \$199 per desktop
  - \$699 per server (\$1399 after Oct 15th)
  - (\$1B lawsuit against IBM)

## How IBM Makes Money

- IBM makes money 'indirectly'
  - Hardware, services, "middleware"
- The total cost is much higher
- There are no incentives for IBM to:
  - Guide customers to cost-effective hardware
  - Make Linux simpler to deploy, use & manage
  - Include middleware with Linux distributions

# IBM Supports WebSphere On Linux

**Microsoft**

Windows Server 2003 Enterprise (6)	\$15,996
Windows Server 2003 Standard (2)	\$1,998
SQL Server 2000 Standard	\$19,996
Host Integration Server	\$9,996
Visual Studio 2003 EA	\$21,990
<b>Total Software</b>	<b>\$69,976</b>

**IBM**<sup>®</sup>

Linux	\$0
WebSphere App. Server v5.0	\$48,000
DB2 v8.1	\$18,000
CICS Transaction Gateway	\$29,252
WebSphere App. Developer	\$34,990
<b>Total Software</b>	<b>\$130,242</b>

### Basic Software Configuration

Six 2-CPU servers: 2 application servers, 2 database servers, 2 host gateway servers

## Gartner Comparison Chart Desktop

	HW	SW	HW&SW	End User	Total TCO
95/Office	481	871	1423	3242	6050
XP/Office	481	871	1423	2706	5285
XP/SO	481	797	1348	2896	5402
Linux/SO	445	785	1311	2986	5447

## Perception – It's Free

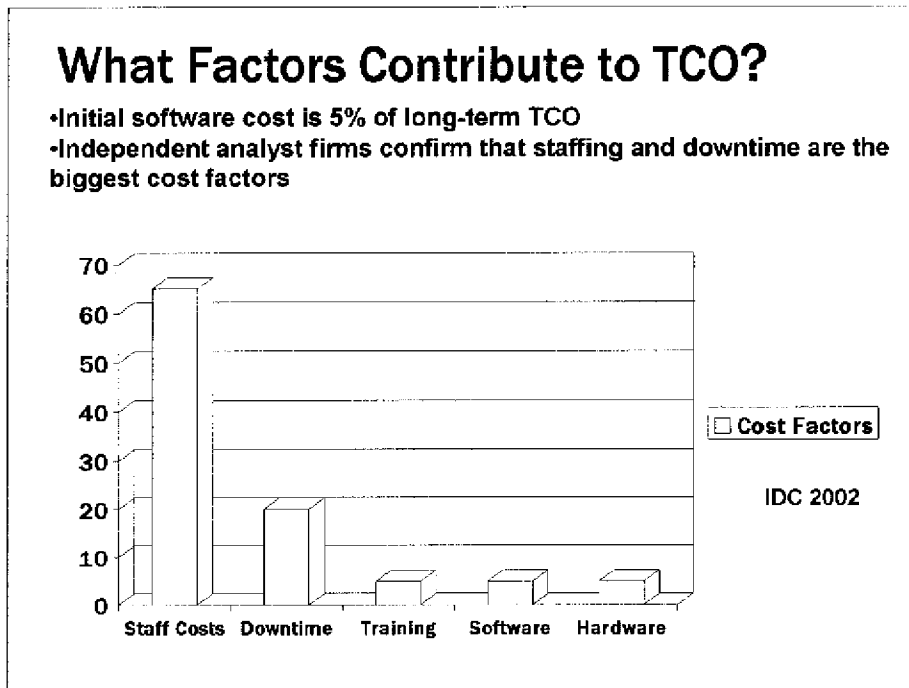
- Red Hat made \$91 million last year
  - (\$291 million in the bank)
- Gartner estimates that IBM can trace to Linux about \$1.2 billion in revenue in 2002 (hardware, software and services)

[http://news.com.com/2100-1001\\_3-5060134.html?tag=fd\\_top](http://news.com.com/2100-1001_3-5060134.html?tag=fd_top)



**“Well, it may not be free,  
but it’s cheaper...”**

Not really.



Based on independent research from Gartner, Meta and now IDC, most analysts agree that upfront software acquisition costs are only a tiny portion of the long-term total cost of ownership. Staff costs plus the cost of downtime are the two biggest sources of expense involved in owning and operating an IT infrastructure.

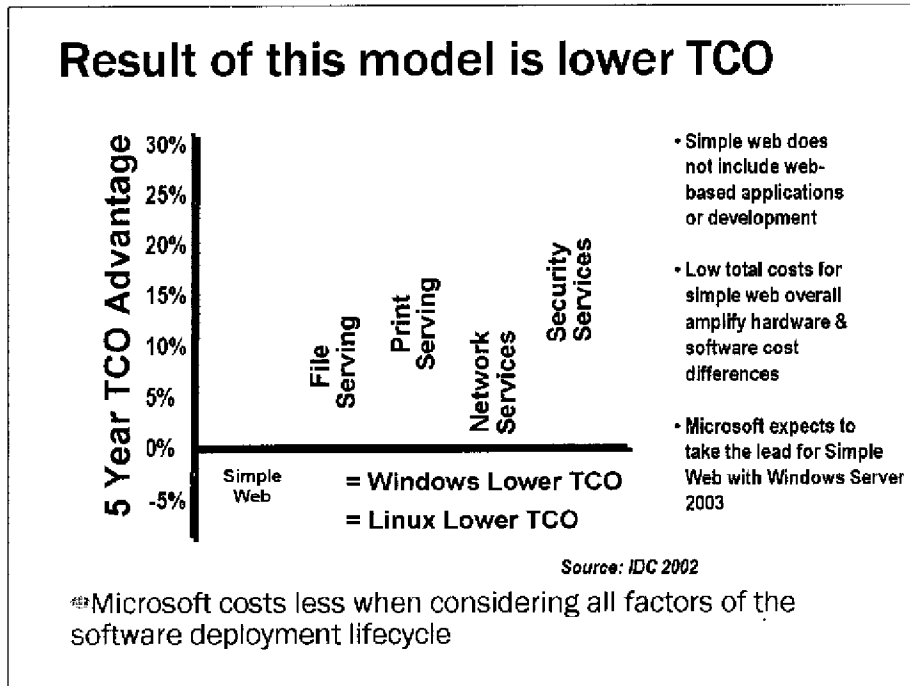
IDC's TCO study confirmed these cost factors, discovering that based on over 100 customer interviews, staff costs associated with installing, upgrading and troubleshooting server operating systems tended to be the largest cost component. Compare that to software acquisition costs of Windows, which were only 5% of most server operating solutions. Unfront "free" does not mean low-cost in the long term.

# Cost: The Facts

“The cost advantages of  
Windows are significant:  
11 to 22% over a 5 year period”



\*Source: IDC Whitepaper, October 2002 "Windows 2000 versus Linux in Enterprise Computing"



The result of the efforts Microsoft puts into solving customer pain, the approach to development, integration and test and the focus on a broad ecosystem is lower TCO and higher business value for you. When asked why customers are interested in Linux, the most popular response is 'low cost'. In fact, many customers report that their intuition says that Linux will be 2-3 times cheaper than Windows. Why? It seems intuitive that an operating system that is free would also cost less over the long term to maintain and operate.

Microsoft has long felt, however, that there are many factors (such as 'people costs') that would be lower for Windows, and that over time, Windows would actually cost less than Linux. In order to test this belief, and show that our investments in engineering would deliver a lower long-term cost profile, Microsoft commissioned an in-depth study with International Data Corporation to study the 5 year total cost of ownership of Windows versus Linux in 5 common workloads.

What the study found was that initial software acquisition costs are a very small percentage of the 5 year TCO, and that the #1 factor is 'People costs'. And, the study found that Windows has a lower TCO than Linux in all but the Web serving workload. In fact, the savings in some of the workloads – especially security servers and print serving – were surprisingly high. [Note: The web workload does not include application-centric web deployments; people costs were still lower for Windows in the web workload; the low cost profile overall for the web workload amplified the software acquisition cost differences and the fact that most customers run Linux web servers on less expensive hardware than Windows web servers (a situation that we expect to change with IIS 6.0, which will operate more efficiently than IIS 5.0).

It is also important to note that we're not stating that TCO is the only factor that companies should use when making operating system platform decisions. Instead, we are asserting that this data shows that the investments we make in rigorous engineering and investing in ecosystem development have yielded returns for customers. In other words, lower TCO doesn't happen by accident. And we encourage customers to question their assumptions about whether low up-front costs in additional workloads (that we didn't study) will translate automatically to lower costs over time. We strongly expect that Windows' TCO advantage grows along with the complexity of the workload.

Look at the <http://Linux> site, where the IDC study is posted, to find additional 3<sup>rd</sup> party TCO data that corroborates the data found in the IDC study.

Notes:

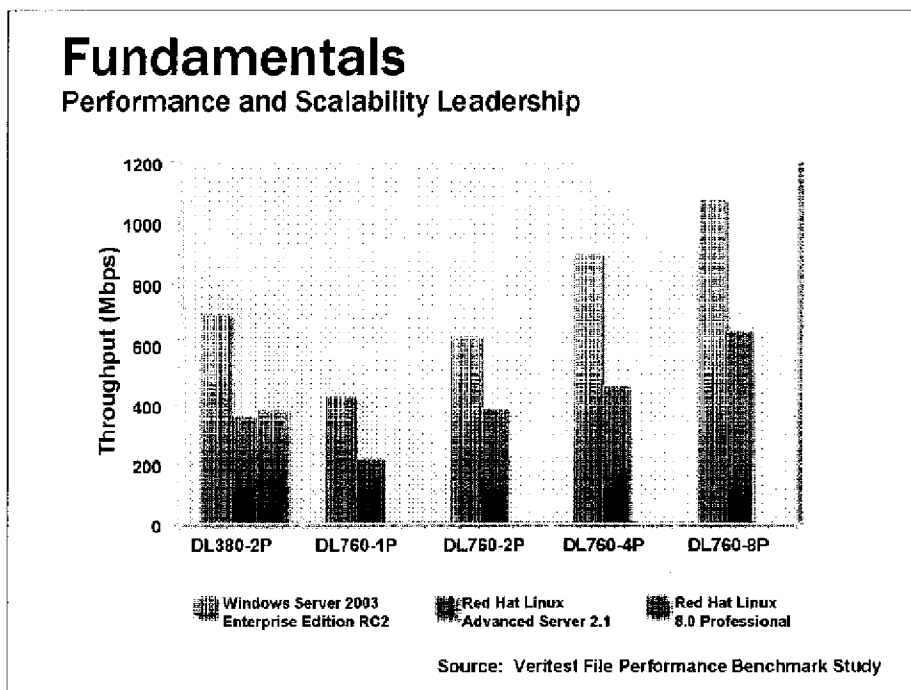
-In the case of the web workload, it is important to note that this category covered only basic web serving (static content and basic dynamic content) and that Windows had a lower 'people cost' but hardware costs were higher on Windows than on Linux due to the way that most customers deployed their Linux servers in clusters of very low-end, inexpensive machines. Windows-based web servers tended to not be deployed in clusters and also tended to run more workloads per server, which generally translated to larger, more expensive machines. (Note that because of the advances in IIS Version 6.0, that ships in Windows.NET Server 2003, Microsoft expects that we will come out ahead on the simple web workload in the future.)

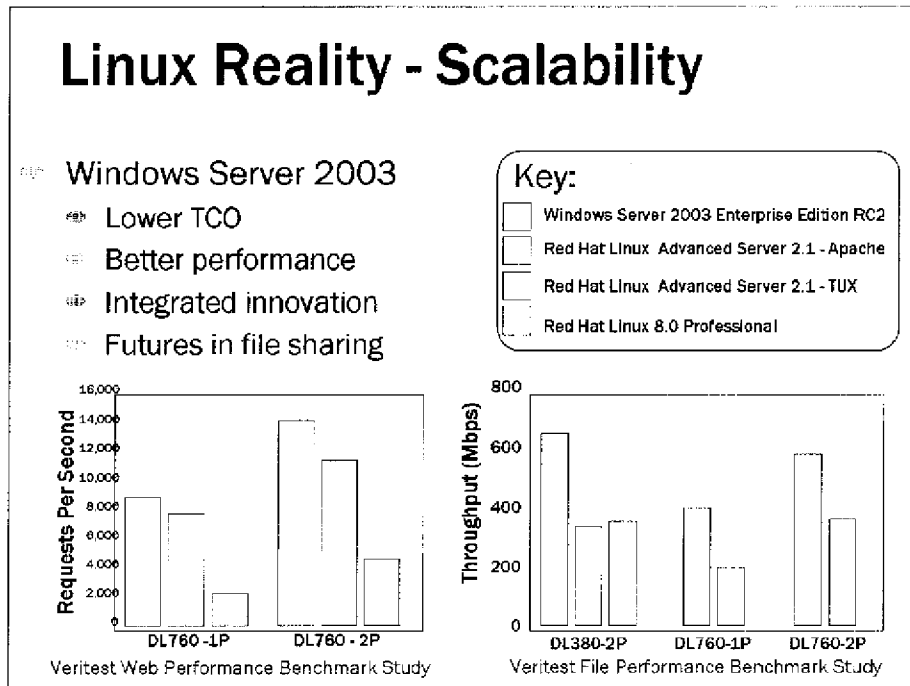
•Microsoft also had leadership positions on a 3 year basis. In fact, the gap on simple web serving was more favorable to Windows.

•The remainder of the details are in the study itself, which can be found on the <http://linux> portal.

**“Dude, Linux is just better.”**

Nope.

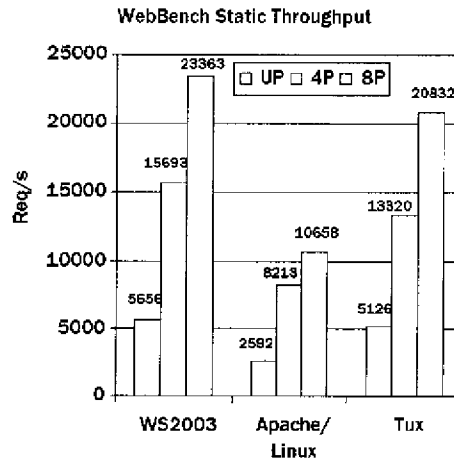




- This slide shows the actual peak dynamic CGI and ISAPI test results and the percentage increase in performance when using Windows Server 2003 vs. Red Hat Linux Apache and TUX.
  - Windows showed a 300% performance gain over Red Hat Linux Apache. It also showed significant performance margins over Red Hat TUX on all tested configurations.
  - Windows Server 2003 processed 33,991 requests per second on the 8P system compared to RedHat's TUX 13007 and Red Hat Apache 8496 requests per second.
  - Requests per seconds are a basic measure of the client/server interaction and give you a rough idea of how many hits per day a server can handle. Keep in mind, though, that WebBench's requests per seconds score is generally higher than the typical load serviced by most Web servers because WebBench uses stress tests to bombard the server with requests as fast as the clients can issue them.
- Reactive TP if asked about red Hat drop off on 8P machines:**
- Veritest noticed a drop off in performance on the 8 processor configuration on TUX. They requested server tuning info from Red Hat but they were unable to get the needed resolution from RH tech support to complete the testing in time for this report. Veritest concluded that even if Red Hat could have remedied the situation Windows server 2003 would come out ahead by a significant margin.
  - This slide uses data from page 3 of the Veritest report.

## Web Server Linux Competitive Data (WebBench Static)

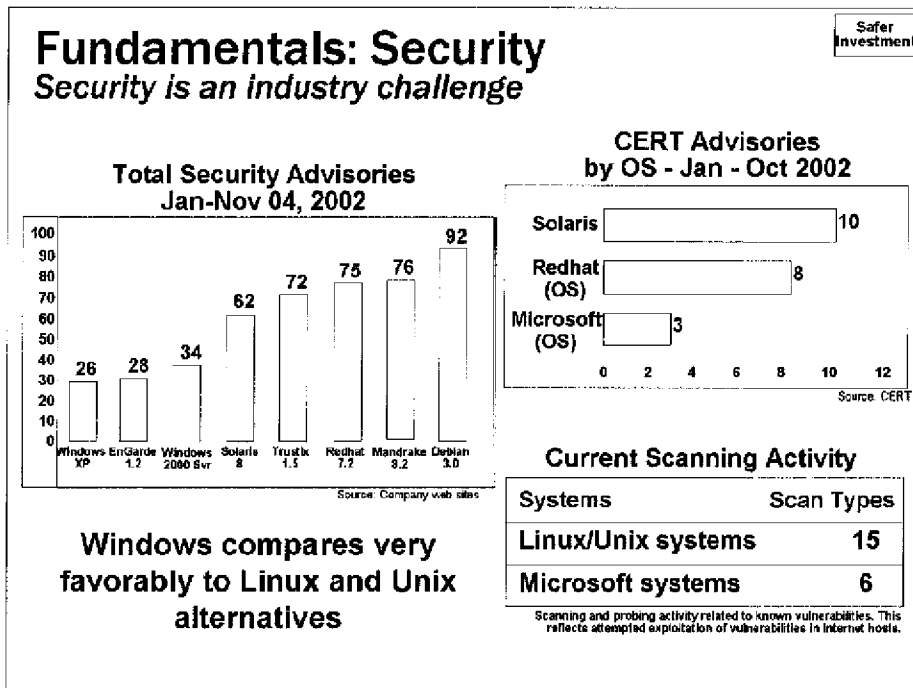
- WebBench Static
  - Static: Small static set (60MB)
  - 6.5KB average response size
  - All requests non-KA
  - Used WCAT client to drive load for 8P
  - WebBench client used for UP/4P
- IIS vs. Tux
  - UP: 10% over TUX
  - 4P: 18% over TUX
  - 8P: 12% over TUX
- IIS twice as fast as Apache/Linux
- Hardware
  - 8P 700 MHz Xeon PIII
  - 4xGB Intel XF NICS
  - 4GB RAM
- Software
  - Windows Server 2003 RC2
  - Linux
    - Red Hat 7.2 + Linux 2.4.9-31
    - Intel GB driver 4.1.7
    - TUX 2.2.0-1
    - Apache 2.0.35





**“But at least it is more secure...”**

Whatever.

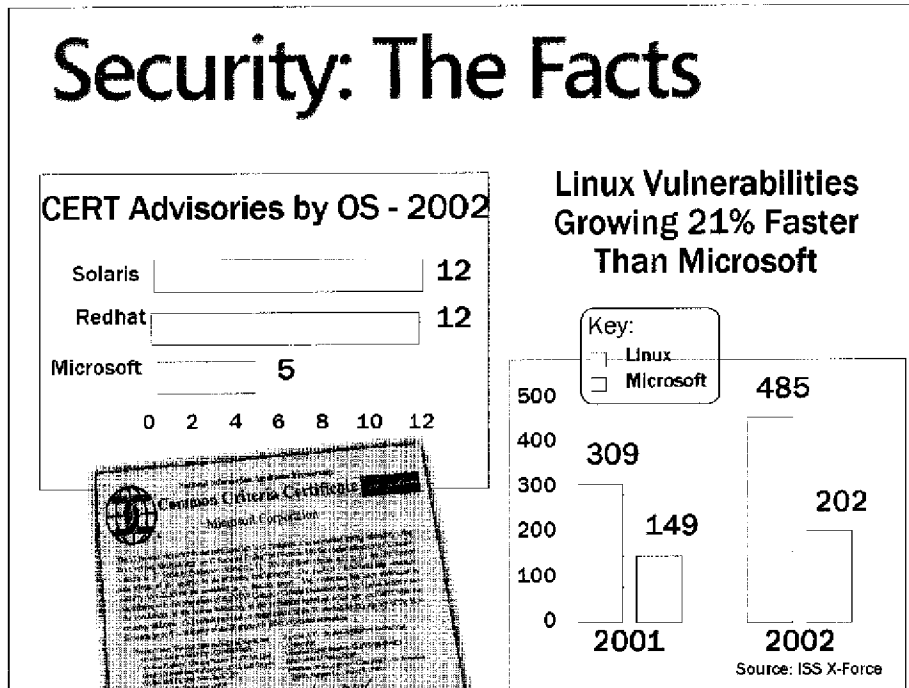


**Key Slide Take-Aways:**

Microsoft considers security to be an industry challenge. We recognize how critical this issue is for customers and partners and are committed to our leadership position in the industry on this issue. Security is top-of-mind across everything element of our business and development model. We believe that people who examine the industry data on security will conclude that Windows compares very favorably to Linux and Unix.

**Discussion Points:**

It is important to note that Microsoft considers security to be an industry challenge, and that we believe that Windows is not alone as a target for hackers. This is contrary to the belief held by many customers that Linux is inherently more secure than Windows and/or is not targeted for attacks. In fact, if customers examine the data, we believe that they will see that Windows compares very favorably to both Linux and Unix from a vulnerability perspective. For example, Microsoft issued less security bulletins and cert vulnerabilities than Linux in 2002. The fact is, the challenge faced by Linux on security is equal to Microsoft's, and it remains to be seen how well a decentralized community of volunteers can meet that challenge.



On Tuesday a Cnet story posted announcing that RedHat's Advanced Server had been certified by the DoD's Common Operating Environment (COE) process (<http://news.com.com/2100-1001-984202.html>; [http://www.infoworld.com/article/03/02/12/HNrhath\\_1.html](http://www.infoworld.com/article/03/02/12/HNrhath_1.html)). Wednesday a piece ran in Tech Daily announcing that IBM would begin a process to obtain Common Criteria certification for the Linux operating system. What followed were several trade press articles announcing that Oracle is going to back RedHat in a quest to secure Common Criteria certification (see links below). We've developed the following reactive talking points and will get them to the field in case this coverage is picked up globally.

#### Oracle/RedHat/IBM Coverage

Cnet: [http://news.com.com/2100-1001-984383.html?tag=fd\\_top](http://news.com.com/2100-1001-984383.html?tag=fd_top)

Daily Tech News: <http://www.dailytechnews.com/dtn.php?n=8>

eWeek: <http://www.eweek.com/article2/0,3959,886729,00.asp>

ComputerWorld:

<http://www.computerworld.com/softwaretopics/os/linux/story/0,10801,78484,00.html>

#### Talking Points

CC v. COE

## UK Security Site Report (mi2g)

- In May this year, 19,208 successful breaches were recorded against Linux based systems, compared to 3,801 against MS Windows based systems,

<http://www.theinquirer.net/?article=9845>

## **“GNU Project Server Hacked by Intruder.”**

☞ ...[T]he Foundation is warning that some files may still be compromised. "Given the nature of the compromise and the length of time the machine was compromised, we have spent the last few weeks verifying the integrity of the GNU source code stored on gnuftp. Most of this work is done, and the remaining work is primarily for files that were uploaded since early 2003, as our backups from that period could also theoretically be compromised," he explained.

<http://www.atnewyork.com/news/article.php/2248811>

## Linux Becoming a Target

- During August, 67 per cent of all successful and verifiable digital attacks against on-line servers targeted Linux, followed by Microsoft Windows at 23.2 per cent. A total of 12,892 Linux on-line servers running e-business and information sites were successfully breached in that month, followed by 4,626 Windows servers, according to the report.

<http://www.globetechnology.com/servlet/story/RTGAM.20030911:gtlinuxsep11/BNSStory/Technology/>

**“But what’s with all the patches?”**

Patches? We don’t need no stinkin’ patches !

## ***Which Is Buggier – Windows or Linux?***

- Red Hat Linux 7.2, released early 2001
- Windows XP, released November 2001

• **XP Pro = 27 fixes**

• **Red Hat = 158 fixes**

• (Counting patches listed on Microsoft and Red Hat web sites from XP release through February 2003.)

• <http://www.newsfactor.com/perl/story/21583.html>



## Do Linux Patches Get Delivered Faster? Reality: Even major distributions take months to turn patches around

- ⇒ Open Source model opens door to attackers when patches are delivered from only some vendors
- ⇒ Jan-Oct 15 2002, Redhat released 9 security advisories one or more months after other vendors
- ⇒ Meanwhile, systems remain vulnerable while administrators wait for the Redhat patches

### Red Hat security advisories

CVE-2002-0002 (stunnel, 1 month late)  
 CVE-2002-0003 (groff, 1 month late)  
 CVE-2002-0004 (at, 2 months late)  
 CAN-2002-0012 (snmp, 1 month late)  
 CAN-2002-0013 (ethereal, 1 month late)  
 CVE-2002-0043 (sudo, 2 months late)  
 CVE-2002-0044 (enscript, 2 months late)  
 CVE-2002-0045 (opendap, 3 months late)  
 CVE-2002-0047 (kernel, 1 month late)  
 CVE-2002-0059 (zlib, 2 months late)  
 CVE-2002-0083 (openssh, 2 months late)  
 CVE-2002-0167 (imlib, 1 month late)  
 CAN-2002-0184 (sudo, 1 month late)  
 CAN-2002-0871 (xinetd, 2 months late)

(Source: CVE advisories at <http://www.cve.mitre.org>, RedHat web site)

<http://www.cve.mitre.org>

<http://www.redhat.com/apps/support/errata>

Most linux dists appear to ship their fixes relatively close together, RH commonly issues patches later.

## Microsoft Issues Patches, But Users Don't Apply Them

	Attack date	Patch issued	Advance notice	Impact of attack
SQL Slammer	1/25/03	7/24/02	185 days	Infections doubled every 8.5 seconds
Bugbear	9/30/02	5/16/01	502 days	More than 2 million infected computers
Frethem	7/17/02	5/16/01	427 days	12 variants in first two months of activity
Yaha	6/22/02	5/16/01	402 days	intercepted in one of every 268 emails at peak
ElKern	4/17/02	5/16/01	336 days	Detected in more than 40 different countries
Klez	4/17/02	5/16/01	336 days	\$9 billion worldwide productivity loss
Badtrans	1/24/01	5/16/01	192 days	MessageLabs has seen 458,359 instances
Nimda	9/18/01	10/17/00	336 days	Spread worldwide in 30 minutes
Code Red	7/19/01	6/18/01	31 days	Infections doubled every 37 minutes

**Average: 305 days**

Source: McAfee, MessageLabs, Microsoft, Symantec, and Sophos

Forrester study, "Can Microsoft be Secure?", March 2003

## **Microsoft's Position**

It's not the products. It's the solutions.

## Microsoft's Premise

- The Microsoft Windows platform is more comprehensive, integrated, interoperable, and easy to use
- Microsoft's approach delivers better products, greater choice and a healthier ecosystem
- The combination of these results in greater business value and lower TCO



# **MS Smart Connected Organization** Integrated Innovation ... Providing Solutions

The collage features the following products and services:

- Microsoft Office Professional Edition 2003
- Microsoft Office InfoPath 2003
- Microsoft Office OneNote 2003
- Windows
- Web Services
- SharePoint Portal Server 2003
- Project Server 2003
- Real-Time Communications Server
- Exchange Server 2003
- BizTalk Server 2004
- Live Meeting
- msn Messenger Connect
- Windows Server 2003

Visual Studio .net (left vertical text)

Hosted Services (right vertical text)

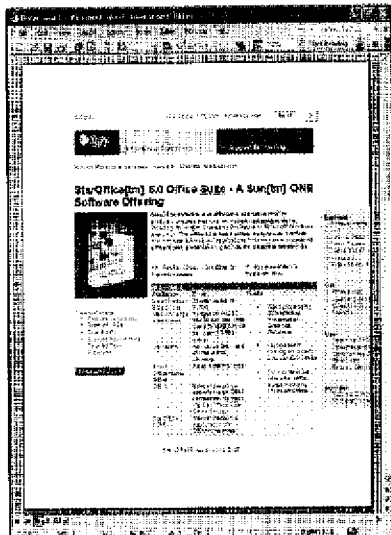
## Desktop: Better Value

Measurement (Linux + StarOffice)	Result
Deployment Success	2/3 IT Pros Could Not Complete Installation
Deployment Time	Avg. 57% More Time to Deploy than Windows
Document Compatibility	35.3% of Office Docs Opened in StarOffice Had Errors
Top 11 Office Tasks	StarOffice Tasks Took 2.7 Times Longer

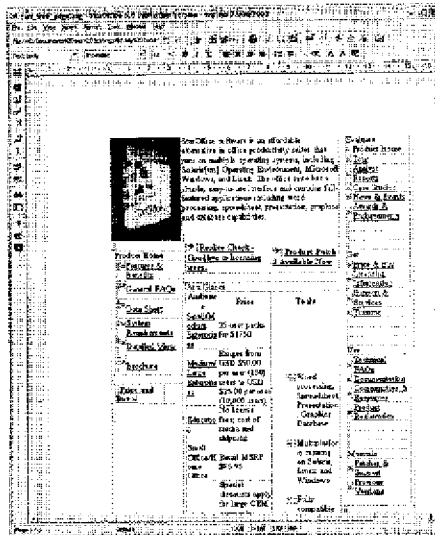
*eTesting Labs, AIR*

- Myth: Linux costs 2X-3X less than Windows
- Reality: Windows costs ~30% less per year

# Import: Copy/Paste Web Page



Microsoft Word



StarOffice 6.0





**“StarOffice is so bad that nobody wants it, even for free. A mere 100,000 units have been ordered, which won't put much of a dent in the 78 million copies of Office XP that Microsoft has shipped.”**

*...Forbes Magazine, November 1, 2002*

**“McNealy has to pick his fights with Microsoft. Give this one up. It's a distraction.”**

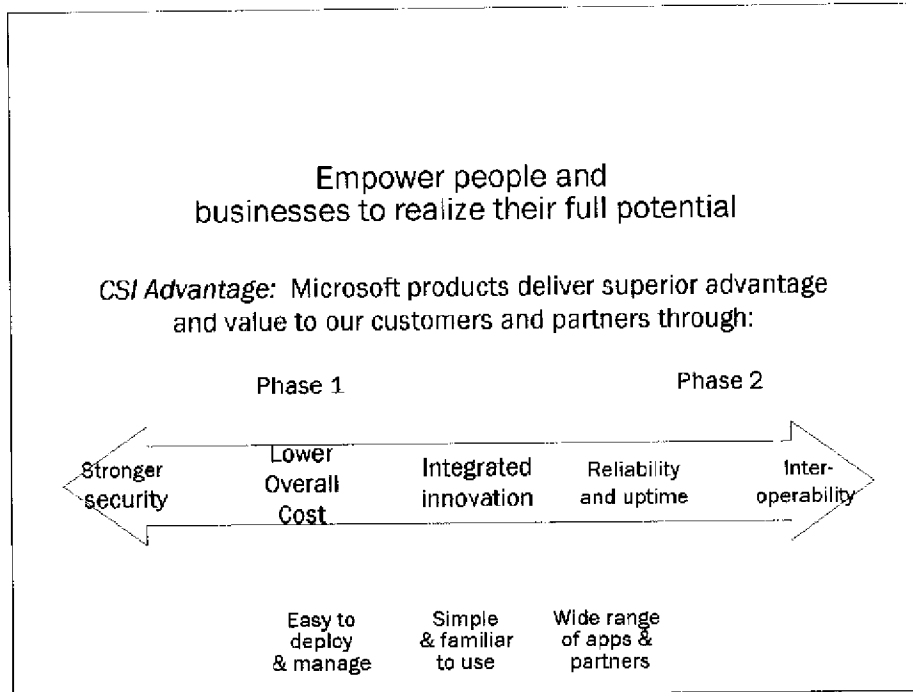
*...BusinessWeek, November 25, 2002*

## Our Strengths

- Price is what you pay, value is what you get – you get way more from Microsoft
  - Better Security
  - Better Integration
  - Better Interoperability
  - Far Greater wealth of Applications, Drivers, etc.
  - Much better development tools
  - Better Support/Quicker Fixes
- Safer Bet
  - Well defined roadmap & constant investment
  - Single point of accountability

**“Dang. So what should we do?”**

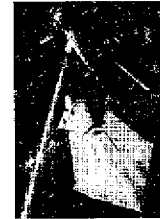
Ahhh, Grasshopper, you are learning much.



## Understand the Open Source Movement Attack of the Clones

### ☛ Products

- ☛ Many Microsoft products (Office97, Win98, Outlook) have been copied well

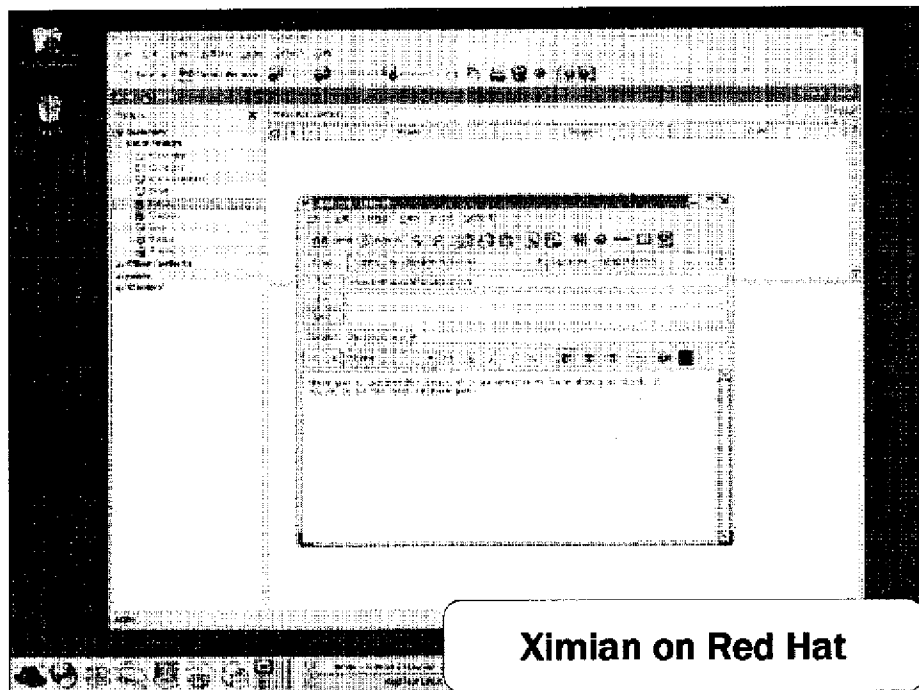


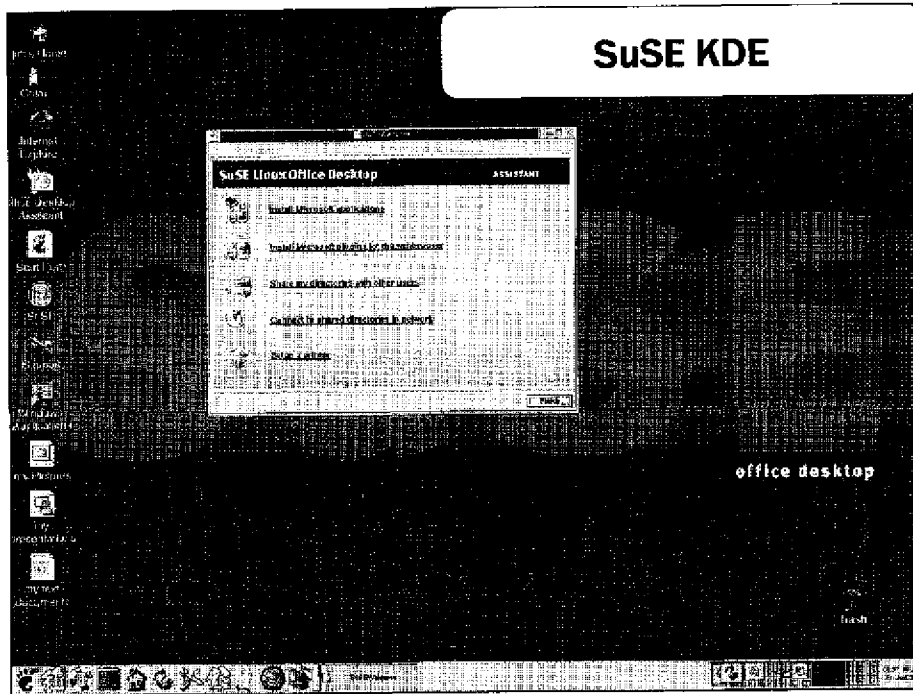
### ☛ Business Model

- ☛ Most open source vendors revenue comes from services revenue; building custom apps, support
  - ☛ Ximian, JBoss, Zope.com, MySQL, et. al.

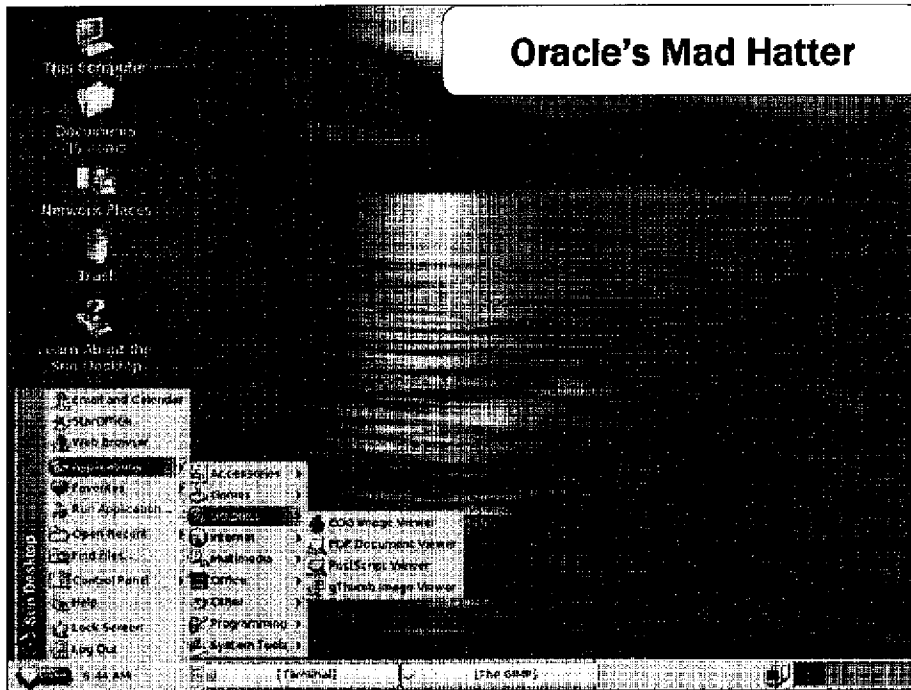
### ☛ Community

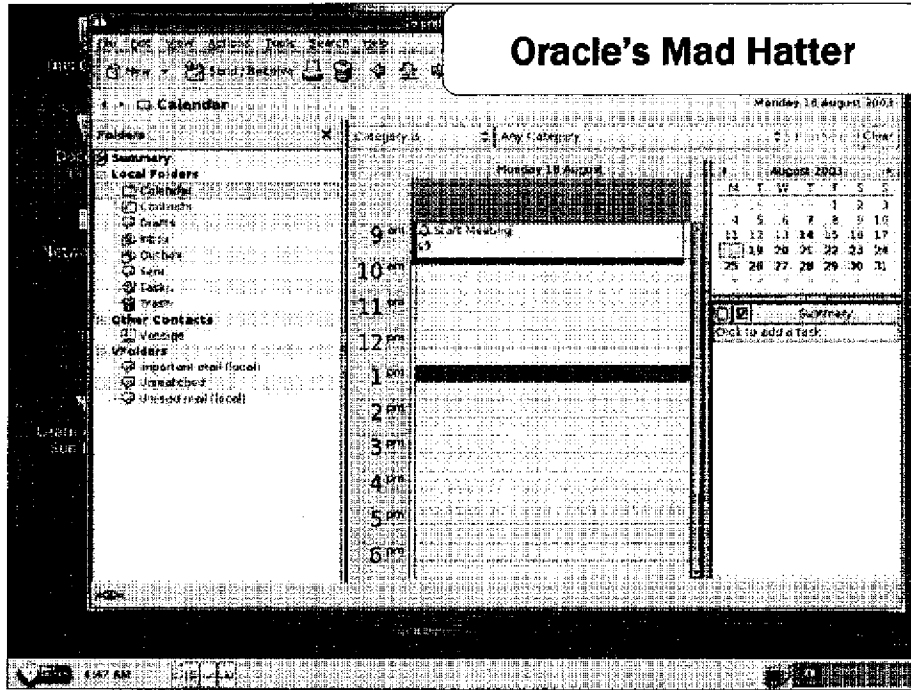
- ☛ Open source has created a competing ecosystem of developers and ISVs
- ☛ Disparate pieces & parts don't serve Enterprises needs
- ☛ Focus customer on vendor accountability





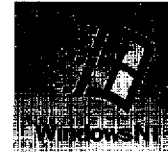






## Upgrade the NT4 installed base

- Over 60% of MS installed base supporting commodity workloads
  - 49% of NT4 installed base running workloads that could potentially be switched to Linux with minimal customer pain
- Windows Server 2003 Changes the Dynamics
  - Dramatic performance, manageability, reliability, storage capacity enhancements make it ideal consolidation platform – “Do More With Less”
  - Built-in integration points between server and client, (AD and Group Policy) give admins unique abilities
  - Broad suite of interoperability services to respond to customers’ diverse needs



Upgrading the NT4 installed base is a key to positioning Microsoft for future growth. The goal in FY04 is to migrate 40% of this installed base, representing an upgrade opportunity of more than \$1 Billion USD.

In a recent U.S. Server Tracker survey over 60% of Microsoft's installed base is supporting commodity workloads. 49% of our installed base is on NT4 running workloads that could potentially be switched over to Linux with minimal customer pain.

### Addressing the challenge in Server Consolidation in the Enterprise:

We have a unique opportunity to demonstrate customer value centered on server consolidation in the enterprise. When contrasted to Linux, Windows Server 2003 (WS03) delivers platform value by supporting key IT scenarios right out of the box as a comprehensive, integrated, and easy-to-use platform.

**Server Consolidation/Migration Scenarios:** Dramatic performance, manageability, reliability and storage capacity enhancements in WS03 make it an ideal consolidation platform, particularly for customers running legacy NT4 or Novell systems.

**Management of the Server-Client Environment Scenarios:** The built-in integration points between the Windows server and client, such as Active Directory and Group Policy, give WS03 administrators the unique ability to centrally manage settings and protect data at both the server and client levels.

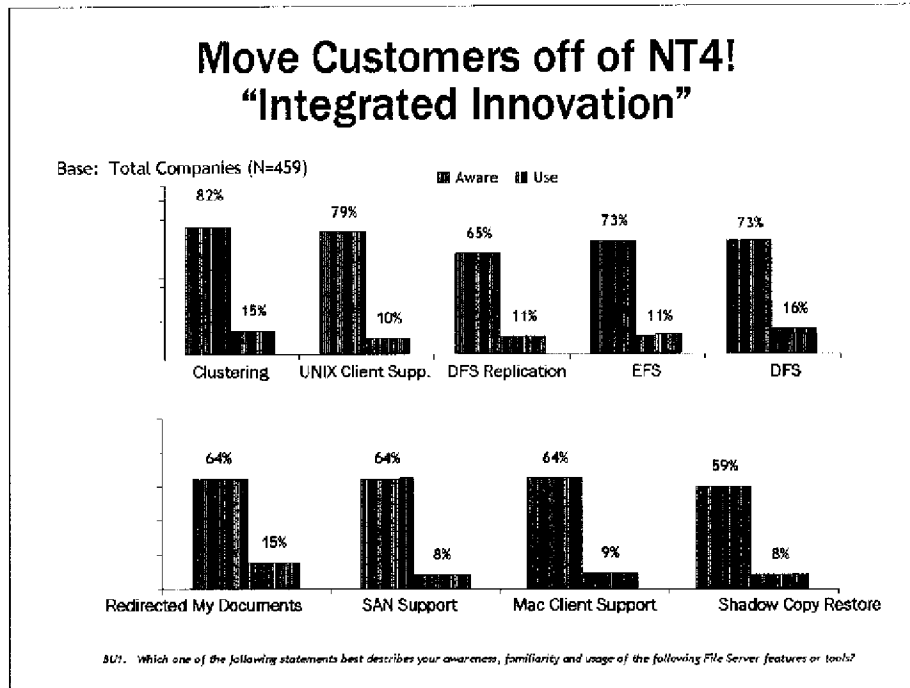
**Identity Management Scenarios:** Active Directory, made dramatically easier to deploy, use and manage in WS03, is uniquely capable of providing a single point of control for managing user identities and access to resources across multiple systems and platforms – Linux has no equivalent offering.

**Secure Mobile Access Scenarios:** WS03 delivers secure wireless and VPN access out-of-the-box, while piecing together a comparable solution on Linux is a complex and costly undertaking.

**Information Worker Productivity Scenarios:** WS03 delivers innovative new solutions for today's information worker, enabling productivity and collaboration benefits that extend far beyond the simple file sharing capabilities of Linux-based offerings.

**Small Business End-to-End Solution Scenario:** For small businesses, Windows Small Business Server is the perfect entry point into the Microsoft server line-up, delivering the richness of Microsoft's server technologies together in a simple, integrated solution for an exceptional value.

**Cross-Platform Interoperability Scenarios:** Recognizing that heterogeneous environments are a fact of life in today's IT environment, Microsoft offers a broad suite of interoperability services with WS03 to respond to the diverse needs of customers.



## Maintain the Desktop Advantage

- Desktop's market position: more to lose
- Linux and other desktop alternatives look more appealing-
  - **only** when compared to Windows 9x than when compared to Windows XP
- Win by communicating value proposition
  - Integrated Innovation: productive, easy powerful
    - Innovation: Tablet, MediaCenter
  - Stronger Security: rigorous engineering
    - Proven compatibility, interoperability, reliable partner
  - Lower Cost: TCO, deployment, manageability



### Windows Desktop

The Desktop's market position presents a different situation from that of Server.

Concentrate on positive, customer-oriented benefits of Windows XP against previous versions of Windows and competitive alternatives.

Linux and other desktop alternatives look more appealing when compared to Windows 9x than when compared to Windows XP.

Customer interest is in Linux at both ends of the desktop computing spectrum: at the low end, primarily embedded in devices like retail POS devices; and at the high end, primarily in workstations migrating from Unix for engineering or digital content creation.

Linux on the desktop is perceived very favorably by IT Pros.

Win by communicating the positive business value of Windows XP, such as familiarity, ease of use, and application compatibility,

Win by helping our customers deploy upgrades to their existing systems as well as new systems.

## Fight the Myths

### Linux and Open Source Software

Myth	Reality
Lower Cost	Numerous 3rd party TCO studies show Windows a better value over typical lifecycle
More Secure	Vulnerability stats, Common Criteria certification demonstrate Windows more secure
More Reliable	Numerous customers demonstrate 99.99% reliability; IDC says Windows just as reliable, even with more complex workloads
Faster	Veritest demonstrates Windows Server 2003 delivers significantly better File server throughput over Red Hat Advanced Server
Best for Unix migration	Microsoft Services For Unix (SFU) wins Best Systems Integration product award at LinuxWorld
Good Enough	A.I. Research study shows desktop tasks take 1/2 time to complete on Windows vs. Linux

#### Exploit Business Value Team Success

- posted **25 Linux vs. Windows TCO studies** on its Sharepoint site for internal reference

#### Team Objectives

- Develop Value Methodologies
- Provide customers with Business Cases
- Capture Value Benchmarks
- Create new tools based on benchmarked data
- Influence Analysts on Microsoft business value
- Case Studies & White Papers

#### Tools used by the BV Team

- Gartner TCO Analyst 5.02
- Total Value of Opportunity (TVO)
- MS Linux Mainframe TCO

#### When to Engage

Customer desires Business Value evidence and the scenarios match the Business Value team's core programs

#### How to Engage

Contact Scott Davis (VOLT)

## What to Do?

- Profile the Accounts, so we can make sure their infrastructure is on our platform.
- Ask the partner to give you heads up on customer situations – bribe them!
- Know what to pitch
  - Terminal Server
  - SBS Standard
  - Web Server
  - Office Lite
  - Etc.
- Feed to Corporate through Comphot

## Resources

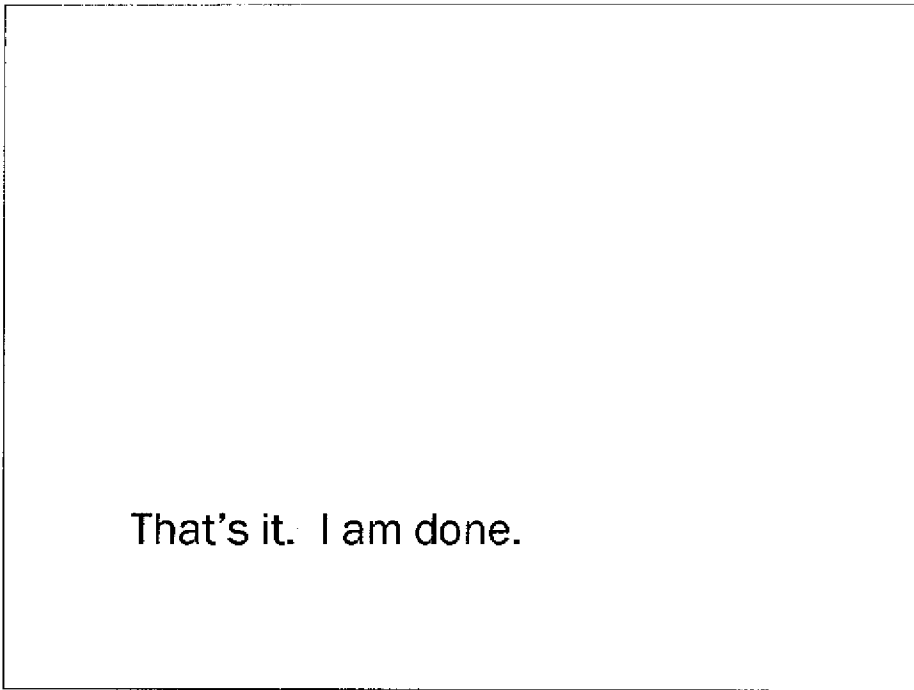
- One stop shopping:
  - <http://linux>
- Available tools on the site
  - Linux Competitive Airlift
  - Competitive selling guide
  - New customer ready BDM & TDM white papers and presentations
  - TCO studies and tools
  - Updated battle cards
- Don't forget the Office compete team
  - <http://officemarketing/staroffice>



## Microsoft vs. Linux

A black and white photograph of a woman, likely a Microsoft executive, smiling and looking slightly to the right. She is wearing a dark, patterned top. A white speech bubble with a black border is positioned to her left, containing the text "Just Win, Baby." The background is dark and indistinct.

Just Win, Baby.



## Appendix

Slides I thought I was going to use but didn't.

*customer*

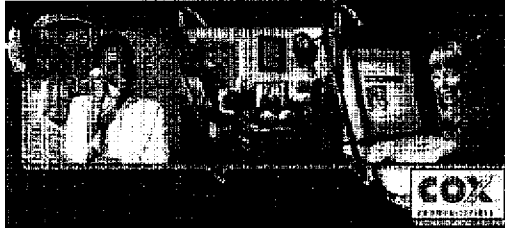


**Cox Communications**

**Alex Kucera, Account Manager  
Lloyd Burke, Services Executive  
Southeast Region**

## Customer Landscape

### Linux Threat



- Cox Enterprises:  
\$10 billion Fortune 350 company
- Business Driver:  
Increase Cash Flow
- Linux hype sparked CEO interest

Cox Enterprises ranks in the fortune 350, Cox Communications (CCI, a subsidiary of Cox Enterprises) is the third largest cable operator in the United States. CCI has been challenged by the investor marketplace (Wall Street) to increase Free Cash Flow, a leading indicator in the cable business of business well being. In a capital intensive industry like cable tv, Investors use free cash flow as a primary measure of health.

Facing the pressure of delivering an additional 350 Million dollars in Free Cash Flow (FCF) CCI is looking at every way possible to free up cash

The CEO of CCI asked the CIO to learn more about Linux,

The CIO asked the VP of IT Ops to check this out.

VP Ops. asked Dell: verify Linux on Intel ROI

Dell, Redhat. Intel produced Linux Assessment; findings: save \$7m over 5 years

## Timeline

- Confirmed Linux evaluation was under way
- Asked for "equal time", met w CIO / VP Ops
- Created preliminary business case
- Started In-Depth Rapid Economic Justificaton (REJ) & Proof of Concept

Preliminary Findings	Linux	Microsoft
Savings	\$7.3M over 3 yrs	\$13.9 M over 5 yrs

- Opportunity for Microsoft –
  - Capture \$2.4 million in server revenue
  - High services revenue
  - CRM/ERP, Cox.Net conversion to Win/SQL EAI

The MS account Team Confirmed Linux evaluation was under way

The MS account team, (a paranoid group) Asked for "equal time" and met w CIO/ VP Ops.; We had to ensure that we would have a fair hearing and our #'s would be compared honestly against any Linux eval and the perception that Linux was just a different pew in the Unix church.

By getting executives to acknowledge that MS would be considered, the playing field was leveled. CCI conducted an internal review and cost analysis that determined there were 7.3 million in savings. By bringing REJ expertise MCS was able to refine the numbers for various alternatives that allowed a more accurate comparison.

We worked with the chief architect to review the CCI analyses that had been prepared to date. WOW Numbers all over the place. An incomplete picture that made apples to apples very difficult. Most of your companies may not know all of the applications, tools and solutions they are running as well as what boxes they might be on.

After several versions and drafts and reviews, The VP Ops came to the conclusion that more info was needed. The preliminary business case was designed only to wet the appetite and ensure a full blown REJ and POC could be started. We needed to increase our understanding of the environment, what could move to Wintel/SQL from Sun/Oracle.

Started In-Depth REJ, & POC

This oppty gives MS the oppty to STOP Linux, Move Sun out of the account and Replace ORACLE. The POC will allow us to prove all the 'abilities' necessary to become the enterprise standard at CCI

Oppty for MS- block Linux, capture \$2.4m in server rev., high svc's rev, CRM/ ERP/ Cox.Net conversion to Win/SQL/ EAI

## Best Practices/Do's and Don'ts

- ☛ Assume Linux is in your account
- ☛ Find and lean on your insider friend, 'the Fox'
- ☛ Gain executive sponsor on Microsoft value proposition
- ☛ Escalate to CompHot; update Siebel
- ☛ Search for assessment funding: customer, partner and Microsoft
- ☛ Pull in MCS / partner resources early
- ☛ Leverage existing Microsoft technology clout



**Assume Linux is in your account** Someone is doing some research

**Find and Lean on your insider friend, 'the fox'** Having a trusted MSfriend in the account is critical. Some people (unix Bigots) can think of lots of reasons to not have a MS solution. MS folks may not be the strongest voice but they are true believers (Protect them, make them look good)

**Gain exec. Sponsor on MS value prop** Ensure a fair hearing. Results are very easy to manipulate be careful not to over promise You only need enough tow in not set unachievable expectations

**Contact CompHot; Update Siebel** Document the risk & oppty.

**Search for Assessment funding: customer, partner and MS.** Customers are wary to pay for the oppty to spend more money with you.

**Pull in MCS/ partner resources early** Early notice lets everyone rally around the oppty. Dell and Intel were instrumental in the success achieved to date ( But rememeber they win regardless of how Sun loses)

**Leverage existing MS technology clout** MS is installed throughout most accounts and may be playing the low cost role the Linux envisions itself in. Maximize "enterprise capability" Maturity and support of the MS platform

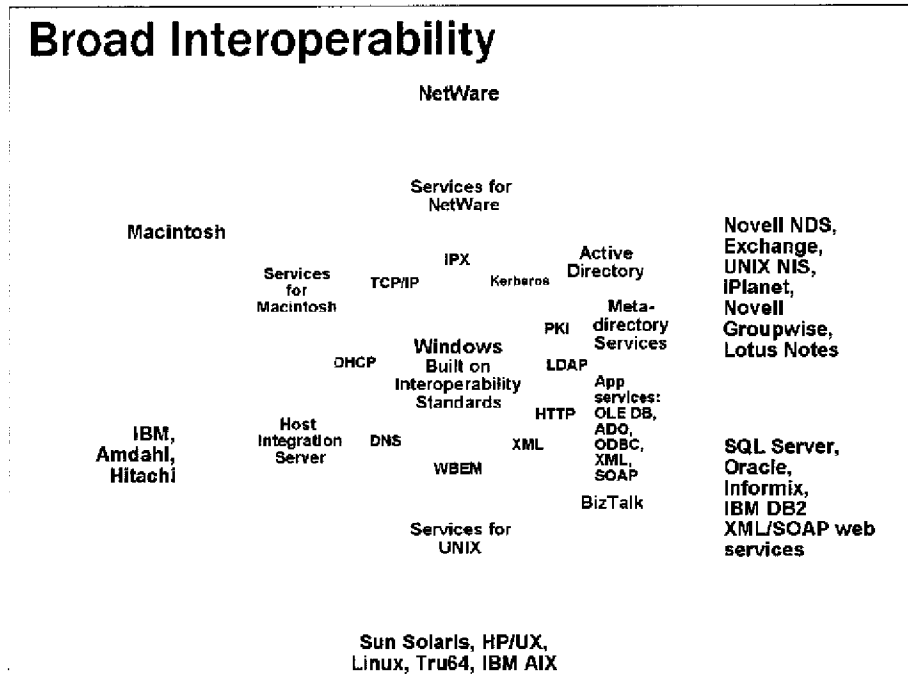
•Discuss Linux considerations at senior level, nothing lower than IT Dir.; evaluate priority of Linux consideration

•Executive level discussion: confirm if Standardization, Optimization, Consolidation, and cost reduction are key business drivers

## What did we learn?

- ☛ We must work to get customers to fully understand our value proposition
  - ☛ *"Microsoft is too expensive for the value we gain"*
    - ☛ CFO, Government sector
- ☛ We must develop much better relationships with our customers than our competitors
  - ☛ *"I have key suppliers that I ask advice from, and Microsoft isn't one of them"*
    - ☛ CIO Global bank
- ☛ We must present a better roadmap of the future for our customers
  - ☛ *"I understand where Sun, Oracle and IBM are going with technology, but not Microsoft"*
    - ☛ Chief Architect Global Bank





### Key Slide Take-Aways:

Windows 2000 provides an unmatched level of interoperability at both the platform and application services level.

- We start with industry standards built into the core of Windows 2000 – TCP/IP, DNS, http, Kerberos and others.
- We then have numerous solutions to provide interop at four levels:
  1. Network: e.g. Novell networks talking to Windows networks
  2. Data: e.g. sharing files and application data between diverse systems
  3. Management e.g. consolidating directories from multiple platforms
  4. Application e.g. getting access to applications and services that are running on other platforms

### Discussion Points:

- Microsoft has products for Windows 2000 to allow virtually any other operating system client, including Macintosh, UNIX and Linux to use Windows 2000 Servers.
- Products are also available to allow Windows clients to access other server platforms, including UNIX, IBM mainframe and Novell NetWare.
- Microsoft goes beyond the platform interoperability capability to also allow Windows applications and environments to work seamlessly with data and applications hosted on other platforms.
- Active Directory interoperates with other system directory services and can host directory services for third party enterprise applications running on other platforms.
- Data sharing technologies such as XML, ODBC and OLE DB are built into Windows 2000 and SQL 2000 to allow access to distributed corporate data and applications.
- Even UNIX scripts and applications can run on Windows 2000 through the Services for UNIX and Interix products.
- In summary, no other enterprise platform can match the diversity of interoperability that is available with the Windows 2000 product family.

## Thriving Global Ecosystem

### *Enables Greater Choice, Flexibility and Value*

- 750,000 Microsoft partners
- More than 450,000 MCSE professionals
- More than 1.5M MCP certifications holders
- 6M+ developers
- 2200 user groups
- 400 community web sites
- Largest ISV community worldwide

#### **Key Slide Take-Aways:**

Microsoft believes in and is highly committed to building a vibrant global ecosystem of application providers, service providers, systems integrators, training providers, and hardware developers to compliment the work it does to develop strong, useful technology products. This thriving Microsoft ecosystem of partners and enthusiasts enables customers to realize lower costs via competitive prices, and greater choice and versatility as they seek out technology support, services and solutions across the globe in their local communities. Microsoft's business model also ensures that there is considerable opportunity for people around the world to be successful in choosing to build a local business or software economy around the Windows platform. We did a study and found that, on average, for every dollar that goes to Microsoft, nine dollars go to the local economy.

#### **Discussion Points:**

Microsoft has a more vibrant global ecosystem than Linux/NCS alternatives. Worldwide, there are:

- 750,000 Microsoft Partners
- More than 450,000 MCSE professionals
- More than 1.5M MCP certifications holders
- 6M+ developers
- 2200 user groups
- 400 community web sites
- Largest ISV community worldwide

...all making up a global, yet local, community of technology service and solution providers to support Microsoft customers around the globe.

*In contrast*, the Linux/NCS ecosystem has no single 'center of gravity' or central body investing in and assuming broad responsibility for its overall health and growth. Today, there are 10X more applications for Windows Server and 100X more trained & certified service providers. In considering this, customers will want to be aware that there are elements of the Linux/NCS ecosystem that are seemingly in competition with each other. For example, IBM has a substantial interest in winning services engagements on Linux, and that puts IBM's services organization (the IBM Global Services (IGS) organization that accounts for >50% of IBM's revenues) in direct competition with any service provider who wants to deliver solutions on Linux. Customers who look to IBM for support and services risk being locked into an end-to-end IBM solution that is typically based on their proprietary services model, offering little competitive advantage and an "ecosystem of one." Being locked into IBM eliminates any advantage of choice that Linux/NCS is supposed to provide.

## Desktop: Greatest Choice

- **Largest number of applications**
  - >4000 apps tested by Microsoft with Windows XP
  - Many, many more available
- **Largest number of devices**
  - 12,000+ device drivers on the XP CD
  - 41,000 devices submitted to WHQL
- **Broader availability of services**
  - >450,000 MCSE professionals world-wide
- **More training options**
  - Wide range of Microsoft certified training courses
  - Many Microsoft certified training providers

## Progress on the Fundamentals

- Reliability
  - IDC TCO Study say Windows and Linux both 99.99+%
  - Windows servers more heavily burdened
- Scalability
  - Windows greater scale-out, scale-up, 60% faster than Samba
- Manageability
  - IDC TCO Study says Linux requires higher staffing costs
- Security
  - Fewer vulnerabilities; faster response

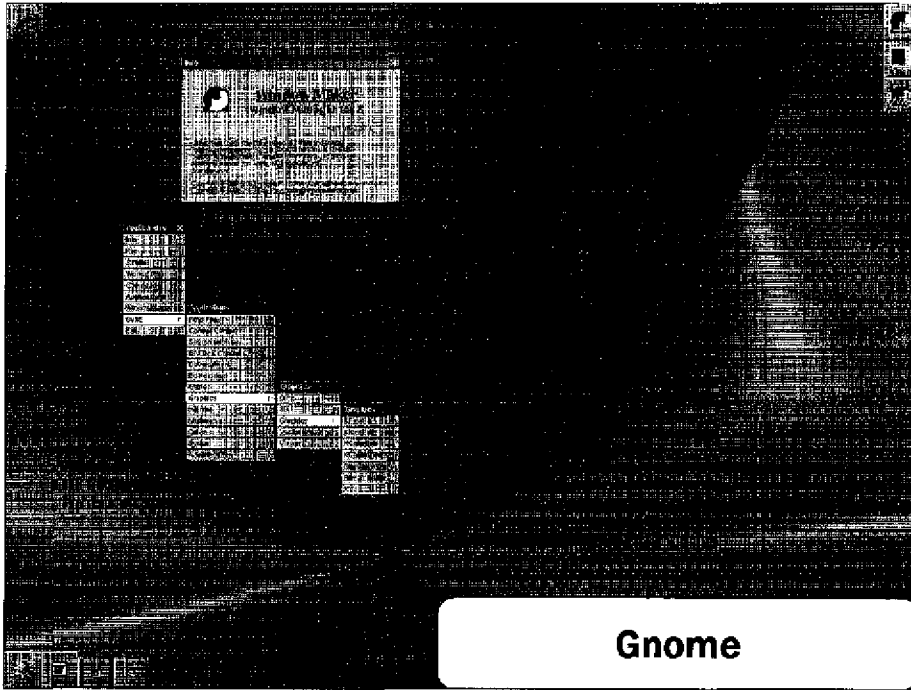
## Achieving World-Class Uptime

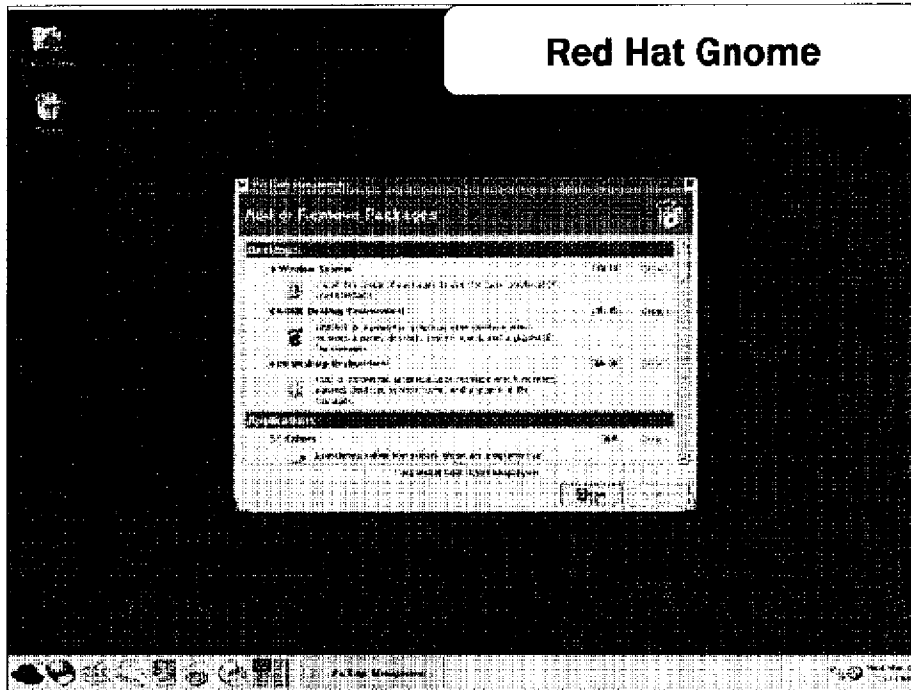
- |                                   |   |
|-----------------------------------|---|
| <b>Single Server Availability</b> | <ul style="list-style-type: none"> <li>□ Windows 2000 delivers up to 99.99% availability</li> <li>□ Cinergy achieving 99.99% availability</li> <li>□ MSNBC delivered 99.98% during the Winter Olympics</li> </ul>                 |
| <b>Multi-Server Availability</b>  | <ul style="list-style-type: none"> <li>□ Madrid Stock Exchange achieving 99.999%</li> <li>□ MS.COM has top rated availability (Keynote benchmark)</li> <li>□ Continuous availability for City of San Diego 911 service</li> </ul> |
| <b>Fault Tolerant Offerings</b>   | <ul style="list-style-type: none"> <li>□ Stratus FTServer offers guaranteed 100% availability</li> <li>□ Hewlett-Packard Compaq offers 99.99% uptime guarantee</li> <li>□ Unisys offers 99.99% and higher availability</li> </ul> |
- Windows 2000 made substantial improvements over Windows NT 4.0
  - Elimination of 80% of reboots per server per year in Windows 2000
  - Windows Server 2003 is expected to have 50% less down-time

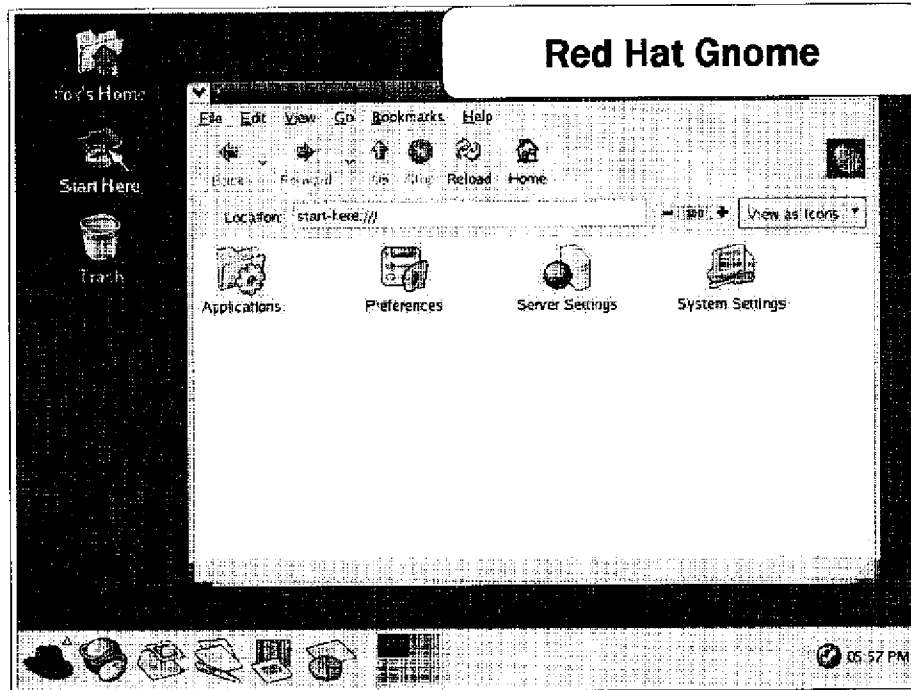
Lets start with Reliability. Unfortunately, there is a perception that Windows is less reliable than Linux. We believe that this perception is usually based on customer experiences with Windows NT4 (often early versions prior to SP4). What is important to note is that there have been significant improvement in reliability with Windows 2000 including a great reduction in numbers of reboots and a mean time to crash that is now measured in years. With Windows 2000 customers achieve single server availability of 99.99% and multi-server availability of 99.999% when they have sound testing (checking driver & app compatibility & hardware problems) and integration processes in place, use standard hardware and maintain strong operations/mgmt practices. In addition, our partners offer solutions built on Windows 2000 with guarantees of up to 100% availability, much better than the guarantees offered for NT4. Windows .NET Server 2003 will improve reliability even further, primarily with the new and resilient Web (IIS6) application model.

### Slide information background:

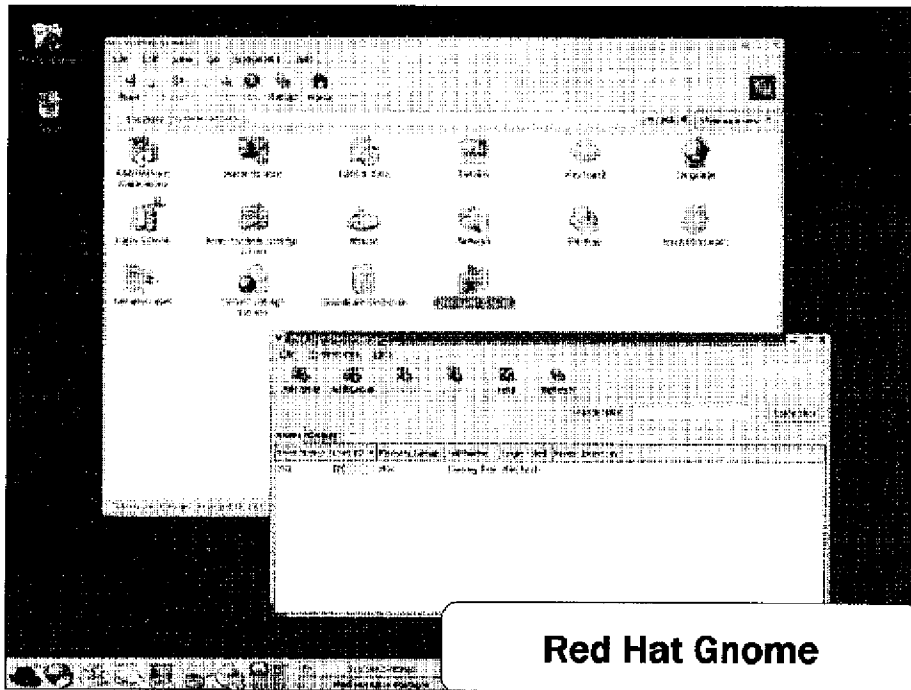
- Cinergy - Largest non-nuclear electric supplier and one of the leading diversified energy companies in the United States.
- MSNBC hosting the official NBCOlympics.com site during the 2002 Winter Olympics was able to maintain high service availability while serving 113 Million page views and enduring multiple Net attacks.
- Madrid Stock Exchange achieved 99.999% availability and zero downtime in the first seven months running on Windows 2000 Datacenter and Advance Server and SQL 2000.
- Microsoft.com – results from Keynote measurements commissioned by Microsoft show that MS.com has had the highest availability YTD 10/2002 when compared to it's top 5 rival sites (AOL, YAHOO, ORACLE.COM, SUN.COM, and MSN.COM). Rivals selection defined by Microsoft.
- City of San Diego 911 service - San Diego Fire & Life Safety Services achieved continuous service availability running on Windows 2000 Advanced Server.
- The OEM guarantees consider only unplanned reboots in the downtime.
- Stratus and Compaq/HP offer their guarantees with W2K but not with Linux. Compaq/HP used to offer 99.9% with NT (520 minutes vs 52 minutes of downtime for W2k).
- Compaq/HP and Stratus need to do an availability review before accepting a customer. This includes software, mgmt, physical connections, network, hardware, ...



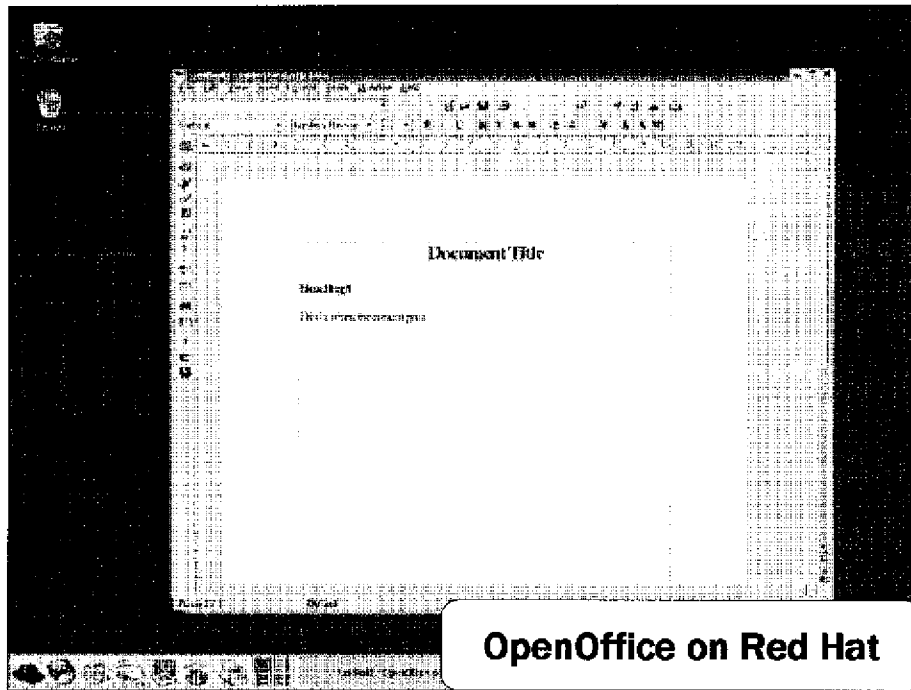


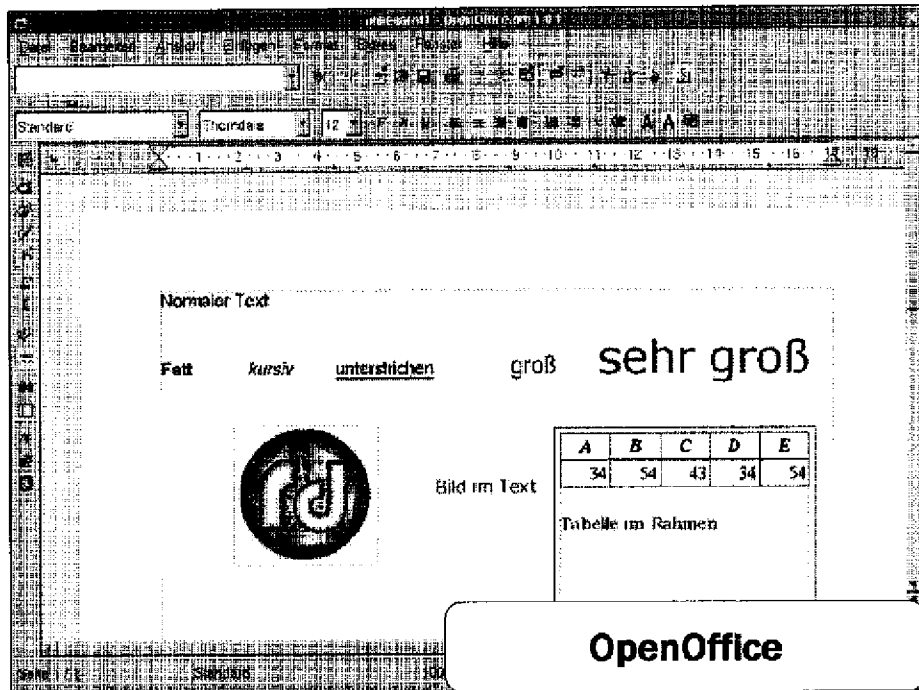


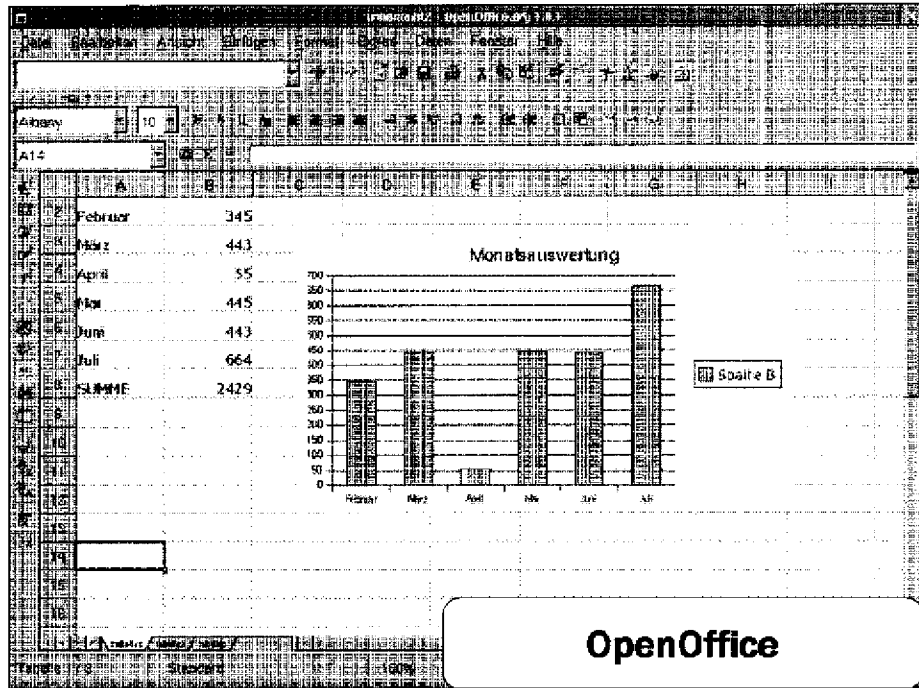




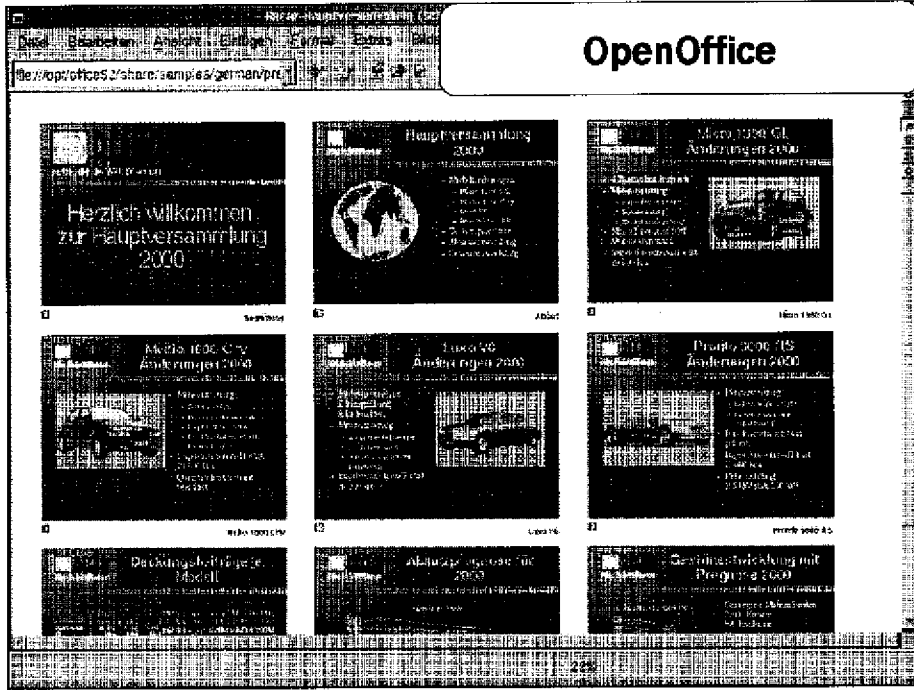
Red Hat Gnome

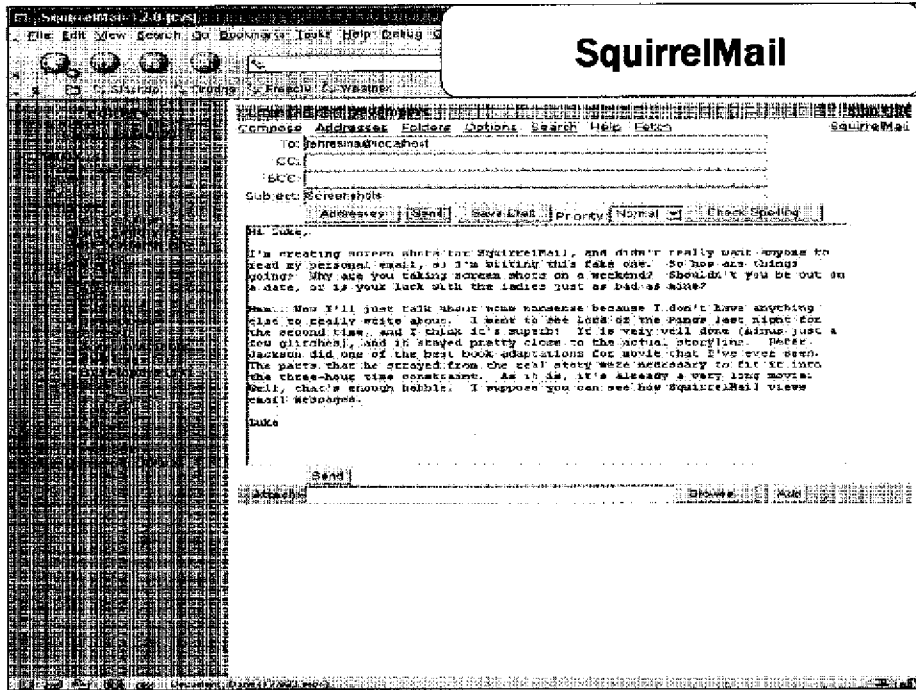






OpenOffice







The screenshot shows a calendar application window. The title bar includes 'Program', 'SYSTEM', and 'FILE'. The menu bar contains 'File', 'Edit', 'View', 'Action', 'Tools', and 'Help'. The toolbar has icons for 'New Appointment', 'New Task', 'Print', 'Go To', 'Copy', 'Paste', 'Undo', and 'Redo'. The main area displays a weekly view for December 2003, with days from Monday to Friday. The time slots range from 9 AM to 7 PM. A sidebar on the left contains navigation icons. A right-hand panel shows a monthly calendar and task options like 'Check off task', 'Pre-Book', 'Hold-Off', 'Out-of-Office', and 'Dry-Cleaning'. A white box with the name 'Ximian' is overlaid at the bottom of the screenshot.



