

**Windows 3.1 Program Review
February 27, 1992**



Agenda

- A. Executive Summary**
- B. Internal Test Plan and Results**
- C. Application Compatibility**
- D. Beta program**
- E. New user tests and results**
- F. Device Support Status**

**HIGHLY
CONFIDENTIAL**

**MS7023373
CONFIDENTIAL**

Document No. 311
**DEFENDANT'S
EXHIBIT**
5707

**MS-PCA 1113867
CONFIDENTIAL** }

A. Executive Summary

This summary covers 9 metrics we are using to determine if Windows 3.1 is ready to ship or not. The current schedule and the ship check list are covered in this section as well.

1. *Core product*, drivers, and hardware support are solid. Internal tests are comprehensive and are passing overall. The most active beta testers are also making very positive statements about how solid the product is.

2. *Internal bug traffic* continues at a steady pace. We've made 75 changes to RC 3 since 2/17. Of those, around 26 were required changes, the rest we could have easily shipped with. Of the 26, only a handful, around 9, were absolutely required to ship the product.

3. *Application Compatibility* is good. Only 10 apps of any importance were broken, of these 6 have already updated. Updates for the remaining 4 are very close. Overall, apps work well with Win 3.1.

4. *Beta program*. There is still a high volume of reports coming in from the beta test, which is now about 15,000 sites world wide. We get 400-500 total reports a week. 936 bugs were reported in Feb on RC1 which is the latest build the beta sites have.

5. *Internal floppy setup test* is looking pretty good. This test has uncovered a potentially nasty bug with the after dark screen savers and with preserving the default printer. The overall success rate for setup in this test will be around 98% assuming we fix the bugs mentioned above.

6. *New beta test data at this point is troublesome.*

- New sites that got the final beta: Of the 61 sites we called, only 90% setup without a hitch. Of the 10% (6) failures, 2 had DR DOS, 1 had a bad hard disk, 1 got bad floppy disks, 1 had an incompatible BIOS, and 1 found a bug we have fixed with the mouse driver. The bad news here is that the product could only solve 1 of the 6 problems.
- New sites that got RC1. So far, we've called down 34 sites. Again only 90% setup without a hitch. We do not yet have the details on the failures. We also queried these people on app compatibility, only 70% said their apps mostly work. The call downs were done by telemarketing, the tech team is in the process of getting the details. Obviously, understanding this is a high priority.

Targeting to get 100 new data points on RC3.

7. *PSS beta test* is in progress.

8. *MS take home test* will happen next week. Targeting to get 200 data points.

9. *Rollout to MS Corp* will happen next week.

HIGHLY
CONFIDENTIAL

MS7023374
CONFIDENTIAL

MS-PCA 1113868
CONFIDENTIAL

Current schedule

Feature Complete Oct 9 (done)
Performance complete Nov 4 (done)
Doc release to Int'l Dec 11 (done)
Final Beta to PRS Dec 20 (done)
SDK/DDK Final beta to PRS Dec 23 (done)
Enter Final System test Feb 17 (done)
Release to Mfg Mar 9

SDK schedule

Last of books to printer Feb 28
RTM for software Mar 23
Books arrive at Mfg Mar 30

DDK schedule

Docs to system prod/printer Mar 4
RTM For software Mar 23
Books Arrive at Mfg Mar 30

French, German, Spanish

Software to Mfg Mar 16

Dutch, Swedish, Italian

Software to Mfg Mar 23

Windows 3.1 Ship Final Check List

- All internal test suites pass 100% or failures are understood and waived
- The "5 day" grinder regression test passes, if it fails we restart the 5 day clock
- Code is frozen for 5 days, IE no code changes. (hard ship date is 3/23)
- No recall class bugs or symptoms open from internal testing
- No regression in app compatibility
- No recall class problems open from the beta program
- The most active beta testers say "ship it"
- Internal floppy setup test stays at 98% passing
- New beta tester data is well understood and all high volume issues which can be fixed in the product are. Same for MS take home test.
- No outstanding recall class symptoms from MS Corp rollout

- Sign off from PSS that Win 3.1 is ready
- Thumbs up from 10 major ISVs
- Thumbs up from apps group
- External license agreements signed (only Novell and Futuresoft remain)

**HIGHLY
CONFIDENTIAL**

MS7023375
CONFIDENTIAL

MS-PCA 1113869
CONFIDENTIAL

Windows 3.1
February 27, 1992



B. Internal Test Plan and Results

**HIGHLY
CONFIDENTIAL**

**MS7021176
CONFIDENTIAL**

**MS-PCA 1113870
CONFIDENTIAL**

Windows 3.1 Test Status

Test Team

The Windows 3.1 test team consists of 39 testers (includes full-time and contractors) split between four primary test groups: System Test, Network Test, Compatibility Test, and Test Development. The Windows 3.0 test team consisted of 15 full-time and contract testers.

Final Test Plan

Our final test plan includes running a full regression suite, executing all automated and manual scripts. In addition, we have a 48-hour automated stress test in place that exercises ISV apps, printing, multiple VM's etc. Once we have frozen the product for RTM, we will begin a 5 day final system test which will include rerunning 48 hour stress test, retesting all A list Windows and MS-DOS apps, install all lab machines from disk and rerun acceptance tests. Should any problems that require core code changes occur once the product has been frozen, we will rerun all final system tests to ensure that no regressions have been introduced.

Test Status

Systems:

Currently testing 122 different systems in house on a regular basis. These include all popular OEM systems (Compaq, Northgate, Dell, Zenith, Gateway, etc) and less mainstream systems as well. With each 3.1 build, we routinely execute our acceptance (smoke test) on 40 machines to ensure a wide cross-section of machine compatibility.

Display Drivers:

Currently testing all displays supported: 8514, EGA, EGAHIBW, EGAMONO, HERCULES, PLASMA, SVGA, TIGA, V7VGA, VGA, VGAMONO, and XGA. Current test results indicate that 99% of all tests run are passing. Remaining problems preventing tests from reaching 100% pass and are resolved postponed:

- 5920 v7vga: grabber not handling high graphics correctly
- 6702 XGAHI: driver fails on numerous ROP3 operations
- 7008 XGA: can't change to video mode 0x10 in a window
- 7010 XGA: print screen with video mode 6 has horiz. smears
- 11168 TIGA: Hercules GS & MS-DOS Graphics Apps
- 11510 xga: GetNearestColor wrong in monochrome beep
- 12979 xga: fails brush styles monoweave, monobricks
- 13606 V7VGA: incorrect BRUTE printing in background
- 13636 TIGA: Causes GP in cardfile when printing in background (machine specific)
- 13641 TIGA: Samcat.dib has mysterious white spot
- 13644 TIGA: hercules problems with DISPTTEST.EXE

HIGHLY
CONFIDENTIAL

MS7023377
CONFIDENTIAL

MS-PCA 1113871
CONFIDENTIAL

Printer Drivers:

Currently testing all printer drivers included in 3.1: CANON10E, CANON130, CANON330, CIT24US, CITY9US, CIT0H, DICONIX, DM309, Epson 7500, EPSON24, EPSON9, ESCPZ, EXECJET, FUJ24, FUJ19, HPDSKJET, HPPCL, HPPCL5A, IBM4019, IBM5204, IBMCOLOR, LBPII, LBPIII, NEC24PIN, OKI24, OKI24 393CPlus, OKI9, OKI9IBM, PAINTJET, PANSON24, PANSON9, PG306, PROPRINT, PROPRN24, PSI, PSCRIPT, QWIII, THINKJET, T1830, TOSHIBA, TTY. Current results show 99% of our tests passing, remaining problems:

- #14340 Rotated Arial positioning problem with the PG306
- #15044 Unable to print specific Winword document with many TT fonts on IBM 4019
- #15184 Eavelope bin not being used on IBM QW III

Mouse Support:

Currently testing the following mouse drivers: MS Mouse, LMouse, HPMouse and all tests are passing 100%. Driver testing has been conducted with different revisions of MS mouse, including Ballpoint. In addition, we've been testing with all currently shipping Logitech and Mouse Systems products to ensure compatibility. We have several reports of erratic mouse behavior from several beta sites which is currently being investigated (currently not reproducible in house).

Sound/CD-ROM

In addition to the regular configuration testing performed by the MM group, we regularly test the following sound devices: SoundBlaster 1.0, SoundBlaster 2.0, ThunderBoard, Roland MPU-401, Roland LAPC1. Recently added the MCI/DA driver for CD ROM support and we're currently testing a variety of CD-ROM drives to ensure compatibility (hardware includes Sony, NEC, Tandy, & Toshiba). Tests using sound cards are at the 99% pass rate. CD-ROM testing is in progress. Problems preventing tests from reaching 100% pass and are postponed are:

- 9422 Driver Add OK button clipped
- 10669 Media Player CD Audio cannot change track when stopped
- 14442 SONIC: MIDIMAP setup Port name failed to narrow
- 14448 SONIC: MIDIMAP I/O Based patches button confusing
- 14453 SONIC: Error message when installing Roland LAPC1 card
- 14455 SONIC: Drivers dialog doesn't show hourglass enough
- 14972 SONIC: MM Beethoven hangs if you remove [MCI] CD AUDIO
- 15419 SONIC: driver applet setup limits me to use of 1 cdrom

Networks

Currently testing Novell, LanMan 2.0/2.1, DecNet, Lantastic, Banyan, 3Com networks with their supported drivers. In addition to running our NCT (Network Compatibility Test) in each configuration, we're testing network applications (Lotus Notes, cc:Mail, DaVinci mail, etc.) and 3270 applications (Rhumba, Irma, etc) to ensure compatibility. All network and application test results are at 98% pass rate.

- 710 Netbios commands hang VM on Netware286 (under investigation)
- 9731 Lanman lets you log off when running off net
- 13598 Cardfile file open, save-as - files different (not repro)
- 15341 NETWORKS: DOS BACKUP problem on Lantastic w/multi VM's
- 15357 Novell: Popup Message > 40 chars get truncated.
- 15409 NETWORK: TCS 10Net - 10Windows allows multi connect in API
- 15410 NETWORK: TCS 10Net - 10Windows - WINNET API Test Failure

HIGHLY
CONFIDENTIAL

MS7023378
CONFIDENTIAL

MS-PCA 1113872
CONFIDENTIAL

SHELL/CONTROL PANEL

File Manager/Program Manager/Control Panel tests are at the 99% pass rate. There are two remaining problems with the CP ports dialog:
14313 Keyboard interface problem in CP I/O port Combobox
14428 CONTROL: Changing COM1 Base I/O address

SETUP

We have been executing an exhaustive setup suite to ensure that 3.1 can be installed successfully. We regularly perform a series of upgrade tests over 3.0/3.0a including a subset of the system configurations listed earlier. In addition, we just completed a round of disk installation testing on 122 lab machines with 119 successful installations. Of the three failures, one was not reproducible, 1 was attributed to having mismatched dos components (io.sys was incorrect), and the last failure was an insufficient disk space problem which is currently being investigated.

ISV APPS

We have been regularly testing 88 ISV A & B list applications. Current test results indicate that 98% of our test cases are passing. This figure includes over 6000 test cases using these applications. We're currently rerunning our apps tests with updated RC candidates to make sure no regressions are introduced.

DOS APPS

Our internal test suite includes testing of 137 MS-DOS applications. We're currently completing a regression pass through all of the applications and are unchecking PIF file settings, as well. One problem preventing 100% pass of tests is:

15202 DOSAPP: MS Word 5.5 - Bad FULL SCREEN (postponed, config specific)

Trustype

Standard set of font/printing tests are executed on each build using a variety of display/printer drivers. Acceptance test includes using EGA, VGA, SVGA with the LJTP, LJSD, PSCRIPT, and Epson9 drivers installed. All outstanding Trustype problems have been resolved as of build 103d with all tests passing.

OLE

Our automated functionality and stress suites all pass 100% without problems.

Limitators

In addition to regular testing with EMMS86, we regularly test with 386MAX and QEMM. All configuration tests are passing 100%.

Applets

Current acceptance tests for Calculator, Calendar, Cardfile, Character Map, Clock, Notepad, and Recorder all pass 100% of our tests. There is a repaint problem with Paintbrush that is being investigated (test script error) and Write has a problem with our fonts test - currently not reproducible, but being investigated (99%).

Smartdrive

Over the life of the 3.1 project, our Smartdrive testing has included three main areas: compatibility with IHV hardware, third party drivers, and MS-DOS version compatibility. Our compatibility testing has included regular testing with MS-DOS Versions 3.1-5.0, using third party disk drivers (i.e. DMDRVR, Vfeature), and compatibility testing with IHV products (Barnoulli, Syquest, etc). The test team is currently completing a regression pass with to ensure that no problems have been introduced with recent bug fixes. To date, all regression tests have passed.

HIGHLY
CONFIDENTIAL

MS7023379
CONFIDENTIAL

MS-PCA 1113873
CONFIDENTIAL

Component Tests

Currently running API component tests for Kernel, USER, GDI for each build. All of these RATS tests are passing 100%. We recently added API parameter validation tests and those tests are passing at 100% rate as well.

HCI

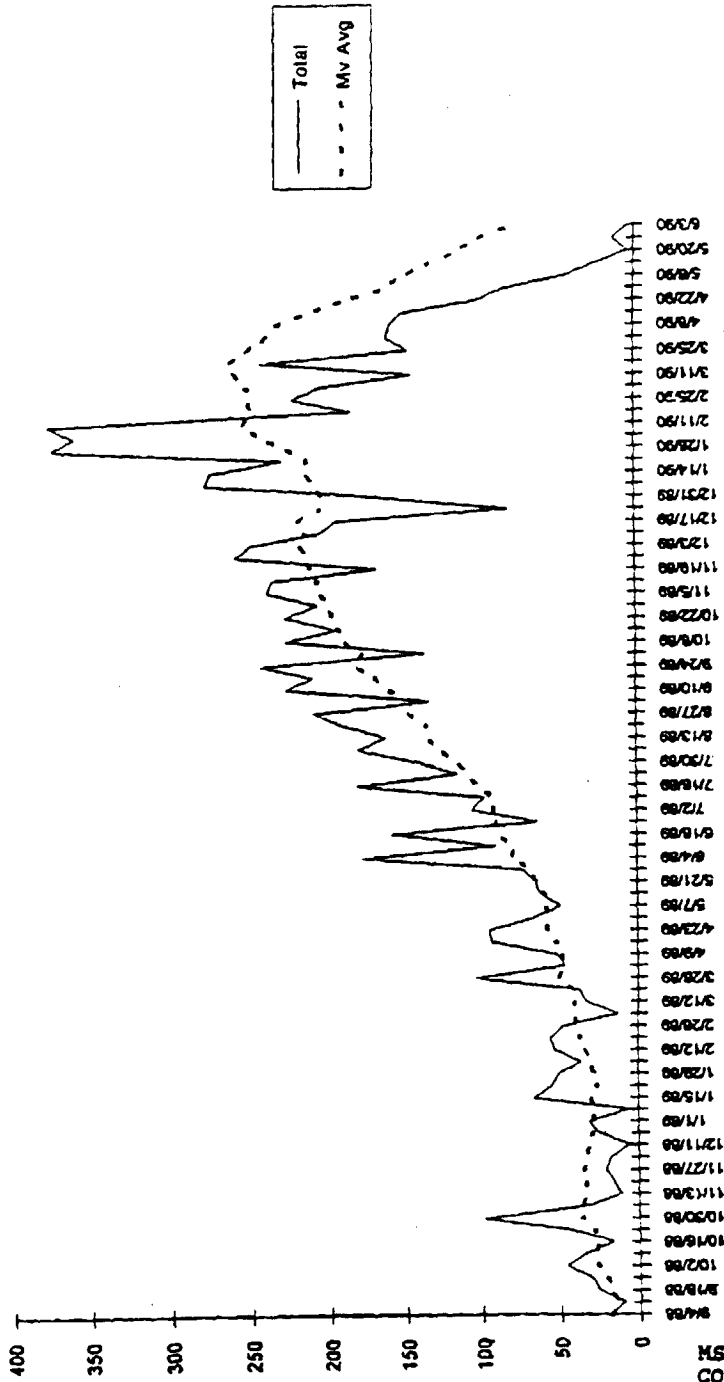
We sent the Windows Hardware Compatibility Test to approximately 300 OEM partners. Some 200 OEMS executed the test suite and returned their test results to the Windows group for evaluation. Currently, some 1000+ systems have passed the 3.1 HCI and these systems will be included in the Hardware Compatibility List. For comparison purposes, when Win3.0 shipped, there were 250 systems on the HCL at product launch.

HIGHLY
CONFIDENTIAL

MS7023380
CONFIDENTIAL

MS-PCA 1113874
CONFIDENTIAL

Win 3.0 Bugs Opened

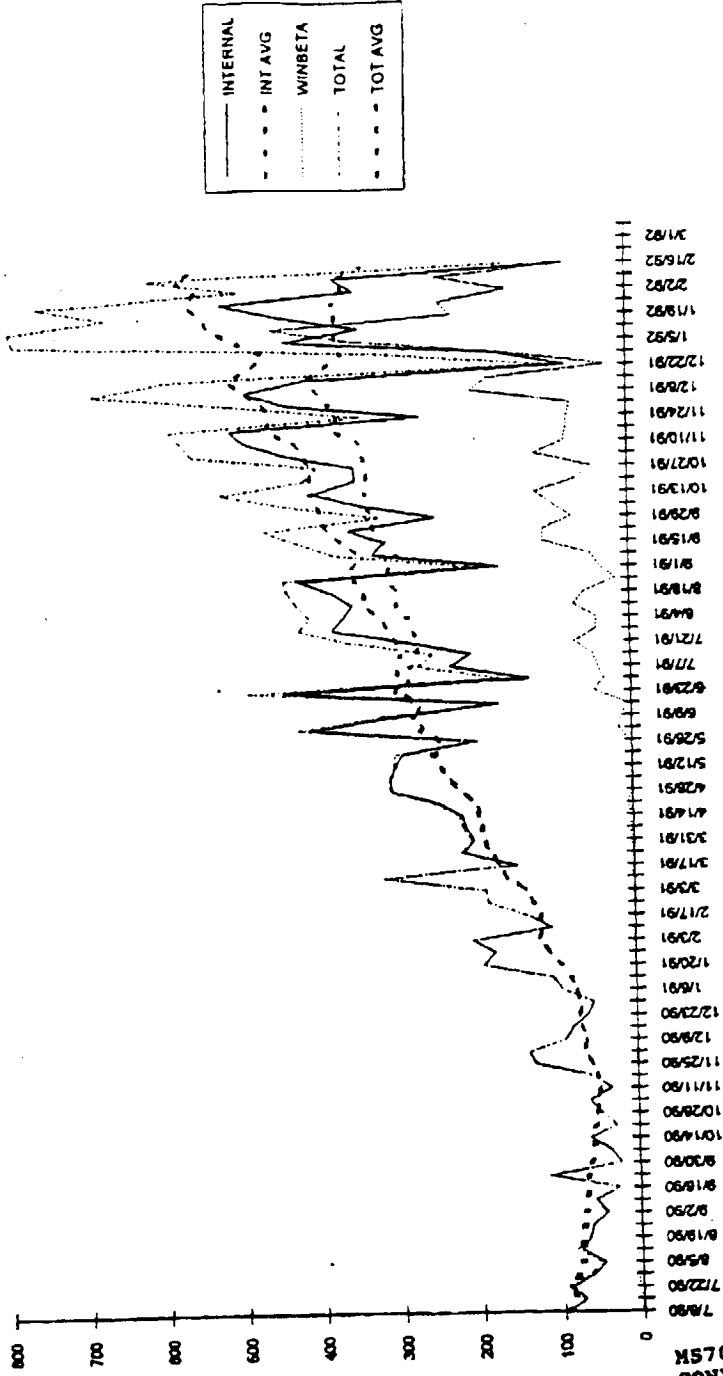


HIGHLY
CONFIDENTIAL

MS7023381
CONFIDENTIAL

MS-PCA 1113875
CONFIDENTIAL

Win 3.1 Bugs Opened

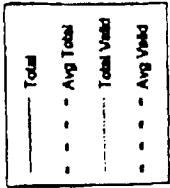
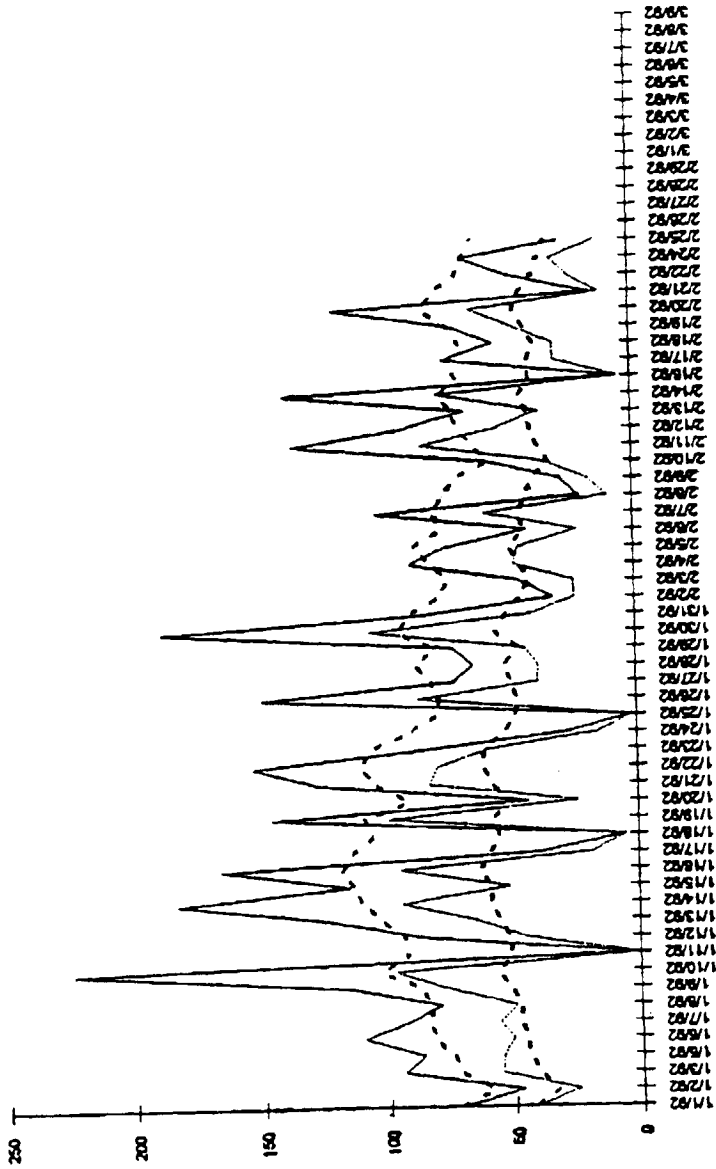


HIGHLY
CONFIDENTIAL

MS7023382
CONFIDENTIAL

MS-PCA 1113876
CONFIDENTIAL

Win 3.1 Bugs Opened

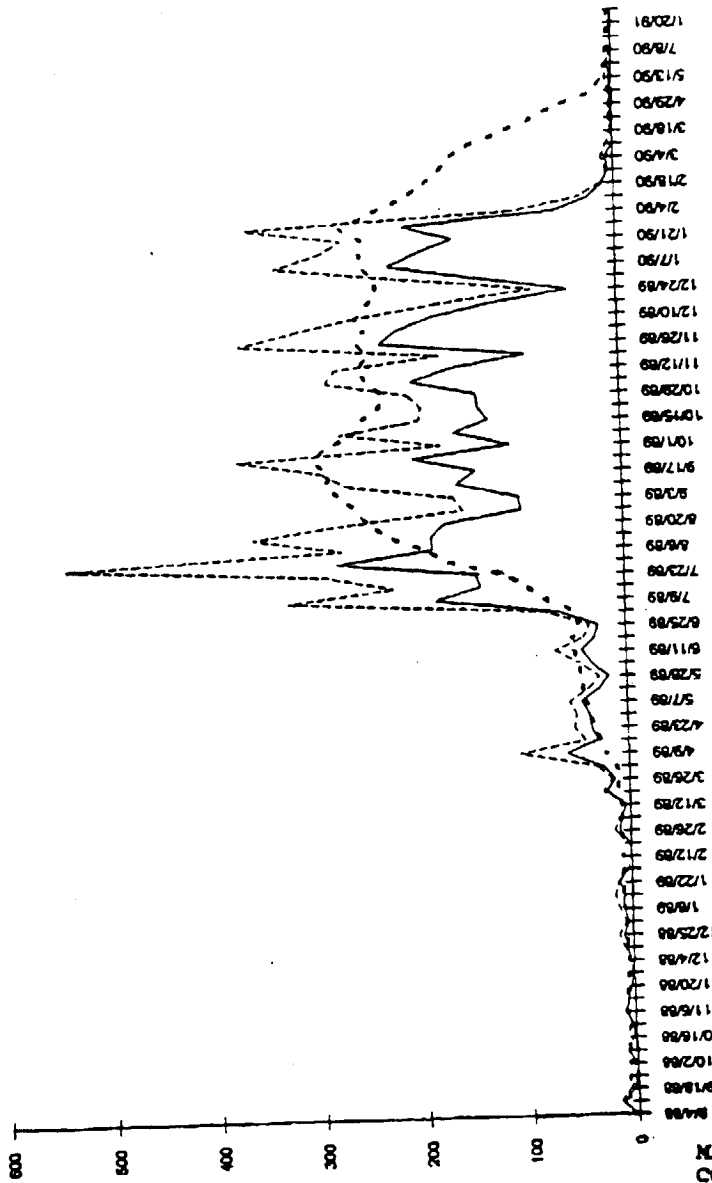


HIGHLY
CONFIDENTIAL

MS7023383
CONFIDENTIAL

MS-PCA 1113877
CONFIDENTIAL

Win 3.0 Bugs Resolved



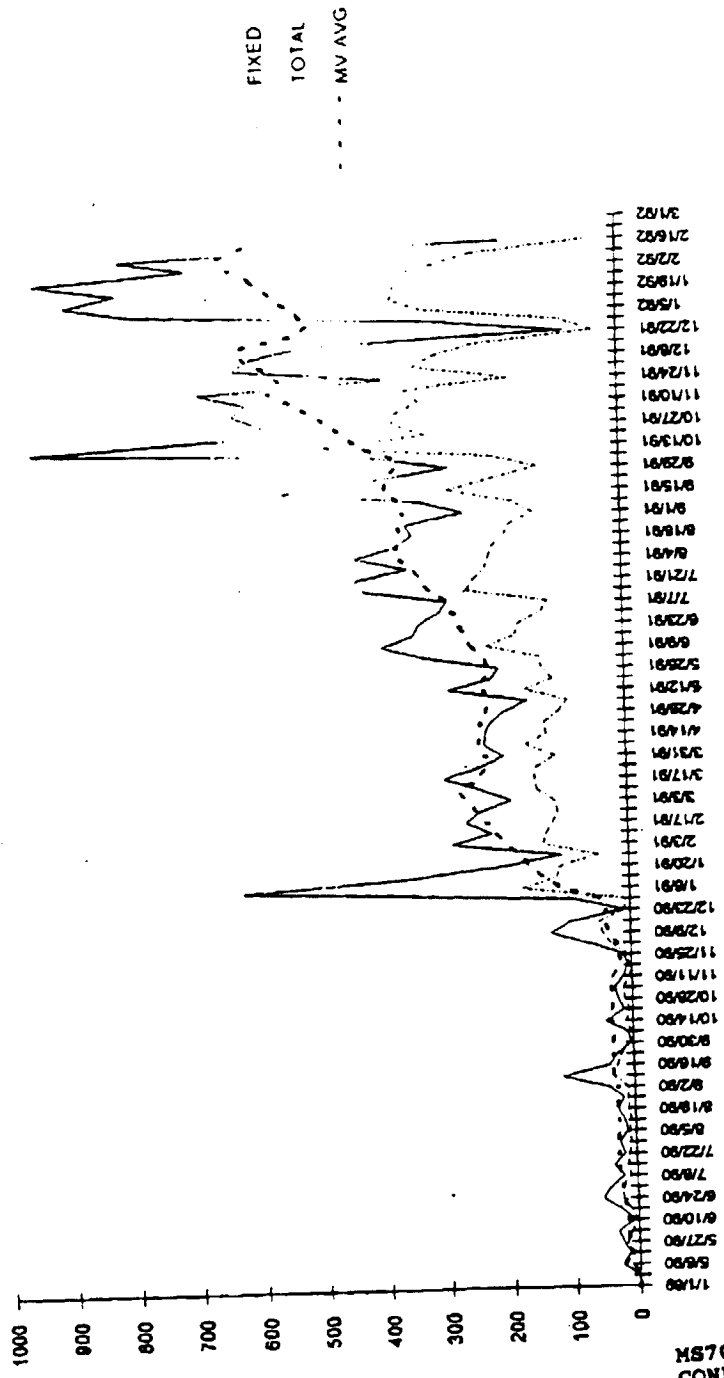
FIXED
Total
MV AVG

HIGHLY
CONFIDENTIAL

MS7023384
CONFIDENTIAL

MS-PCA 1113878
CONFIDENTIAL

Win 3.1 Bugs Resolved

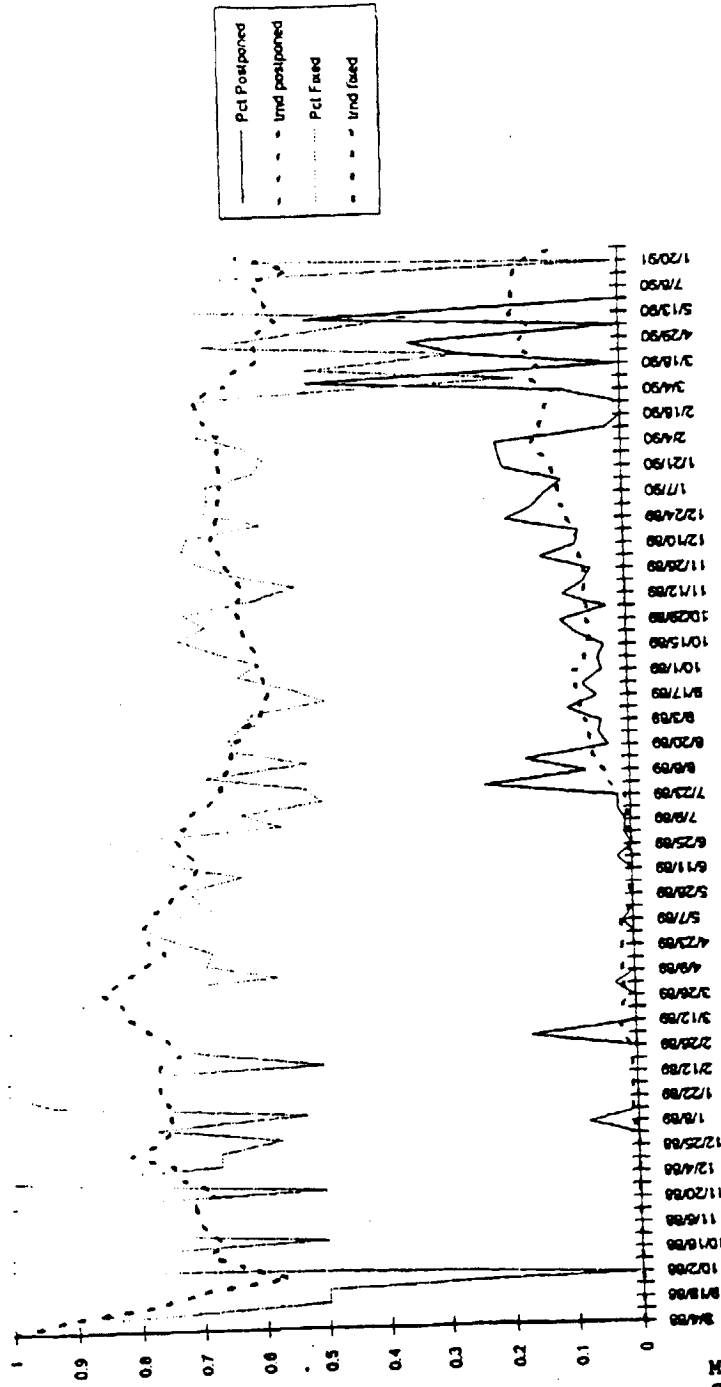


HIGHLY
CONFIDENTIAL

MS7023389
CONFIDENTIAL

MS-PCA 1113879
CONFIDENTIAL

Win 3.0 Bug Resolutions

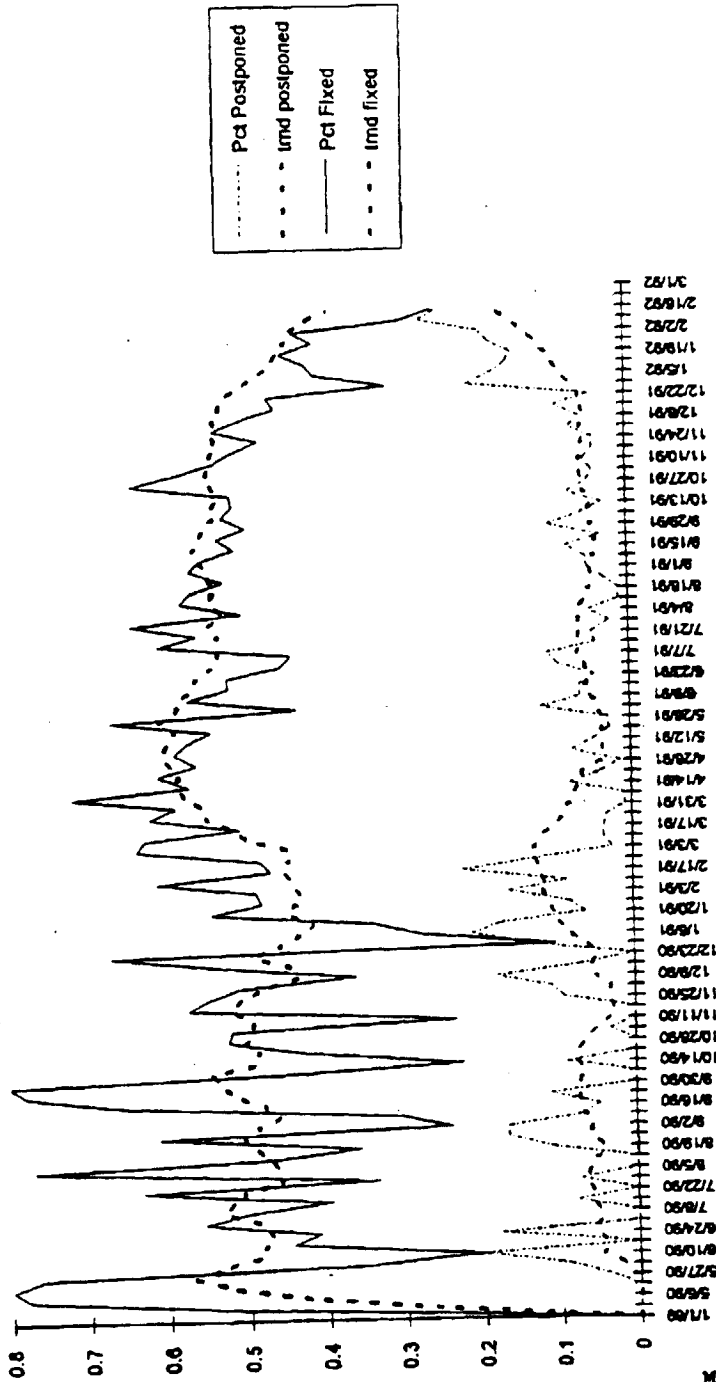


HIGHLY
CONFIDENTIAL

MS7023386
CONFIDENTIAL

MS-PCA 1113880
CONFIDENTIAL

Win 3.1 Bug Resolutions

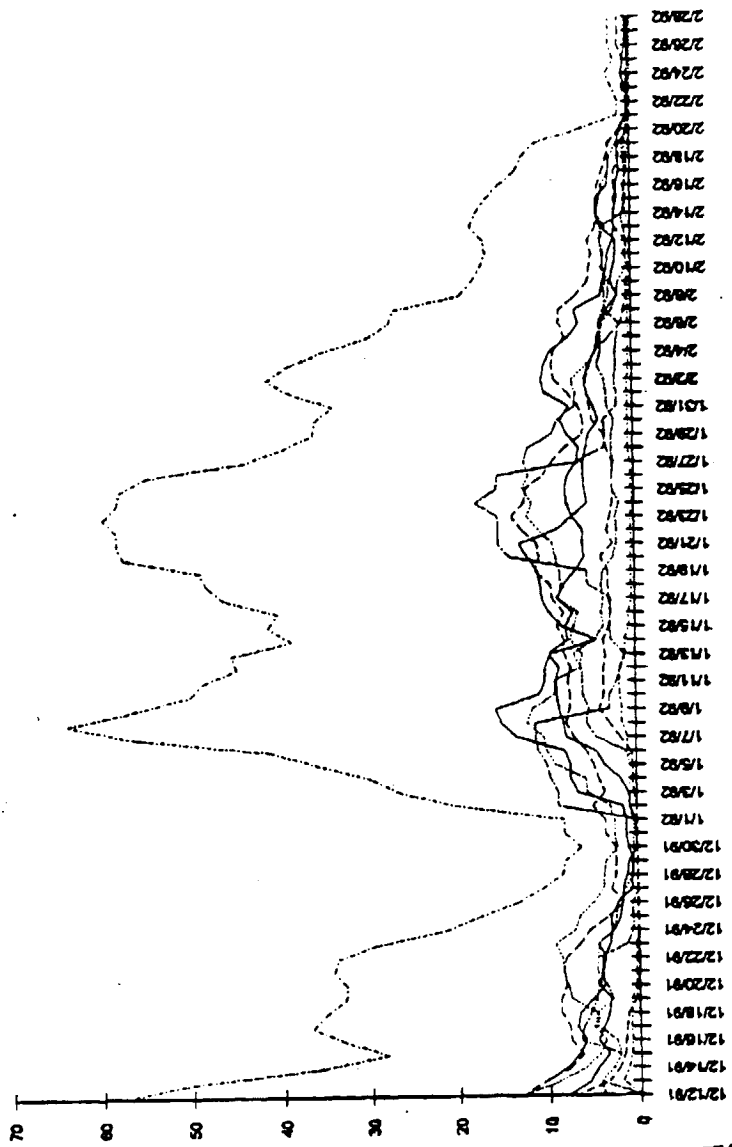


HIGHLY
CONFIDENTIAL

MS7023387
CONFIDENTIAL

MS-PCA 1113881
CONFIDENTIAL

Win 3.1 - Average Daily Source Code Checked In



USER	---
GDI	---
KERNEL	---
DOSX	---
DISPLAY	---
WIN386	---
SMARTDRV	---
SHELL	---
TOTAL	---

HIGHLY
CONFIDENTIAL

MS7023388
CONFIDENTIAL

MS-PCA 1113882
CONFIDENTIAL

Internal Bug traffic

This section covers the bug fixes we've made to RC3 since 2/17.

On the plate for RC3g (not included in numbers)

GDI object private bit (being SMOKED)
Preserving default printer on upgrade (FIXED)
AfterDark TSR (FIXED)
Out of selector/arena headers with Excel 4.0 (being SMOKED)
Winmail printing problem on postscript

RC3f

*GDI.EXE - Bug# 15234 - RemovefontResource font file not found
KRNZ - Basically, if you only have 260-330K free on any 1 MB system, Setup might die
WRITE.EXE - OLE 1.0 OleActivate call, #15437
*WIN386.EXE - Bug# 15304, Problem with FoxPro, random pointer in VMH
SETUP.EXE - minor change to wording for new /C switch (don't do TSR detection)
WINFILES.EXE - File Manager change for Novell net folders, take out net icon on folder
GENDRV.DLL - Fixes for IPG. Color matching on a ps printer
MCISHW.DRV - #bug 6615, Executing KMDI sequencer get info command causes crash

RC3e

EPSON24.DRV - Bug# 15369, No support of 2 bin sheet feeder
EPSON9.DRV - Bug# 15367, No support for 2 bin sheet feeder
*UNIDRV.DLL - Bug# 15384, Epson9 does not retain settings
SOUNDREC.EXE - Bug# 15346, Hard coded strings in SOUNDREC
COURAL.TTF - GP-FAULT in Rasterizer, incorrect coding, missing endif in font
KERNEL - Bug# 15388, segment load failure, share.exe problems
SETUP.EXE - Staker 2.0 - make dual copy of boot files when boot drive is swapped.
SETUP.EXE - TSR detection switch.
CONTROL.INI - Delete install section to force upgrade of drivers..
INTL localization fix
WINGDING.TTF - Remapped Characters to better match with diagsats

RC3d

DDMKL - BUG# 15148, Execute Strings not Freed
15298, PASTE LINK: From Q+E OAEs everytime
GDI.EXE - Bug# 10343 - font substitution bug
T2 memory fragmentation bug
sidebearing bug in rasterizer
Bug# 15338, ATM 2.0 messes up rotated T2 when printing to HP LJ
SetBoundsRect GP-Fault
KenSy's Debug GDI fixes
*PSCRIPT.DRV - Bug# 14946, HP LJ IIIIi Ps driver does not correctly change bins
*SETUP.INF, WIN.SAC, USER.EXE - Bug# 14810, JustWrite problem under RC1
XLAT850.BIN - Bug# 15255, AnsiToOem mapping bug
*PROPRM24.DRV and OKI24.DRV - Bug# 14904, Problem with ProPrinter in draft mode
SPC2.DRV - Bug# 15200, Epson LQ-570: Envelope printing from bin 1 broken

HIGHLY
CONFIDENTIAL

MS7023389
CONFIDENTIAL

MS-PCA 1113883
CONFIDENTIAL

RC3c

OLE - Change internal version stamp
*PAINTJET.DRV - Bug# 11314, Problems with HP Paintjet XL v1.0 & CorelDraw
*GENDRV.DLL - Unable to print in landscape in WinProj 3.0
*SETUP.TPF - Bug# 15240, Error Loading NETAPI.DLL and PMSPL.DLL, incorrect filenames
Add warning for Novell Version 3.21 and add support for novell version 3.26
PBRUSH.EXE - Bug# 14764 Page Setup.Error dialog box appears blank
#14768 Print.Error dialog box appears blank
*WIMOLDAP.MCO - Bug #15244, Problem with Design II for Windows
*COMMDLG.DLL - Multiple selection FileOpen needs NULL Terminator
GDI.EXE - Color option ON fails printing large TT fonts in landscape on PS
POWER.DRV, SL.DLL, VPOWERD.386 - Latest drop from Intel

RC3b

OLE DLLs - # 9072, Get hang on hour glass dropping large file onto write
SUPERVGA.DRV - Bug# 14776, 800x600 supervga device frier LPTtoDP bug
*SCRIPT.DRV - Bug# 15006- Output notepad are printed using tiny font.
SMARTDRV.EXE - APM Fix
*EPSON9.DRV - Bug# 14914, Epson LX-810; 17 cpi fonts not mapping correctly
*SETUP.EXE - Bug# 15107, a textual change in a help screen. Fix spelling error
*WIN386.MCO - Bug# 15142, Error message dialog messed up.
*USER.EXE - Bug# 12084 - ~~xxxxxx~~ server fix
*WIN386.EXE - Bug# 14672, Get garbage reading Floppies in dos box.
*SETUP.TPF - Change minimum space requirements for windows.
Added APPS.HLP, LSL.COM, IPIXOOI.COM
Bug# 14875, Ingres W4GLR.EXE and W4GLR.EXE require [Compat] Setting.
Change COPIWAIT5 Message
WIN.SRC - Bug# 14875, see above
APPS.HLP - New file
*WINDING.TTF - This is the font with drop out control turned off over 84 points,
*COMMDLG.DLL - Print Setup missing driver error
GDI.EXE - BUG# 11539, GetKerningPairs sign extends returned chars
Neg. Ext. Leading bug fix.
.FOT - Changed copyright messages

RC3a

*SYSTEM.DRV - Setup problem on Dos 3.1- Bug#14863
*EGAOK.FON - change resolution to 72*96, font mapping problem for terminal font
*VGAOK.FON - change resolution to 96*96, font mapping problem for terminal font
*WIN386.EXE - Bug #14413, Invalid VxD dynamic link call
Screensavers - Change Font from EKLXV to MS SSERIF.
SMALL*.FON - mark as 3.0 compat
*DRIVERS.CPL - MMBug# 6149, Prompts to Reboot if driver is already present
GDI.EXE - WinProj 1.0 divide by zero trashes windows
*.HLP - Recompiled with the new HC.EXE
*KRNL286 and 386 - Bug# 14975, DBWin crash w/output to com1 at app exit
14978, Exit Windows after App exit, DBWin

* - denotes bug found externally (12 out of 75 or 166).

HIGHLY
CONFIDENTIAL

MS7023390
CONFIDENTIAL

MS-PCA 1113884
CONFIDENTIAL

Total Bug Counts Compared with Win 3.0

	Fixed	Dupe	By Des	NotRep	WontFix	Postpone	Total
Win30	6622	456	574	1155	1084	1722	11613
	57%	4%	5%	10%	9%	15%	
Win31	12027	1690	1992	3412	3219	2269	24609
	49%	7%	8%	14%	13%	9%	

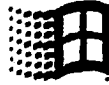
* Note that Win 3.1 has twice as much code as Win 3.0

HIGHLY
CONFIDENTIAL

MS7023391
CONFIDENTIAL

MS-PCA 1113885
CONFIDENTIAL

Windows 3.1
February 27, 1992



C. Application Compatibility

**HIGHLY
CONFIDENTIAL**

**MS7023392
CONFIDENTIAL**

**MS-PCA 1113886
CONFIDENTIAL**

Categories of problems found in Applications

This section is a boil up of the detailed spreadsheet attached. It covers the categories of application problems we found in testing Win 3.1, the number of apps, and the number of known fixes available. (Mostly A or B apps are shown here, but some lower priority apps are included here as well if they fit the problem category.)

To reach the level of app compatibility we needed, we introduced "app hacks" into the system. Apps are identified by module name and the fix is applied to only the ones that need it. A section in WIN.INI is used to describe to the system which app hacks should be applied to which apps.

Category # apps

Linear Printer/Display scaling 5

These apps take the character widths for the printer and linearly scale them for the screen. TT fonts do not scale linearly so character spacing comes out bad on the screen. Printout is fine. This is not a super serious problem, nothing can be done in Windows to fix.

Fonts (asks for wrong font) 8 (2 fixed)

Apps ask for fonts that didn't exist in Win 3.0, so they got a best match. With TT, they get a better match, which isn't always what they want. The end result is that users may see a different font in a dialog box or status bar. Worse case was OnTime 1.0 which already has updated. We can't fix these in the system. (3 of the problem apps are non-AB apps)

Fonts (font mapping) 6 (2 fixed)

Apps are doing screwy things in trying to map fonts, mostly existing problems got worse with Win 3.1 because there are more fonts in the system. We fixed 1 bad WordPerfect problem with an app hack. Nothing more we can do in the system here.

Fonts (random app problem) 17 (3 fixed)

This category is a collection of purely random font bugs in the applications. None are really very bad. The worst app, Finale, already updated. (TT fonts were display in gigantic sizes which screwed up the display). Another example is Freelance can't rotate TT fonts because it only knows how to rotate fonts using the ATM API. (yes, very bad.). There is no general fix in the system we can do to solve these.

Fonts (seeing fonts after upgrade) 2

User doesn't see fonts until a printer setup in the app. These 2 apps "cache" installed font metrics. Can't fix this in the system. This is a problem for WinWord and will generate some PSS calls. (don't know if it was fixed in WinWord 2.0a or not)

**HIGHLY
CONFIDENTIAL**

**MS7023393
CONFIDENTIAL**

**MS-PCA 1113887
CONFIDENTIAL**

Rename of vgafix.fon..... 3 (2 fixed)
Only 3 apps depended on the name "system" to select this font. We changed the name of the fixed pitched system font to vgafix so it didn't collide with the proportional system font. We fixed the problem for 2 apps with an internal substitution table, but can't for the 3rd. Not a serious problem.

ABC Spacing Problems 3 (1 fixed)
Apps not aware of ABC spacing. One problem fixed in WinWord. One problem that can be fixed in the Windows drawtext API, but too risky.

No TT size enumeration 11 (10 fixed)
Apps didn't enumerate sizes for TT fonts because they were incorrectly checking the scalable font bit. We fixed all but 1 with an app hack. This should solve a potential big usability problem.

Redundant TT sizes 5 (2 fixed)
Apps list a single size 4 times for each TT font, 1 for each style. We app hacked it for Visual Basic, but could not for the rest. We can't properly fix this in the system.

Redundant TT enumeration 5
Apps list TT fonts more than once. Two different problems here, either list 4 times each, 1 for each style. Or twice, once because it's a printer font and 1 because it's a screen font. ATM fonts look like device fonts, so they get listed once. We can't properly fix this in the system.

No TT support in driver 5
Apps bundle drivers that don't support TT. Powerpoint and Publishers Power pak are both in the process of updating. 3 of these apps share the Magicorp driver.

Rename fonts 10 (6 fixed)
Renaming Tms Rmn and Helv broke some apps since they hardwired in these names. We fixed 6 with app hacks. The last 4 are really minor problems. The agreement with Lino allows us to enumerate the old font names for compatibility reasons.

Print Banding dependency 4 (3 fixed)
A surprising number of apps counted on there being more than one band, we only use 1 now when memory is available. We fixed 2 with several app hacks. Legacy updated already and fixed their bug.

General Printing 2
Still 1 open issue with and Legacy printing to PCL5 printer. Worst problem here is Freehand doesn't print to Postscript anymore, Aldus hardwired in some dependencies on the old Win 3.0 PS driver. Update is in the works from Aldus.

Renaming Printer Drivers 8

HIGHLY
CONFIDENTIAL

MS7023394
CONFIDENTIAL

MS-PCA 1113888
CONFIDENTIAL

Apps remember the printer names in documents and warn users when they switch devices because page flow can change. We can't fix this in the system without going back to using old driver names instead of new model names. In 2 of the apps, you get a warning at print time that the printer has changed. In 1 app, the name is stored in the templates so the templates must be updated. ADS NetWork Workstation will need to update. There's also an ATM performance problem because the Unidriver reports it's technology as UNIDRV instead of PCL.

Addition of DTP char 129 12

These apps call openfile with an OEM string, they are not suppose to (the api converts ansi to OEM). Since we added new chars to ANSI, things convert which didn't before. This is bad since the user may not be able to open a file without renaming it first. Workaround is to rename the file. Nothing we can do here without taking out the DTP characters.

Z-order changes 3

Minor problems only with the ordering of windows.

MDI Child Window Changes..... 2 (1 fixed)

Minor problem only here. 1 app has already updated to fix.

Help file changes 2

Very minor problems only.

Uses undocumented Calls 8 (1 fixed)

Apps are making random undocumented calls that we don't support for robustness reasons. Results range from minor problems to an app not working. Should look at specific data in the spreadsheet.

Repair..... 24 (4 fixed)

Only minor repair problems remain. The worst app has just updated to fix a lot of repair problems, Arts & Letters. We fixed 2 apps with an app hack since the repaints were bad and the apps were either A or B. Remaining problems are either very minor or are in C or D apps. Note that only 10 of the 24 apps are considered AB apps, 1 of those we fixed with a hack in the system.

Un-initialized dependency 18 (2 fixed)

Good news here is that most all of these problems are in C and D apps. We app hacked 1 app and 2 others have updated already to fix. There still is a crashing bug in WordPerfect File Manager and AmiPro, but there isn't much we can do about these.

Midi Apps that Write to Hardware.... 2

Windows app that directly manage hardware don't mix with the os which does this. Nothing we can do.

**HIGHLY
CONFIDENTIAL**

**MS7023395
CONFIDENTIAL**

**MS-PCA 1113889
CONFIDENTIAL**

Overwriting our Modules 16

This is a pretty ugly area and reflects some serious end user problems, unfortunately there isn't anything we can do about it other than get the apps to update. The most common cases are PC Tools and Norton Destop replacing VMAD.386 with an older version. Another example is where Facelift chains out our display driver with a fake DISPLAY.DRV.

Share.exe (file handle cache)..... 5

The new Win 3.1 file handle cache exposes some bad programming practices. 4 of the problems are install problems, which the user can recover from. The 5th is an app bug which actually happens in Win 3.0.

General Bug Fixes 9 (1 fixed)

These are problems due to fixes to Win 3.0 bugs. We app hacked a Lotus notes problem, the most of the rest are minor. The worst bug is in Pagemaker importing a rotated EPS file.

New 3.1 functionality 13

These are problems caused by new Win 3.1 features. The worse cases here are Norton Desktop, which isn't a full Win 3.1 shell until it updates, but the problems do not prevent use of NDW. The second worse case is CAD will kill an Afterdark password protected screen saver. The new topmost window also causes some problems.

Must Update, "unusable" 29 7 are fixed already

- 0 of these are A apps.
- 10 of these are B apps; 6 have already updated; 4 will very soon (Bookshelf, and hDC Memory Viewer, and Powersoft will update toolhelp.dll)
- 6 are C apps; fixes for 1 is available now.
- 13 are D apps

AB (and B-) apps that must be updated: (10)

- Arts&Letters 3.1 Shipped 3.11 (not officially an AB app, but important)
- Hollywood Shipped 2.0
- Powerbuilder 1.0 planned the day we let them ship toolhlp.dll
- Ontime 1.0 Shipped 1.1. (not officially an AB app, but important)
- hDC MemView 1.0 available when Win 3.1 ships
- Acefile 1.0 Shipped 2.0 (not officially an AB app, but important)
- Faxit 1.53 and 2.0d Already shipped 2.1
- Forest & Trees 2.0a Already shipped 2.0b
- Microsoft Productivity Pak 1.0 available when Win 3.1 ships
- Bookshelf for Windows update planned for next Mfg run, mid-March

HIGHLY
CONFIDENTIAL

MS7021396
CONFIDENTIAL

MS-PCA 1113890
CONFIDENTIAL

CATEGORY.XLS

Category of bug	Bug #	Status	Application	Comment
Redundant TT alias	629		SuperTimes 4	Units alias 8-24 and 8-40 (i.e. tabs) for Symbol font
Redundant TT enumeration	13738		Word Perfect for Windows	Units of fonts, not just font family
Redundant TT enumeration	16005		The Jaguar Designer	Units font entries for each courier name, but 1 also only for others
Redundant TT enumeration	10887		NOCPalApps	Enumerates II fonts twice, once for printer, once for outline
Redundant TT enumeration	13638		ERWHERX	Enumerates TT fonts four times, and for both printer and screen, in the font viewer
Redundant TT enumeration	15137			Same multiple of several values for II symbol
no TT support in driver	7831		Publisher's Power Pak	TT fonts not listed when Pub. Power Pak driver is selected
no TT support in driver	13860		Invent Graphics	Doesn't enumerate TT for Magcorp printer driver, need are ok
no TT support in driver	14067		Hollywood	TT fonts not listed for Magcorp driver
no TT support in driver	14087		Permanon	TT fonts not listed for Magcorp driver
no TT support in driver	9519		Powerpoint	No TT fonts when graphics driver is selected, maps THN to symbol
Runtime fonts	14421	eye fixed	Outline	Which up using MS Serif instead of MS Sans Serif
Runtime fonts	9101	eye fixed	Programmer	Uses E's own Times Roman, screen display changes only
Runtime fonts	8202	eye fixed	Plus for Windows	Uses E's own font mapper - references Hair 8
Runtime fonts	208	eye fixed	Excel	Problem with Excel Tutorial and True Type
Runtime fonts	2438	eye fixed	Spinner Plus	Maps to system font
Runtime fonts	8242		Acadix	Uses install dialog, when the problem really lies
Runtime fonts	8242		Talarco	Uses install dialog, when the problem really lies
Runtime fonts	8242		MacchTee	Uses install dialog, when the problem really lies
Runtime fonts	9501	eye fixed	Powerpoint	Fonts not available font in font list in vcl.at app hook phase - fixed
Runtime fonts	12805	eye fixed	Multitrees, etc.	font unavailability when started - app hook phase
Print Banding dependency	13332	eye fixed	Freedom 1.0	Doesn't print II fonts, will print II on graphics, assumes separate bunch
Print Banding dependency	11228	eye fixed	Freedom 1.0	Won't print II fonts, assumes 1 band only to last only
Print Banding dependency	10573	eye fixed	Freedom 1.0	Won't print at 300 dpi, assumes more than 1 band
Print Banding dependency	9798	eye fixed	Freedom 1.0	Doesn't print on some printers, needs a test band
Print Banding dependency	14572		Freedom 3.0	Won't print TT fonts to HP LJR, no app hook in PCL5 driver
Printing	14647	open?	Freedom 3.0	Not capable of printing to postscript printer (new 3.1 functionality)
Printing	14382		Legacy 2.0	All escape lines print blank text to LJR - works w/ LJR
Print Banding dependency	7004	eye fixed	Word Perfect	Can't print graphics in landscape, assumes 1 graphics band
Print Banding dependency	811604	app fixed	Legacy	Prints blank pages, assumes first band is last band, fixed in new rev
Resolving Printer Drivers	7829		Powerpoint	Warning at doc load time the printer has changed
Resolving Printer Drivers	8100		WordStar	Old names remembered in the language

MS7023397
CONFIDENTIAL

HIGHLY
CONFIDENTIAL

MS-PCA 1113891
CONFIDENTIAL

CATEGORY.XLS

Category of Bug	Bug #	Status	Application	Comment
Fonts (random app problem)	3130		WinWord 1.1e	upper and subscript overlay font
Fonts (random app problem)	651304	app fixed	WinWord 1.1e	Carriage caps wrong for bold, italic and bold italic. Fixed in WinWord 2.07
Fonts (random app problem)	880506	app fixed	WinWord 1.1e	Changing font size is slow. Fixed in WinWord 2.0
Fonts (random app problem)	12867		WordPerfect	Gate continues on bars or semibold or semibold weight
Fonts (random app problem)	11522		WordPerfect	Fixed pitch TT fonts aren't the correct size, depending on the printer
Fonts (random app problem)	11524	app fixed	WordPerfect	displays and prints vector fonts for tv, only on EGA system
Fonts (random app problem)	7480		WordStar for Windows	Lucida math fonts get clipped, scrolling forces repair which corrupts it
Fonts (random app problem)	14516		Novel Multimedia Organizer	of TT only on, get 3 error messages MS Sans Serif is not loaded - don't know why
Fonts (random app problem)	14831	app fixed	Page 2.3	No TT fonts on get inside printers - jobs enumerates only device and raster fonts
Fonts (missing fonts after upgrade)	12614		Fontall & WinWord	Upgrade over 3.0 w/ no printer causes GPF's printing
Fonts (missing fonts after upgrade)	12508		WinWord 2.0	Fonts fail to print after upgrade over 3.0
Reverse of upper/lower	8428	app fixed	WordScan+	Wrong font causes truncated screen font
Reverse of upper/lower	8680	app fixed	Object Vision	Reply on fixed pitch to create a screen area
Reverse of upper/lower	8778	app fixed	Scheduler	Display font very hard to read, much too small
ABC Spacing Problems	8973	app fixed	WinWord 1.1	clip left side of basic descenders. Fixed in WinWord 2.0
ABC Spacing Problems	10257		Word Perfect for Windows	Change letters, WP is not dealing with regular C widths
ABC Spacing Problems	7837	app	MS Money	first letter in line clipped, or last char of right justified clipped - our problem
No TT size enumeration	5054	app fixed	PageMaker 4.0	Not all T2 fonts are listed in PMA some printers
No TT size enumeration	701406	app fixed	Q+E	T2 fonts listed only in 24 points
No TT size enumeration	3121	app fixed	Multistep, etc.	Only one size enumerated T2 Fonts
No TT size enumeration	4108	app fixed	ABC FreeCharter	One point size only for TT. App fonts didn't fit it. Fixed in update
No TT size enumeration	4102	app fixed	Acadent 3.1	HP 88 only show one TT font size
No TT size enumeration	4827	app fixed	JustWrite	line 1 or 2 point sizes wrapped and clipped
No TT size enumeration	4841	app fixed	AccPack	line only one point size wrapped and clipped
No TT size enumeration	5518	app fixed	MG00Draw	No font listed for TT fonts
No TT size enumeration	774	app fixed	CrossTalk	GreenTalk lists only one size for T2 Courier
No TT size enumeration	11054	app fixed	Designar	Selecting new size always reverts to 8
No TT size enumeration	13740	app fixed	Persuasion	Only font enumerated - app hack fixes it
Redundant TT sizes	11171	app fixed	Winpool (sharpeners)	Lists each point size 4 times - also has uninitialized variable, see below
Redundant TT sizes	12050	app fixed	VB	redundant font sizes shown
Redundant TT sizes	14154		Attachmate 3.21	Lists one size four times for courier new
Redundant TT sizes	13203		Vital Signs	lists four entries for each size

MS7023398
CONFIDENTIAL

HIGHLY
CONFIDENTIAL

MS-PCA 1113892
CONFIDENTIAL

CATEGORY.XLS

Category of bug	Bug #	Status	Application	Comment
Linear Printer/Display scaling	7144		Designer 3.1	Text is clipped, appears fractional scaling value, TT is larger
Linear Printer/Display scaling	9005		MS-Works4Win	Screen printer visible in the database module library for screen
Linear Printer/Display scaling	8001		MS-Works4Win	Arial 10pt description clipped in database module
Linear Printer/Display scaling	7384		PowerPoint	Outlier scales table width library for screen window
Linear Printer/Display scaling	8522		PowerPoint	Formatting problems with Times New Roman
Linear Printer/Display scaling	14404		PowerWrite+	Character spacing badly when "display as printout" is on
Fonts (size for wrong font)	12582		American Vets	Diagrams are messed up - fonts are large and bold compared w/ 3.0
Fonts (size for wrong font)	8008		Comwalk	Function key labels and status line fonts are much larger when doc bar open
Fonts (size for wrong font)	7038004	app fixed	OnTime 1.0	Diagrams are messed up - New version Beta
Fonts (size for wrong font)	13702		WEPlus (Outlook)	Aids for any generic FF_SCRIPT font - causes display problems
Fonts (size for wrong font)	7440004	app fixed	WinWord 1.1b	Upper/lower case are same size on EGA, fixed in WinWord 2.0
Fonts (size for wrong font)	12807		WinStar for Windows	Scrollbar has different colors of font
Fonts (size for wrong font)	14835		Irms Workstation	If TT only is on, 2 GB fonts because DCA problem in own font
Fonts (size for wrong font)	8148		Synscan Language Systems	Numbers showing same are smaller in 3.1, app sets for a small font and now gets it
Fonts (char mapping)	14701	app fixed	WinWord 1.1a	Whitings not displayed properly
Fonts (font mapping)	7553		Charisma	Textfont font is distorted, other probs in Win 3.0
Fonts (font mapping)	8887		Designer 3.1	Random font mapping, some other problems in Win 3.0
Fonts (font mapping)	14121		Designer 3.1	Build links embedded vertically printing to PostScript
Fonts (font mapping)	13216		Mathematica	Changes TMR to MS Serif (beta version of mathematical)
Fonts (font mapping)	11208		GCWin	Font substitution problem Arial font for Arial - there's a whfl work around
Fonts (font mapping)	10280	app fixed	WordPerfect	Font mapping was wrong, courier now mapped to arial
Fonts (random app problem)	13947		GCWin	screen not completely erased for TT fonts (ensures whole char is erased)
Fonts (random app problem)	8607		Objectation 2.0	Prints TT fonts smaller than they should be - use positive thought
Fonts (random app problem)	6653804		Kardam 1.1	Print screen in LHM w/ TT results in garbage
Fonts (random app problem)	810704		AurPro	Inserted characters are off when typing and display as printed is on
Fonts (random app problem)	10089		AurPro	TT fonts don't relate correctly
Fonts (random app problem)	11053		Designer 3.1	Out and paste alpha 12 fonts, Set/FontAlign records not used - designer 4.0 fixes
Fonts (random app problem)	1522		Excel 3.0a	Library have leading space at 270deg. rotation
Fonts (random app problem)	8201	app fixed	Freelance	App passes font width data, so screen fonts are holed
Fonts (random app problem)	13941		Legacy 1.1	Can't rotate TT fonts - holed the ATM App's to do rotated text
Fonts (random app problem)	2781		MS-Works4Win	Can't print rotated courier new fonts on hpdd
Fonts (random app problem)	1753		PageMaker	Font leading problems with HP Series III driver
Fonts (random app problem)	4782		Powerpal	TT: Rotated underline and underline aren't solid in PMA
Fonts (random app problem)	810504		Powerpal	TT/Winform at some point does down() because of PS printer

HIGHLY
CONFIDENTIAL

MS7023399
CONFIDENTIAL

MS-PCA 1113893
CONFIDENTIAL

CATEGORY.XLS

Category of bug	Bug #	Status	Application	Comment
Remaining Printer Drivers	64480d		Printers	The app can't download software to P8 printers
Remaining Printer Drivers	7		Programmer	Warning of print type about the printer being different
Remaining Printer Drivers	207494e		AOS: Network Workstation	Can't rename printers to description names anymore, update needed
Remaining Printer Drivers	7628		PFS: Works	usual use CP to exit landscape if >1 printer, calls driver w/ module name
Remaining Printer Drivers	9620		Persuasion	Can't find Postscript even if it's the default, warning issued
Remaining Printer Drivers	13658		ATM 2.0	Prints some ATM forms as graphics instead of text
Addition of DTP char 129	9090		Chemica 2.1	Can't open or change directory
Addition of DTP char 129	9090		AntiPro 2.0	Error message File doesn't exist
Addition of DTP char 129	9090		MCX Showshow 2.3	Cannot open the FILE name
Addition of DTP char 129	9100		Programmer 4.0	Total return - addition of dir chars is just one of the causes
Addition of DTP char 129	13658		Hollywood 1.02	Can't envelope in dir w/ alt+150 - passes OEM chars to openfile
Addition of DTP char 129	13078		3D Charts to Go	alt+168 not correct on save - passes OEM chars to openfile
Addition of DTP char 129	7122		Merlot Desktop	cannot copy file w/ extended character in name
Addition of DTP char 129	10736		ABC Fluorimeter	passes OEM chars to openfile
Addition of DTP char 129	10736		ConviDraw 2.0	passes OEM chars to openfile
Addition of DTP char 129	14290		Excel 3.0e	Can't install localized version as install program char'n open files w/ extended chars
Addition of DTP char 129	14922		CA Campaign	Can't envelope w/ extended char
Addition of DTP char 129	14923		Crystal Accounting	Help doesn't work if it's in a dir w/ extended chars in dir name
Z-order changes	7121		NDDesktop	Resizes only finishes at end of install
Z-order changes	12236		MacroMailAction	Resizes only finishes at end of install
Z-order changes	14537		VB 1.0	Alt-F8 doesn't cycle through VB windows correctly
MDI Child Window Changes	10249		Fennel Trees	Always sets to save changes - file dirty is incorrect in 3.1
MDI Child Window Changes	6824	app fixed	Quicklan 1.0	Quicklan base focus on alert w/ shift - NDM, fixed in 1.1
Help file changes	5420		Quicklan	requires if you hold down the mouse button on popups
Help file changes	8723		Wings	Help during install broken - win3.0 help would ignore drive change req
Uses undocumented Calls	11810		VB	Can't see icons in main area window, using invalid message parameters
Uses undocumented Calls	10512	app fixed	Acollis 1.0	Later version (latest upgrade) fixes - can't enter dates in new data fields
Uses undocumented Calls	10664	app will fix	Horizon Desktop 1.0	Subprocess desktop software takes 2 tries to run icon functions
Uses undocumented Calls	11068	app will fix	PC-XView for Windows	Doesn't work in Win 3.1, Mouse driver (required) structure grew
Uses undocumented Calls	8502		Xtwin 4.0	not recognized as X server, Mouse driver (required) structure grew
Uses undocumented Calls	10344		Freehand 3.0	Crashes in the toolbar - uses uncod'd index in SelfWindowWord
Uses undocumented Calls	37010a		OSFrame	Subprocess of the windows

HIGHLY
CONFIDENTIAL

MS7023400
CONFIDENTIAL

MS-PCA 1113894
CONFIDENTIAL

CATEGORY.XLS

Category of bug	Bug #	Status	Application	Comment
Uses undocumented Code	13007		Freelance	Arrange align is missing graphics - uses WM_SETTEXT incorrectly
Repair (issue objects)	1417	app fixed	ArchiLiners 3.1	Bad repaint problems, fixed in a new rev
Repair (method requests)	1487	app fixed	ArchiLiners 3.1	Doesn't work of screen when the Alt+DnT, fixed in new rev
Repair (T)	2060/2061	app fixed	ArchiLiners 3.1	Clip-art items not drawn correctly
Repair (T)	11428	app fixed	Picture Wizard v1.012	Clip-art items not drawn correctly
Repair (T)	1825/2061	app fixed	Picture Wizard	Part of ArchiLiners. Screen doesn't repaint after reaching an object
Repair	4460	app fixed	Paint 2.3	Toolbar doesn't repaint
Repair (very minor)		app will fix	MS Mail for the PC 2.1	OK button draws badly, app repains on Win 3.0 bug
Repair (very minor)	10111	app will fix	MSX Draw	Toolbars doesn't repaint the first time menu covers it
Repair	10187	app will fix	WinWorks	Frames are drawn differently in 3.1 - the BS for window bar isn't repainted
Repairs - NCPAINT differences	9424		WinMail	Scroll bars don't redraw properly
Repair	1881/2061		QuickShow	Scroll bars wrong color
Repair	9103	app fixed	Critical Presenta	Tool Window doesn't appear
Repair	2084/2061		Carving/Paint 7.0	Click leaves blank notes
Repair	8628	app will fix	WinWorks	Fixed problems of CBT - windows is updating
Repair (very minor)	13069		Freelance	Tools user dialog minor problems
Repair	13538		Turbo Pascal for Win	Toolbars repaint problems - parameter validation causes the difference
Repair	5977		MP Chess/MSL	small child window in bottom right corner isn't completely drawn
Repair	14667		Weather Win	vertical scroll bar doesn't repaint changing from draft to edit mode
Repair	14473	app	WordStar Win	Stripped replace dialog doesn't repaint - it's our problem
Repair (minor)	14368		CA Compile	Dialog box black - caused by paint optimization in button control code
Repair	13185		Micro Cauler	Vertical lines in terminal window - caused by bad font they're shipping
Repair	13128		Turbo C++ for Win	Won't install if icon is under an app - caused by loose tempdir usage
Repair (minor)	13456		Splinters	Can't maximize it
Repair	11427		PC Tools CP/Launcher 1.1	System menu button has repaint problems, they expect more repaint messages
Repair (minor)	14157	app will fix	Excel 3.0a	Title bar scrollbar has repaint problems, very rare
Repair (very minor)	43708/2061		VB 1.0	scroll thumb not aligned - don't know why
Repair	15248		Background 0.06 (sharpen)	dots doesn't repaint starting new game - don't know why
Repair	15187		Windows Tools	Buttons are empty - uses LBS_HOREDRAW instead of WM_SETREDRAW
Repair	15182		TimeKeeper	redraw prob starting time in time report window - passes invalid brushes
Repair	15324		Coproc Powerplay	file list box not repainted correctly - don't know why
Un-fulfilled dependency	4514		Mallman (buyon)	Can't maintain private address book
Un-fulfilled dependency	9608	app fixed	Acadell 1.0	GP fails in Edit Edit View Record
Un-fulfilled dependency	4187		Quasi	GP fails importing objects file
Un-fulfilled dependency	4180		Quasi	GP fails importing csv files

HIGHLY
CONFIDENTIAL

MS7021401
CONFIDENTIAL

MS-PCA 1113895
CONFIDENTIAL

CATEGORY.XLS

Category of bug	Bug #	Status	Application	Comment
Un-initialized dependency	4173		Quest	GP fails reporting files
Un-initialized dependency	10172		SciWinz	Help doesn't work
Un-initialized dependency	10611	eye fixed	Compton's Mail Encyclopedia	Uninitialized Windows.cblWinEdm
Un-initialized dependency	11171		Winpost 3.0	Crashes w/ back - Windows 3 Screens (sharware)
Un-initialized dependency	10581		InterMail	GP fails when run w/ After Dark screen saver
Un-initialized dependency	11857		Windows 1.00	Report problems, parameter validation
Un-initialized dependency	48390d		WinEd (Shareware, right?)	Error reading file header
Un-initialized dependency	70300d	app fixed	Forest & Trees 2.0a	GP fails on file open after file open
Un-initialized dependency	11346	app will fix	WordPerfect for Windows	GP fails in file load in the WP File Manager
Un-initialized dependency	13500		Navis Beacon Teachman Typing	Routing port doesn't work
Un-initialized dependency	300		WinStash	GP fails - looks like file unreadable from the bug report
Un-initialized dependency	7291		IBM's Current	GP's on a specific file
Un-initialized dependency	14015		AmPro	Still-duplicated causes gp bug
Un-initialized dependency??	12813		WordStar for Win	GP fails first time being started after upgrade from 3.0 - don't know why
Un-initialized dependency	7700		Hollywood	Crash, stopping to program, loading of sample file
Un-initialized dependency??	5363		Gaily Windows	GP starting fails search
Un-initialized dependency	9050		DeDot 3	Deep system resources by 80% - uninitialized class extra words field
Mid Apps that Write to Hardware	10441		Curtain Call	Crashes our drivers, so they can't play some files
Mid Apps that Write to Hardware	11153		Jukebox	Jukebox was corrupt w/ Soundblaster 1.5. The other version works
Overwriting our Modules	10583		Initiator	Overwrites HPPCLSA
Overwriting our Modules	11410		PC Tools	V4L 308
Overwriting our Modules	12181		Kolm Toolkit 1.2	V4L 308
Overwriting our Modules	8132		Monologue for Win	vpd 308
Overwriting our Modules	12507		Facsimil	winfax.drv (problems w/ matrix display drivers)
Overwriting our Modules	12818	app will fix	HP New Wave	All MS-DOS app support is broken
Overwriting our Modules	14225	app will fix	Norton Desktop	Replaces winmsd VxD
Overwriting our Modules	5189		Demo version Am! Pro 2.0	replaces shd.dll - causes lots of problems
Overwriting our Modules	14198		Acropolis Accounting	overwrites common dialog
Overwriting our Modules	12581		Carbon Copy	overwrites drv
Overwriting our Modules	15247		Elara 1.1 (Shareware)	Replaces the windows logo - makes it so you can't run Win 3.1
Overwriting our Modules	15195		WinSnap	Copies a 3.0 package to the system - install doesn't work
Overwriting our Modules	15280		Facsimil	display drv
Overwriting our Modules	15280		Publisher's Powerpost	display drv
Overwriting our Modules	15280		HP Initiator	display drv
Overwriting our Modules	641680d		Foot	comm.drv-accom.drv - makes it so you can't print to com1

HIGHLY
CONFIDENTIAL

MS7023402
CONFIDENTIAL

MS-PCA 1113896
CONFIDENTIAL

CATEGORY.XLS

Category of bug	Bug #	Status	Application	Comment
Share use (file handle cache)	12894		JustWrite	Sharing violation. No GP fault. (visual shield), file handle cache
Share use (file handle cache)	10928		OnTarget	Sharing violation. No GP fault. (visual shield), file handle cache
Share use (file handle cache)	14098		MicroCrawler	Sharing violation. app deletes its own EXE. file handle cache
Share use	12782		Penguin WinCache	Can't thread because it keeps bit files open across WinFileCacheProcsUsing cache
Share use	14888		Veritas Publisher 4.0	Sharing violation sending file w/ extended chere in name, happens in WIN 3.0
General Bug Fixes	3428		Designer and Charlene	setup doesn't find these 2 apps since modulin header is wrong
General Bug Fixes	4631		WEP II	Lessen icon when attributes deleted, just file list shows
General Bug Fixes	4883		Pro Window Maker	Quick menu don't work, WM_COMMAND is passed rather than sent as it was in 3.0
General Bug Fixes	13099		Excel	TTY other changed course resolution, causing printing problems
General Bug Fixes	13508		WinWorks	TTY other changed course resolution, causing printing problems
General Bug Fixes	13800		Merix Tablet Mouse	GP fault - matches the stack limit, which was incorrectly set in 3.0.
General Bug Fixes	14020		VB 1.0	Double click generates 2 of end of click - relies on 3.0 message order
General Bug Fixes	7114	eye bad	Lexus Notes 2.1	Pull down list boxes are hidden - app track files - caused by 3.0 bug fix
General Bug Fixes	13885		Programmer 4	EPS files not rotated correctly - caused by case-calls bug fix
New 3.1 functionality	117		Productivity Pack	regress on Win 3.0 shell
New 3.1 functionality	10829		WinWorks	Doesn't use old servicing del correctly, not all listed
New 3.1 functionality	10188		WinWorks	Doesn't use old servicing del correctly, not all listed
New 3.1 functionality	13003		ArtBuilder	Pull up dialog box when opening data base due to DDE initiate req
New 3.1 functionality	95584de		Borland C 3.0	WinAPI utility gives call to undefined dynamic - shipped early toohelp
New 3.1 functionality	14714		Norton Desktop	Minimize and close not in path causes hang on exit, NDDM not a Win 3.1 shell
New 3.1 functionality	14675	app will fix	Font 2.15	Can't email file - comms/buffer=0 base problem
New 3.1 functionality	14498		Adherent 2.0	Password protection doesn't work on local reboot
New 3.1 functionality	14949		WEP III	Printing during boot mouse screws up printing for them
New 3.1 functionality	9104		CA Cricket Presents	don't show 'Y' at ATM fonts - app has its own fonts
New 3.1 functionality	15000		Excel 3.0a	Excel can't recognize new paper sizes - message up printing to the new ones
New 3.1 functionality	14770		AfterDark 1.0	Not aware of topmost windows
New 3.1 functionality	15394		MS Project 1.0	Not aware of topmost windows - causes repeat problems in tutorial
New 3.1 functionality	5529		Publisher's Powerpak	Options button greyed in powerpak print dialog
Must Update, unusable	14117	updated	ArtMatters 3.1	Bad repeat problems, fixed in a new rev
Must Update, unusable	7880M	updated	Hollywood	Divide by zero error at startup, update 1.0x2 from charls fixes this
Must Update, unusable	8680M		Adobe Illustrator	grab GDI data segment (no status of update, PC Works says 0192)
Must Update, unusable	7641		Adobe TypeAlign	patches GDI code segments
Must Update, unusable	1008		Microsoft Productivity Pak 1.0	fills on message sequences for shell simulation (update planned)

MS7023403
CONFIDENTIAL

HIGHLY
CONFIDENTIAL

MS-PCA 1113897
CONFIDENTIAL

CATEGORY.XLS

Category of bug	Bug #	Status	Application	Comment
Must Update, unusable	7527		Wind for Sound	patching entry points in USER to map events to source
Must Update, unusable	7728		PowerSuite 1.0 (P/16/81)	stripped permissions version of bootup.dl, ordinals changed since then.
Must Update, unusable	72800d	updated	Ordine 1.0 (1.1 Beta)	sets for big font files, new font's etc.
Must Update, unusable	8004		NDG MenuView 1.0	Depends on memory structures which have changed
Must Update, unusable	10719		NDG MenuView 1.0	Garbled display due to added 3.1 modules
Must Update, unusable	8648		NDG MenuView 1.0	Display problems as well
Must Update, unusable	8112		IconDoll	Uses program's icon windows, which no longer exist in Win 3.1
Must Update, unusable	8028		Usher 1.4a (Shareware)	Later version beta
Must Update, unusable	8116	updated	Acuffis 1.0	Later version beta
Must Update, unusable	8029	updated	Acuffis 1.0	GP Fault in E.G.E.B View Record
Must Update, unusable	11316	updated	Fast 1.53 and 2.04	Later version beta
Must Update, unusable	14629		Amateur Plus for Windows	GP fault when balancing account
Must Update, unusable	14630		ScanView 1.0	GP's
Must Update, unusable	48380d		Winoff (Shareware?)	Can't open GP's
Must Update, unusable	1291		Launch (Shareware)	GP faults - used undocumented calls and is passing bad parameters
Must Update, unusable	70060d		Format & Trim 2.0a	GP faults on file name after file open
Must Update, unusable	40708d	updated	Bookshelf for Windows	GP faults editing subpath (can be worked around, not by joe user)
Must Update, unusable	13989		IBM PC3270 for Windows	Winoff install - don't know why (updating will work)
Must Update, unusable	13989		IBM PC3270 for Windows	Missing part of program doesn't work - this is the main part of the app
Must Update, unusable	13317		Leads 2000 v. 1.7	GP's after sign on - don't know why
Must Update, unusable	300		WinSketch	GP Faults - locale file is unusable from the bug report
Must Update, unusable	13463		Checkit 3.0	Incompatible w/ Win 3.1 term300 - works w/ DOS and win 3.0's
Must Update, unusable	13481		Agora	Not the administrative problem - doesn't print, all kinds of stuff
Must Update, unusable	6302	eye bnd	Novell 4.0	Uses undocumented calls - isn't recognized as an x server
Must Update, unusable	63078d		Blue Sky Windowmaker Pro	UIA's handling - don't know why
Must Update, unusable	15299		RSC Showcase Vista	System locks on query - don't know why
Must Update, unusable	15165		Compressed Post (Check entry)	Large system memory any app when the clock is running
Must Update, unusable	20749d		ADS: Network Workstation	Remembering printer drivers makes it so this software can't be updated to 3.1.
Must Update, unusable	58078d		GoldMine Animation Works 1.01	File dialog boxes will accept integer input - don't know why

HIGHLY
CONFIDENTIAL

MS7023404
CONFIDENTIAL

MS-PCA 1113898
CONFIDENTIAL

Internal Test status for AB Apps

These are the results from \\pryex\user\testing\results\lavppa\current\staged.xls. A * after the bug # indicates the problem also occurs under 3.0.

A LIST APPLICATIONS :

App Name	% att	% Pass	Bld
ATN 1.10	100%	100%	rc1
ATN 2.0	100%	100%	rc1
Aldus PM 4.0	100%	100%	rc3
AMI Pro 2.0	100%	98%	rc3
Charisma	100%	100%	rc3
CorelDraw 2.0	100%	100%	rc2
CorelDraw 2.01	100%	100%	rc3
Designer 3.1	100%	100%	rc3
NDW	100%	91%	rc3
DRAW 4 Win 3.0	100%	100%	rc3
Excel 3.0a	100%	100%	rc3
HarvardGraph	100%	97%	rc2
Lotus 123W	100%	100%	rc2
MS Works4Win	100%	98%	rc3
Persuasion	100%	97%	rc3
PowerPoint	100%	94%	rc3
Pulse	48%	100%	rc2
Quicken 1.0	100%	100%	rc3
Quicken 1.01	100%	100%	rc2
WinProJ	100%	100%	rc3
Word 4 Win1.1A	100%	100%	rc3
Word 4 Win 2.0	100%	98%	rc3
Word Perfect	100%	100%	rc3

14738 PP: Paste text into Paintbrush from AmiPro, comes out as icon.
 14664* WF: GP Fault after insufficient memory msg
 7121 WF: Readme only flashes at end of install
 7122 WF: Can't copy file w/ ext char in name
 10864 WF: Takes 2 tries to run icon functions
 14357* WF: Courier New Bold Italic rotates badly, same thing with ATM.
 8856 WF: Status Windows don't stay on top in Wizards (app will fix)
 9081 WF: Linear printer/display scaling - bad kerning
 9081 WF: Linear printer/display scaling - causes clipped descenders
 9519 WF: Outliner display problems - linear printer/display scaling
 9519 WF: sometimes maps tnr to symbol/zapf dingbats, genigraphics driver (PowerPoint.3)
 14738 PP: Paste text into Paintbrush from WinWord, comes out as icon.

MS7023405
 CONFIDENTIAL

HIGHLY
 CONFIDENTIAL

MS-PCA 1113899
 CONFIDENTIAL

B LIST APPLICATIONS:

App Name	9att	9Pass	Bld
3-D Charts2Go	1000	930	rc2
ABC Flow Chart	1000	1000	rc1
Actor Pro 3.1	1000	1000	rc1
Actor Pro 4.0	1000	1000	rc1
ATM 1.15	1000	1000	rc2
After Dark	1000	1000	rc3
AutoCad	1000	970	rc2
Backup 7.1	1000	1000	rc3
CA-Compete	1000	970	rc3
cc:Mail	1000	1000	rc3
CrossTalk 1.2	1000	1000	71
Crystal	1000	1000	rc1
Da Vinci email	1000	980	rc2
FarSide Cal	1000	1000	rc3
Faxit 2.15	1000	920	rc2
Forest & Trees	1000	1000	rc3
FormBase	1000	1000	rc3
Freehand	1000	1000	rc3
FreeLance	1000	940	rc1
Grammatik 2.0	1000	1000	rc1
HDC Express	1000	1000	rc2
Hwood 1.0v2/2.0	1000	930	rc2
HP Intellifont	1000	1000	rc2
Image-In(Color)	100	1000	rc2
Just Write	1000	1000	rc3
MacInTax	1000	1000	71
MacroMindAction	1000	970	rc2
Mathematica	1000	960	rc3
MS Bookshelf'91	1000	970	rc2
MS Money	1000	980	rc3
MS Publisher	1000	1000	rc3

12987 BD: Only displays one TT point size

14517* WF: GFP selecting dde.export second time to Excel

14922 WF: Can't open/save w/ some extended chars

14303* WF: GP attaching a spreadsheet open in Excel

13752* WF: GP attaching a file and sending to multiple alias'

14575 WF: Can't send fax (adding comxbuffer=0 fixes)

13999 PP: Tools.user setup dialog, minor repaint problems

13997 WF: Arrange.align missing graphics

13941 WF: Problems rotating TT fonts, uses ATM apls

13950 WF: Can't open/save in dir w/ alt156

14967 WF: Some T2 plain/bold = italic

12236 WF: Readme doesn't display during install

13218 WF: Maps bold TNR to MS Serif after Arial

14741 WF: Always uses default printer

7837 PP: Clips letters w/ Hppcl5a

HIGHLY
CONFIDENTIAL

MS7023406
CONFIDENTIAL

MS-PCA 1113900
CONFIDENTIAL

MS Online	1000	1000	rc2
MS Mail 2.1e	1000	1000	rc3
MS Mail 3.0B	1000	1000	rc3
NBI Legacy 2.0	1000	980	rc3
Notes 2.1	1000	1000	rc3
Obj Vision 2.0	1000	1000	rc1
On Target1.0.2	1000	990	rc2
On Time 1.1	1000	1000	rc2
Packrat 4.0	1000	1000	rc2
PFS WinWorks	1000	980	rc2
Pict Pub	1000	1000	rc2
Pixie 2.3	1000	970	rc3
PowerBuilder	1000	1000	101
ProWrite Plus	1000	980	rc3
Quick C/Win	1000	1000	101
Q & E (2.6.5)	1000	1000	rc3
SQL Win 2.0	1000	1000	rc3
SQL Win 3.0	1000	1000	rc3
Sprbase 4 (1.2)	1000	1000	rc2
Sprbase 4 (Lan)	1000	1000	rc1
ToolBook	1000	1000	101
TP/ Windows	800	850	71
Turbo Tax	1000	1000	rc3
VenPub 3.0	1000	1000	rc2
VenPub 4.0	1000	1000	rc3
Visual Basic	1000	1000	101
WEP 1	1000	970	rc2
WEP 2	1000	970	rc3
WEP 3	1000	970	rc3
WordStar 4 Win	1000	1000	rc3
Zsoft PubBrush	1000	1000	rc2

14362 PF: Sample files print blank to hppcl5a

9680 WF: Repaint problem in hangman sample
 9907 WF: Prints TT fonts 1-2 pts too small

10887 WF: Sharing violation opening readme at end of install

8009 BD: Font mapping problems w/ Hppcl5a
 7822* WF: Spt TT fonts don't space correctly (probs with ATM)
 7826 WF: Doesn't print in landscape, must use control panel
 8396* WF: Doesn't reformat document when printer is changed

14931 WF: No TT fonts for certain printers (should be FIXED by now)

14494 WF: Bad kerning w/ arial 18 pt.

9071 WF: Exiting debugger -> mouse problems, Borland must update WINDEBUG
 13536 WF: Status bar doesn't update properly

4631 WF: No icon when minimized for Idlewild
 4631 WF: No icon when minimized for Idlewild
 4631 WF: No icon when minimized for Idlewild

HIGHLY
CONFIDENTIAL

MS7023407
CONFIDENTIAL

MS-PCA 1113901
CONFIDENTIAL

Windows 3.1 Application Compatibility

I. Applications that work - no known problems

Tested in Etern	Tested by ISV's
	Top Priority 1.01
AS AndFax Simply Accounting	Acropolis Accounting 1.0
AS Actor Professional 3.1	Address Manager 1.1B
AS Actor Professional 4.0	Click Art
Adobe Streamline 1.1	Command Post 1.0
Account 3.1	Conversion Artist 1.02
Ashlar ValPac	Desktop Stereo 1.8
AS AutoCad for Windows	Disk Point 1.3
Birstrom Family	Easy ABC 3.20.12
Calendar Maker PC	Estimating and Invoicing 4.0
AS cc: Mail	ExploreNet 3000/KnowledgeNet 4.0
Color Lab	FOXPLO 2.0
Current Grammar	Graphic Server SDK 3.0
DataShaper	Icon Creator 1.0
AS De Vinci email	Icon Pak I 1.0
Danger Club	Icon Pak II 1.3
DrawCAD for Windows	Jet Fax 1.12
AS Draw for Windows 3.0	Juggler 1.0 Beta 2
AS FarZide Calendar	KalindaKuhon
AS FormBase for Windows	Key Parts for Windows 1.0
FullShot 1.0	Metz Lock 3.1a
AS Grammatik 2.0	Milstones, Etc. 2.0
AS HDIC Express	PrintCombo 2.5
Icon 3000 Plus	Q+B Database Library 1.03
Image Prep	QualType Fonts 3.1
Image Wizard	RFFlow 2.06
Image-to Black & White	Sentinel Series 4.0
Image-to Color	SeaEarth for Windows 1.0
Instant CryCharting	Super PC-Kwik 4.12
Jetform	Whisker Professional 1.06
AS Letter 123	Win Games II 1.8
M.Y.O.B.	Windows Tools 1.1
Map Viewer	Wingman 1.0
Math Type	WinVoice 1.02
AS MS Online	WinWay Restore for Windows 1.0.M03
AS Pediatr 4.0	
PerformPro	
Pictures Etc	
AS Picture Publisher 3.0	
Plan for Windows	
Pub Tech File Organizer	
AS Q & E	
Scrapbook+	
Screenworks	
SQL Windows 2/3	
AS Superbase 4	
TaxPro	
Thinix L1	
Tiffany Plus	
AS Turbo Tax	
Update 1.0	
Wang Graphics	
Wang Upward	
AS WinProj	
AS Zsoft Publisher's Paintbrush	

HIGHLY
CONFIDENTIAL

MS7023408
CONFIDENTIAL

MS-PCA 1113902
CONFIDENTIAL

Windows 3.1 Application Compatibility

2. Applications that work - minor problems

Tested In Home

AS 3-D Charts to Go

AS ABC Flow Chart

AS Adobe Type Manager 1.1

AS Adobe Type Manager 1.15

AS Adobe Type Manager 2.0

AS Aldus Pagemaker

AS AMI Pro 2.0

AS ArtMaster

AS Arts & Letters 3.11 (*)

AS Backup 7.1

AS CA Compute

AS Charisma

AS Collage Plus

AS CorelDraw 2.0

AS CrossTalk 1.2

AS Crystal Accounting

AS Designer 3.1

AS Exam 3.0a

AS Faxit 2.15 (*)

AS Fields 2.0

AS Forms & Trees 2.0a (*)

AS Freelance 3.0

AS Freelance

AS Harvard Graphics for Win

AS HDC First Apps

AS HDC Icon Designer

AS Hollywood 2.0

AS HP Intelligent Intermission

AS JustWrite 1.0

AS Lotus Notes 3.0

AS Lotus Notes 2.1

AS MacInText

AS MacroMindAction

AS Mathematics

AS Menus for Windows

AS MS Bookshelf

AS MS Mail

AS MS Money

AS MS Publisher

AS MS Works for Windows

AS NBI Legacy 2.0

AS Norton Desktop for Windows

AS ObjectVision 2.0

AS OnTarget 1.0a

AS OnTime 1.1 (*)

AS Persession

AS PFB Window Works

AS Pixa 2.3

AS PowerPoint

AS Pro Write Plus

AS Publishers Powerpak

AS Quest

AS Quick C for Windows

Tested by ISV's

AS Top Priority 1.0

AS 3D Graphics Tools 1.01 R3

AS AmFile 1.1 (*)

AS Acropolis Accounting 1.0

AS Active Life 1.1

AS ADtype for Windows 2 Beta

AS Almannac for Windows 1.51

AS Amine Acid Database 3.0

AS Amish Utility 1.5

AS ANDMax 2.6

AS Annelof's Dream of Ancient Egypt 2.0

AS Brunsell 1.0a

AS Bus Probe 1.1

AS Chess Window 1.0

AS Click Art 3.3

AS Colorlab for RemmyScan Scanner 1.0

AS Colorlab for Epson ES300c Scanner 1.0

AS Colorlab for Sharp JX300 Scanner 2.2.0

AS Computer Quest 1.0

AS DataLink

AS Envision

AS ERmine/EXX Ltd

AS F/X Text Search 1.0

AS File F/X Utilities 1.0

AS Frame Maker

AS GC Equations 1.0a

AS Grammatik Windows 3.0

AS Harvard Draw 1.01

AS HDC First Apps 1.0a

AS HDC Icon Designer 2.0

AS IconDraw Plus 1.1.0

AS Induction for FBI 1.0

AS KEA term 420 0.9 Beta

AS Magic Center 1.0

AS Magic Fields 1.0

AS McMedia 1.0

AS Meta F/X File Manager 3.1a

AS Meta File F/X 3.0

AS Meta Task Manager 2.6.13

AS Picture Wizard 1.61

AS Plannett 2.0

AS Right Out 1.0

AS Sky for Windows 3.1

AS ScanDisk/V 1.1a

AS SPC-PC IV 1.0

AS Street Atlas USA 1.0

AS Streetwise Maps 4.0

AS System Architect 1.0

AS Ventura Publisher 4.0

AS Victim 1.0a

AS Vital Signs: the good health resource 1.0

AS Windows Link 3.0

AS Wordfit 1.01

HIGHLY
CONFIDENTIAL

MS7023409
CONFIDENTIAL

MS-PCA 1113903
CONFIDENTIAL

Windows 3.1 Application Compatibility

- AS Quattro 1.01
- AS Superbase 4
- AS Toolbook
- AS Turbo Pascal for Windows
- AS Ventura Publisher 4.0
- AS Visual Basic
- AS WEP 1/2/3
 - Wide Angle for Windows
 - Window Base
 - Wings
- AS WordPerfect 1.1a, 2.0
- AS WordPerfect for Windows
- AS WordStar for Windows

- (*) Updated for 3.1 - previous version broken

4. Applications that are Broken or have major functional problems

Tested in House

- AcadFile 1.0 (IFV says 1.1 okay)
- Adobe Illustrator
- Adobe TypeAlign
- After Dark 2.0 Beta
- Advertiser Plus for Windows
- Apexis
- Arts & Letters 3.1 (Fixed by 3.11)
- CheckIt 3.0
- Font 1.33 and 2.0d (Fixed by 2.15)
- Font and Text 2.0a (Fixed in 2.0a*)
- hDC MenuView 1.0
- Hollywood 1.0
- IBM PC3270 for Windows
- IronDell
- Launch (Shareware?) *updated*
- Lexis 2000 v 1.7 (Windows)
- Meriv Beacon Touches Typing (Windows)
- Microsoft Productivity Pak 1.0
- Optima 1.0 (Fixed by 1.1)
- PowerBuilder 1.0
- ServView 1.0
- Usher 1.4a (Shareware)
- Wingit (Shareware?)
- WinSketch
- Wind for Sound
- Xvision 4.0

Tested by ISV's

- Fluorescence Database
- GenMinder
- DeSeries
- Sanction Catalog
- BookerTools V3.0
- NewWave

HIGHLY
CONFIDENTIAL

Bit	Symcode	Meaning	App	Notified	Bug #	Win Int Line
1	GACF_IGNORENODISCARD	clear NODISCARD bit on GlobalAlloc	Publisher Money Works		8708 8707	notshel=1 notshel=1 notshel=1
2	GACF_FORCETEXTBAND	Separate text band from graphics band	WP-Win Freelance	Yes Yes	7004 9798	WPWINFIL=8 rem=0x2
4	GACF_ONELANDGRXBAND	One graphics band only	WP-Win	Yes	7004	WPWINFIL=8
8	GACF_IGNORETOPMOST	Ignore topmost windows for GetWindow(HWND,GW_HWNDFIRST)	ccmail Visual Basic		9034 12050	ccmail=8 vb=512
10	GACF_CALLTTDEVICE	Set DEVICE_FONTTYPE bit in FontType	AmiPro WP-Win		10260 11524	Amipro=16 win2wrs=528
20	GACF_MULTIPLEBANDS	Break graphics output into more than one band	Freelance PageMaker	Yes Yes	10573	Rem=0x0022
40	GACF_ALWAYSSENDNCPA	SetWindowPos() sends WM_NCPAINT to all children	Pulse Cricklet Presents	Yes	4490 9103	pulse=0x0040 cp=0x0040
80	GACF_EDITSETTEXTMUNG	Strings passed to Edit Controls forced upper case	JustWrite	Yes	8839	JW=0x0080
100	GACF_MOREEXTRAWINDOW	Add 4 extra bytes in window and class instance structures	Compton's MM Ency. Aporia		10611 13481	TME=0x0100 sporia=0x0100
200	GACF_TTIGNORERASTER	Don't enumerate dup bitmap fonts for TT fonts	WP-Win VB	Yes	11524 12050	Win2wrs=528 vb=512
400	GACF_HACKWINFLAGS	Don't set WF_PAGING bit in return to GetWinFlags()	Toolbook Freelance Freshart	Yes		TBOOK=0x400 TBOOK=0x400 TBOOK=0x400
800	GACF_DELAYWHWINDSHAK	Don't check hardware handling on SetCommState()	Packrat		11593	packrat=2048
1000	GACF_ENUMHELVTAGRM	Enumerates TrueType and Helv	Spinner + Milestone, etc. Guide WordPerfect	Yes	12965 14421 14013	plus=0x01000 milesv3=0x1000 guide=0x1000 win2wrs=0x1210
2000	GACF_ENUMTTNOTDEVIC	Turn off DEVICE_FONTTYPE	PageMaker 4.0 Designer 3.1 Accord 3.1 MGXDraw 3.0 AccPack Charisma Persuasion JustWrite	Yes	5054 11054 4102 5518 4941 13740 4927	pm4=0x2000 designer=0x2000 planner=0x2000 draw=0x2000 winsam=0x2000 charisma=0x2000 p2=0x2000 jw=0x2080
4000	GACF_SUBTRACTCLIPSBS	Affects the way window invalidation works for non-ws_clipstfngs	Lotus Notes 2.0 & 1		7114	_BNOTES=0x400
8000	GACF_FORCETTGRAPHICS		Freelance	Yes	13332	rem=0x8022
10000	GACF_NOHRGN1	Blows off hrgn(1) optimization in validation layer, fixing repaint problems	Powerpoint MSDraw		8235 10380	PP=0x00010000 ED=0x00010000
20000			Lotus Notes		14612	_BNOTES=0x240

HIGHLY
CONFIDENTIAL

MS7023411
CONFIDENTIAL

MS-PCA 1113905
CONFIDENTIAL

Windows 3.1
February 27, 1992



D. Beta program

**HIGHLY
CONFIDENTIAL**

**MS7021412
CONFIDENTIAL**

**MS-PCA 1113906
CONFIDENTIAL**

Bela Program - as of 2/20/92

	Number of Sites		Incoming Problem Reports		Problem Reports Transferred to Winbug		Activity Level of Beta Sites	
	Retail	DDK	CIS FAX/Other	Total	Total	%	Retail MSD Disks Total	Reported Problems Submitted
Domestic	8000	5463	2028	3852	1180	31%	5980	<= 1 Prob 30%
Intl	5000	2276	796	200	43	22%	2120	> 1 Prob 1%
MS Internal			1035	1035	567	55%		
Total	13600	7729	2825	2017	1800	35%	8100	24%

Note: The International numbers are very low because the Beta screen of problems before sending to Recidnet

Incoming Problem Reports Since the Final Beta

Week End	In New	Bug'd	%
27-Dec	77	45	58%
3-Jan	185	117	63%
10-Jan	864	357	37%
17-Jan	837	432	52%
24-Jan	716	208	29%
31-Jan	682	183	28%
7-Feb	475	120	25%
14-Feb	796	227	29%
21-Feb	312	76	24%

< - - Shipped FB
< - - Shipped 68
< - - Shipped RC1
< - - Not a full week of data here

Incoming Problem Reports: Before and After RC1

Build	Sev 1	Pr 1	Bug'd
61-71	7%	9%	36%
RC1-RC2	3%	5%	30%

~ about 1000 sites will get RC3, another 500 will download from Compuserve.

HIGHLY CONFIDENTIAL

MS7023413 CONFIDENTIAL

\\pyrex\user\andyhl\winbeta\dat\tdcd.xls

MS-PCA 1113907 CONFIDENTIAL

Windows 3.1
February 27, 1992



E. New user tests and results

HIGHLY
CONFIDENTIAL

MS7023414
CONFIDENTIAL

MS-PCA 1113908)
CONFIDENTIAL)

**Floppy Installation Results
Windows 3.1 (RC 2)**

The beta test team performed floppy installations on various systems in buildings 8, 9, 16 and 21 over the past week. Below are the results of these tests:

Test Results Summary

Success setup	71	81%
Failed setup	7	9%
<hr/>		
Total attempts	78	100%

Of the successful setups, 11 total or 15% of the users encountered a problem when running Windows 3.1 or a minor problem during setup.

Failed Setups Breakdown

- 1 Due to memory parity error. Problem isolated to faulty memory board. (HW)
- 5 Setup hung with After Dark MS-DOS screen saver TSR loaded. (FIXED)
- 1 "Video Initialization Failed" when trying to run enhanced mode. Std ok (INVESTIGATING)
| --- | | |
- 7 Total failures.

Problems Encountered Once Installed Breakdown

- 3 Default printer not maintained during upgrade (INVESTIGATING)
- 3 MSD hangs when printing report with Lanfax loaded (doc in KB article)
- 2 Network error when printing from WinMail w/ PScript and Lanman 2.0c (INVESTIGATING)
- 1 Out of disk space, file copy error in setup
- 1 Mouse settings "don't stick". (FIXED)
- 1 Dynacomm font changed (KNOWN PROBLEM IN DYNACOMM)
| --- | | |

11 Total Problems

**HIGHLY
CONFIDENTIAL**

**MS7023415
CONFIDENTIAL**

**MS-PCA 1113909
CONFIDENTIAL**

New beta tester data

New Beta Testers that received the final beta (build 61d)

61 total sites called

Setup
Success 90% (55)
Fail 10% (6)

Reason for Setup Failures:

1. Had DR DOS 5.0 Installed, works fine when MS-DOS used
2. Had DR DOS 6.0 Installed, works fine when MS-DOS is used
3. Bad Hard Disk, replaced hard disk all is fine.
4. Bad distribution disks
5. Had Award BIOS that had known probs w/ 3.0. Got updated BIOS, everything works now.
6. Problem w/ ballpnt mouse, worked after re-installing. This is a bug we fixed since final beta.

The % of failures due to bugs in Win 3.1 is very low, but the overall failure is very troublesome from the support point of view.

New Beta Testers that received RC1:

Total sites called 34:

Setup:
Success/Minor Probs 90%
Major Probs 10%

Apps
All/Most Work 70%
Some/None Work 30%

*Note: some sites are reporting that they will always run some of their MS-DOS apps from DOS because they run faster.

Printing
Success/Minor Probs 90%
Major Probs 10%

Use as everyday environment
100%/Most of the time 80%
Rarely or half of the time 20%

How often do you have to re-boot Windows or the System
Never or Rarely 60%
Sometimes or Frequently 40%

** Getting the details here is obviously a very high priority.

HIGHLY
CONFIDENTIAL

MS7023416
CONFIDENTIAL

MS-PCA 1113910
CONFIDENTIAL

Windows 3.1
February 27, 1992



F. Device Support Status

**HIGHLY
CONFIDENTIAL**

**MS7023417
CONFIDENTIAL**

**MS-PCA 1113911
CONFIDENTIAL**

Device Driver Support Summary

Networks

12 networks are supported in Setup, we ship drivers for 4. Overall network status is good. We still need to sign the license with Novell that allows us to ship the netware upgrade components in the Windows box. (winnet drivers, new shell, and ipx update.) The one open issue we have is whether we list NetWare Lite in setup or not, this depends on our testing results which are in progress now.

Displays

All display drivers, both internal and external are in good shape. 3rd party display drivers that cache fonts will need to update as they didn't cache TT fonts correctly. We are working directly with all of them (ATI Ultra, DGIS, Appian, S3) to make this happen by the time we ship.

Printers

All printer drivers (with the possible exception of the PCL 5 driver from HP) are in good shape now. The PCL 5 driver has outstanding bugs against TurboTax and Freehand, but all the HP developers are out this week. There are 268 models supported in the Win 3.1. IPG will ship an additional disk full of drivers with the A product.

Audio

Drivers here are stable, we are shipping the same set that shipped with MM 1.0; SoundBlaster, Adlib, and Roland.

Windows Driver Library (WDL)

Targetting to ship an additional 10 audio drivers, 16 display, and 85 printers on the initial WDL. The Access Pack is also targeted for the initial WDL as is MSCDEX.EXE 2.21.

**HIGHLY
CONFIDENTIAL**

**MS7023418
CONFIDENTIAL**

**MS-PCA 1113912
CONFIDENTIAL**

Network Driver Status

(Please note that most of these drivers are accompanied by some auxilliary files, such as helpfiles, popup utilities and dynamic link libraries.)

Drivers in our box

DRC PATWORKS
No active bugs.

Microsoft LAN Manager 2.x
Numerous problems but not serious.

Microsoft Network and 100% compatible.
No active bugs.

Novell NetWare
No known must-fix bugs. The risk is that Novell may decide to fix bugs after this point, and the state of the license agreement may make us accept them.

Their plans are to release this in their separate NetWare for Windows kit when we release.

There are several known crashing bugs in the NetWare client software which Novell will not fix for this release; all would occur under Win30 as well Win31. The only 100% reproducible is caused by sending a popup message to yourself, the others are all timing related.

Many users will have to manually upgrade their NetWare client components in order to run with Windows 3.1, because the upgraded NetWare components for Windows require updated MS-DOS components. We are providing a tool in the Resource Kit to help automate the process of rebuilding these components, but the actual effort of upgrading each workstation will remain.

Drivers not in our box but handled by Setup

3Com 3+Share and 3+Open LAN Manager
These are correctly handled by Setup.

These are supported as Microsoft Network or Microsoft LAN Manager, respectively. The only major complaint from customers is that we don't support their 3Part naming convention. Since they are out of the software business there will never be any change in their

HIGHLY
CONFIDENTIAL

MS7023419
CONFIDENTIAL

MS-PCA 1113913
CONFIDENTIAL

situation.

Artisoft LANtastic for Windows

These are correctly handled by Setup.

LANtastic for Windows is sold as an add-on product for the normal LANtastic network.

The L4W installation program does not run under Win31 because it was using undocumented, internal-only behavior of Windows 3.0. A fixed version of WINSTALL.EXE is already available to customers.

Banyan VINES

These are correctly handled by Setup.

Users running VINES versions 4.10 or higher but below 4.11(5) will require an updated version of VINES.DRV in order to print or browse network printer queues, or to see print job status.

We intend to include this driver in the WDL, and Banyan will also make it available in the form of a server or patch.

Known hanging bugs in other, non-Windows components which are also fixed in 4.11(5). One serious problem is that Lotus Notes cannot be run reliably over Banyan, due to a problem in the Banyan OS/2 drivers.

Two sites are having problems saving files to a network from WinWord, but neither Banyan nor MS has been able to reproduce the problem.

Despite the many known problems, most beta sites seem to be happy.

HP LAN Manager

This is correctly handled by Setup, but not displayed with the specific name.

This product is closely related to 3Com's 3+Open LAN Manager. We have not tested this product.

IBM PCLP and LAN Server

These are correctly handled by Setup.

PCLP is no longer an active product, but Windows works acceptably with existing versions by treating them as Microsoft Network.

LAN Server versions below 2.0 are supported as Microsoft Network or Microsoft LAN Manager.

LAN Server 2.0 (which ships only as part of OS/2 2.0) also includes a Windows network driver. This is automatically installed on the user's system and is available when Windows is installed.

HIGHLY
CONFIDENTIAL

MS7023420
CONFIDENTIAL

MS-PCA 1113914
CONFIDENTIAL

Windows 3.1 Setup detects and handles all these configurations properly.

Microsoft LAN Manager 2.1

This is correctly handled by Windows Setup.

Many users hate the user interface in the shipping LM21 drivers. LM21a will include an updated driver that corrects the major complaints.

Many known problems but none considered serious.

TCS 10Net

This is correctly handled by Windows Setup.

They sell 10Windows as an add-on to their basic LANtastic network. There are a few known bugs with their current versions and Win31, including one crashing when disconnecting a network printer which was just reported.

In addition, their setup program does not correctly install 10Windows, requiring the user to adjust their system.ini file by hand.

They will be releasing an updated version of 10Windows approximately the same time as Windows 3.1.

Usgermann-Bass Net/One

This is correctly handled by Setup, but not displayed with the specific name.

They normally use the MSNET or LANMAN drivers for their networks, but they also produce additional software to support their TCP/IP stack under Windows. This is included along with their TPC/IP package.

Drivers not handled directly by setup

AIST StarLas

This is not recognized by Windows Setup.

We have not tested this product.

Invisible Software Invisible Net/30 for Windows

This is not recognized by Windows Setup.

Invisible Software positions its Net/30 for Windows product as totally optimized for Windows, and limited testing shows it to be pretty

HIGHLY
CONFIDENTIAL

MS7023421
CONFIDENTIAL

MS-PCA 1113915
CONFIDENTIAL

successful. Their product can be installed on top of Windows, or you can install it without Windows and later use their OEMSETUP.INF to properly configure Windows. This product has been tested but not to a great degree.

MainLan MainLan for Windows

This is not recognized by Windows Setup.

MainLan is a low-end peer-to-peer network which contains Windows network drivers and networking applications. We have not tested this product.

GrapeVine LAN Products' GrapeVine

This is not recognized by Windows Setup.

This low-end peer-to-peer network does not include Windows-specific code at this time. We have not tested this product.

Hayes LANstep

This is not recognized by Windows Setup.

Formerly known as Waterloo PORT. It has some problems working with Windows when run as a non-dedicated server. They intend to fix these and include a Windows network driver in a future release. We have not tested this product.

Novell NetWare Lite

This is not recognized by Windows Setup.

According to Novell, this product seems to work with Windows using either the Microsoft Network or No Network settings. It is not officially supported by Microsoft, nor is it documented in the retail box.

**** We are currently testing this now at the request of steveb ****
**** to see if it works good enough with the MS-Net driver to ****
**** list in setup. ****

Sitka TOPS

This is not recognized by Windows Setup.

TOPS does not yet work well with Windows. Sitka has released lots of application notes on how to work around known problems, but the end result is still not very compatible. They have been working on this problem for a long time, including several staff changes, with little visible success.

Sas PC-NFS

This is not recognized by Windows Setup.

HIGHLY
CONFIDENTIAL

MS7023422
CONFIDENTIAL

MS-PCA 1113916
CONFIDENTIAL

Sun PC-NFS 3.5 was released last August and worked reasonably well with Win30, but not entirely. There were known caveats, including the fact that NFS applications would not work under enhanced mode.

Then they came out with their PC-NFS Toolkit 2.0 which lets people write non-Windows NFS apps which work under enhanced mode, but not Windows apps.

About the time we ship Win31 they will release PC-NFS 4.0 which is supposed to be fully Win3x compatible. These fixes are not available except with a full network upgrade.

And then shortly following that they will upgrade their toolkit to support NFS-specific Windows applications.

They have found a few problems with Win31 but none serious. We do not test with this product.

HIGHLY
CONFIDENTIAL

MS7023423
CONFIDENTIAL

MS-PCA 1113917
CONFIDENTIAL

Windows 3.1 Printer Driver Plan (2/1/91) (** indicates the driver is provided by a third-party)
 Win 3.1 name Models Supported (a model is bold implies it is new for 3.1)

Transferred to Universal Driver Model:

1. fujiwrt.drv	1. fuji9.drv(4)	Fujitsu DX 2100,2200,2300,2400
2. fuji24.drv(3)	2. fuji24.drv(3)	Fujitsu DL 2400,2600,3300,3400,3600
3. nec24ps.drv(9)	3. nec24ps.drv(9)	NEC Pinwriter CP6,CP7,PSXL,P9XL,P4,P7,P200,P300,P300
4. epson24.drv(14)	4. epson24.drv(14)	Epson L-750,L-1000,LQ-300,LQ-510,LQ-800,LQ-850,LQ-950,LQ-1000,LQ-1050, LQ-1500,LQ-2500,LQ-2550,SQ-3000,SQ-2500
5. epson9.drv	5. epson9.drv(29)	Epson EPX-5000, EX-800,EX-1000,FX-100,FX-100+,FX-185,FX-286,FX-30, FX-80+,FX-85,FX-86,FX-286,FX-250,FX-1050,FX-80,LX-80,LX-96,LX-800, LX-110,MGL-80,LX-10 P/T,LX-100,EX-80,EX-80P/T,EX-80P/T+-EX-100, EX-100+,T-750,T-1000
6. proprint.drv	6. proprint.drv(4)	IBM ProPrinter XC4,XC4+,XC3,XC3+
7. deskjet.drv	7. proprint.drv(8)	IBM ProPrinter II, III, XL, XL II, XL III
8. thinkjet.drv	8. thinkjet.drv(3)	HP DeskJet, DeskJet Plus, DeskJet 500
9. thinkjet.drv	9. thinkjet.drv(1)	HP ThinkJet
10. oki24.drv	10. oki24.drv(9)	Olivetti ML-380,390,390Plus,391,391Plus,393,393Plus,393C,393CPlus
11. oki9.drv	11. oki9.drv(6)	Olivetti ML-192,192Plus,193,193Plus,193J21
12. oki9.drv	12. oki9.drv(7)	AT&T 473/478,IBM Oriprint,Olivetti 91793-IBM,Olivetti ML-193-IBM, Olivetti ML-193-IBM,Olivetti ML-220-IBM,Olivetti ML-221-IBM
13. hpjet.drv	13. hpjet.drv(3)	C-jetk 8510,AT&T 470/475
14. hpjet.drv	14. hpjet.drv(30)	AGFA CompuGrapher Geniva,Agriplot Laser,Epson EPL-6000, Epson EPL-7000, Epson OQ-1500, HP LaserJet I, Plus,500+,2000,Server II, IID, IIP, IIP Plus, Kyocera F-Series(USA),Kyocera F-5000(USA),NEC Silentwriter LC860Plus, Olivetti LaserLine 6, Olivetti OL-600, Olivetti OL-900, Olivetti ETV-5000,Olivetti PG-106,Olivetti PG-208 MGL,Olivetti PG308 HS, Panasonic ICX-P4428, QuietWriter I, Tandy LP-1000,Tandy Gamma, Toshiba PageLaser 12,Wang LDP6,Unisys AP9210
15. pantjet.drv	15. pantjet.drv(2)	HP PaintJet, HP PaintJet XL
16. qmsi.drv	16. qmsi.drv(1)	IBM QuietWriter III
17. ti830.drv	17. ti830.drv(2)	TI 830/833
18. toshiba.drv	18. toshiba.drv(2)	Toshiba P351/1351

Not Planned to Move To Universal Driver Model For Windows 3.1:

18. canon419.drv	19. canon419.drv(1)	IBM Laser Printer 4019
19. canon2.drv	moved to "A" version	Olivetti DM 100/4, Olivetti DM 105
20. canon2.drv	moved to "A" version	Olivetti DM 280/282/290/291, Olivetti DM 400
21. canon2.drv	moved to "A" version	Olivetti DM 600
22. hpjet.drv	20. hpjet.drv(4)	Olivetti TH 7605/Hermes 820
23. hpjet.drv	21. hpjet.drv(1)	HP LaserJet III, IIIi, IIIx, IIIp
24. canon2.drv	22. canon2.drv(2)	Canon LBP-8 Series II models
25. canon2.drv	23. canon2.drv(1)	Canon LBP-8 Series III/LBP-8 models
26. canon2.drv	24. canon2.drv(1)	IBM Color Printer
27. canon2.drv	25. canon2.drv(16)	Genova / Tera Only
28. hpjet.drv	26. hpjet.drv(72)	AT&T 435,HP 7470A,HP7473A,HP 7550A,HP 7580A,HP 7580L,HP 7575A, HP 7580L,HP 7580L,HP ColorPro,HP ColorPro via GEL,HP DeskPro, HP DeskPro DXL, HP DeskPro EXL, HP DeskPrinter I, HP DeskPrinter II
29. canon2.drv	29. canon2.drv(1)	AGFA 8000 Series PE,AGFA CompuGrapher 400PS, Apple LaserWriter, IBM AT, INTC, Plus, AST TurboLaserPS, Datsun/Okidata L23,240 Digital Columns PS, Digital DECcolor 1160/2160/2200/2200,Digital L/NDR ScriptPrinter, Digital LPS PostScript 2860, Epson EPL-7000, Hermes H 604 PS (LS Series),Hermes H 604 PS (LS Series) HP LaserJet III PostScript,HP LaserJet HP PostScript,HP LaserJet III PostScript,HP LaserJet III PostScript,HP LaserJet HP PostScript, HP LaserJet III PostScript,IBM LaserPrinter 4019 PS17, IBM LaserPrinter 4019 PS39,IBM LaserPrinter 4029 PS17,IBM LaserPrinter 4029 PS39, IBM Personal PagePrinter,IBM Personal PagePrinter II-30, IBM Personal PagePrinter II-31, Linetronics 200/230/230/300/300,Mitrosat TrueLaser, NEC Columns PS 4070, NEC Silentwriter LCT90XL, NEC Silentwriter LC850, NEC Silentwriter 2 90, NEC Silentwriter 2 290, NEC Silentwriter 2 990, OneColor GS241 PS, OneColor GS242 PS, Old OLS 40/PS, Olivetti PG300, Olivetti PG308 PostScript, Olivetti PG306 PS (LS Series), Olivetti PG306 PS (LS Series), Panasonic ICX-P4455, QMS ColorScript 100, QMS-PS 800, QMS-PS 800 Plus, QMS-PS 810,QMS-PS 810, QMS-PS 1200, Softek ColorPoint PS Model 64, Softek ColorPoint PS Model 14, Tetramis Phaser II FX, Tetramis Phaser II FXL, Tetramis Phaser III FXL, TI microLaser PS17, TI microLaser PS34, Triumph Adler SDR 7706 PS13,Triumph Adler SDR 7706 PS34,Unisys AP9415, Vantony VT-600, Wang LCS15/FontPlus

Windows 3.0 SDL Drivers Added To Win 3.1

Transferred to Universal Driver Model:

canon10.drv	27. canon10.drv(1)	Canon Bubble-Jet BJ-100
canon130.drv	28. canon130.drv(1)	Canon Bubble-Jet BJ-130
ibm5204.drv	29. ibm5204.drv(1)	IBM QuietWriter 5204
dn309.drv	30. dn309.drv(2)	Olivetti DM 109/309

Not Planned to Move To Universal Driver Model For Windows 3.1:

New Drivers Added To Win 3.1

Using Universal Driver Model:

31. ps1.drv(1)	IBM PS1
32. panam9.drv(2)	Panasonic KC-P1100,KC-P1695
33. panam34.drv(3)	Panasonic KC-P1125, KC-P1124, KC-P1624
34. canonps.drv(1)	IBM EasyJet Printer
35. canon130.drv(2)	Canon Bubble-Jet BJ-300, BJ-330
36. canonps.drv(3)**	Chitson GSX-136, GSX-140, GSX-140+, GSX-145, PM40
37. canonps.drv(1)**	Chitson 126D,180D,200GX, 200GX/15, HSP-800, HSP-800
38. canonps.drv(1)	Dronis 150 Plus
39. canonps.drv(4)	Epson LQ-570, LQ-670, LQ-1070, LQ-1170

Not Planned to Move To Universal Driver Model For Windows 3.1:

40. canonps.drv(4)**	Olivetti PG 306, Triumph Adler SDR 7706, Hermes H 604
----------------------	---

268 total printer models supported (164 via the Universal Driver, 73 via the PostScript Driver)

HIGHLY CONFIDENTIAL

MS7023424
CONFIDENTIAL

MS-PCA 1113918
CONFIDENTIAL

Vendor-Provided Drivers Status:

Adobe PostScript Level 2 drivers (shipped with Level 2 printers):

1. *Enhanced Version of Our level 1 Driver:* Shipping since last fall, based on MS driver.
2. *Redesigned from Ground Up Version:* To be released at time of 3.1 ship. Will not have 3.1 features (TrueType Support, ResetDC functionality). This to be added in version due by summer, 1992.

Hewlett Packard DeskJet 500C (shipped with printer):

Some problems with TrueType. About a dozen sev 3 bugs and 2 severe crashing bugs related to specific app/hardware. New driver release slated to correct known problems to be available at 3.1 ship date.

Hewlett Packard Screen Color-Matching PaintJet Driver (shipped with printer): Few minor severity 3 type problems, we are aware of and have communicated to HP.

International Product Group Drivers Status:

Please see the attached list, "Additional models for "A" version and all localised versions". The "A" version is the non-U.S. English-Language version of Windows. This is the list of models that IPG will add to Windows 3.1 U.S. Version when they create the "A" version. These will be fully integrated in all localised versions: the list of models when the user hits the ADD button in the printer control panel will be the US models plus these models. In a couple of cases, IPG has removed corresponding US models (Canon lasers and Oki/Okidata) and replace them with improved drivers for the European marketplace. In the "A" version, we will use the oemsetup.inf mechanism because we cannot modify the control.inf and our drivers will be included on an additional disk.

The hand-off date for the above drivers is 28 February and IPG is doing a final pass of testing now on them. The hand-off for the "A" version is being done via Marcello Savoca.

IPG's focus has been on the drivers that ship in the retail package, so they will not have drivers developed explicitly for the WDL at the time of 3.1 ship.

**HIGHLY
CONFIDENTIAL**

**MS7023425
CONFIDENTIAL**

**MS-PCA 1113919
CONFIDENTIAL**